

Sample Information

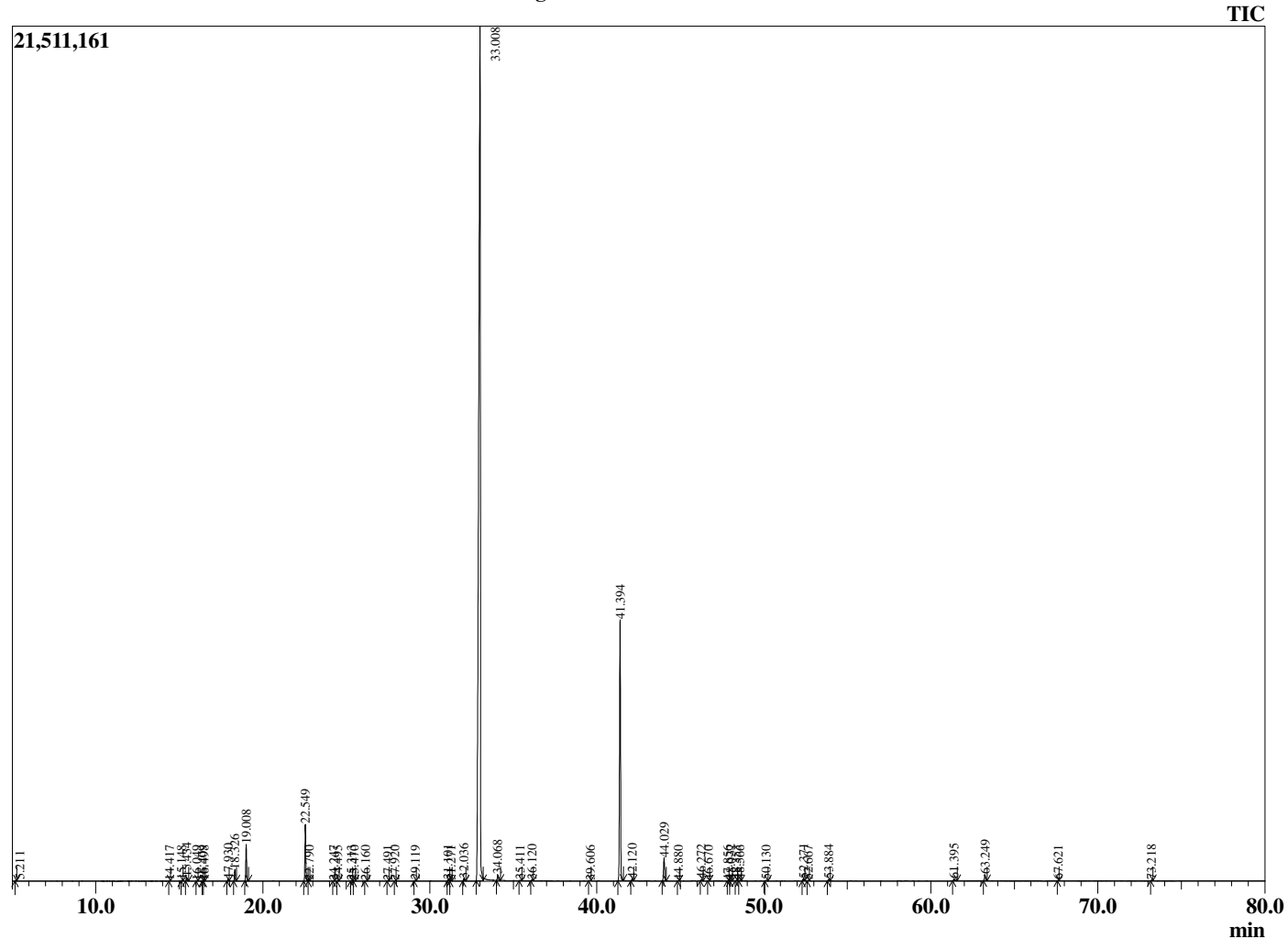
Analyzed by : Dr. Robert S. Pappas  
 Analyzed : 3/6/2021 5:51:20 PM  
 Sample Type : Essential Oil  
 Sample Name : Palmarosa - Edens Garden  
 Sample ID : BB22AS  
 Injection Volume : 0.10  
 Instrument ID : GC-4



Peak Report TIC

R.Time	Name	Area%
4.073	3-Methylbutanal	0.01
4.181	2-Methylbutanal	0.00
5.211	1-Pentanol	0.02
14.417	Unidentified	0.01
15.148	6-Methyl hept-5-en-2-one	0.03
15.434	Myrcene	0.18
16.049	Unidentified	0.02
16.409	Unidentified	0.01
16.498	alpha-Phellandrene	0.01
17.930	Limonene	0.09
18.326	(Z)-beta-Ocimene	0.50
19.008	(E)-beta-Ocimene	1.63
22.549	Linalool	2.66
22.790	Unidentified	0.01
24.247	cis-para-Menth-2-en-1-ol	0.02
24.495	allo-Ocimene	0.03
25.313	Unidentified	0.01
25.470	trans-para-Menth-2-en-1-ol	0.02
26.160	Citronellal	0.02
27.491	para-Mentha-1,5-dien-8-ol	0.01
27.920	Menthol	0.01
29.119	alpha-Terpineol	0.03
31.101	Nerol	0.06
31.271	Citronellol	0.02
32.036	Neral	0.12
33.008	Geraniol	77.86
34.068	Geranial	0.30
35.411	Unidentified	0.03
36.120	Geranyl formate	0.06
39.606	Eugenol	0.01
41.394	Geranyl acetate	13.85
42.120	beta-Elemene	0.07
44.029	trans-beta-Caryophyllene	1.31
44.880	trans-alpha-Bergamotene	0.01
46.272	alpha-Humulene	0.07
46.670	Unidentified	0.01
47.856	Germacrene D	0.01
48.032	alpha-Selinene	0.04
48.353	beta-Selinene	0.02
48.566	Valencene	0.02
50.130	delta-Cadinene	0.05
52.371	Geranyl butyrate	0.12
52.667	(E)-Nerolidol	0.03
53.884	Caryophyllene oxide	0.08
61.395	(2E,6E)-Farnesol	0.13
63.249	Geranyl hexanoate	0.34
67.621	Farnesyl acetate	0.01
73.218	Unidentified	0.04
		100.00

Chromatogram Palmarosa - Edens Garden



Comments:

The analysis of this Palmarosa batch sample meets the expected chemical profile for authentic essential oil of *Cymbopogon martinii*. No contamination or adulteration was detected. The results provided in this GCMS quality analysis reflect the chemical composition of the oil and lot referenced above on the date of analysis.