

Sample Information

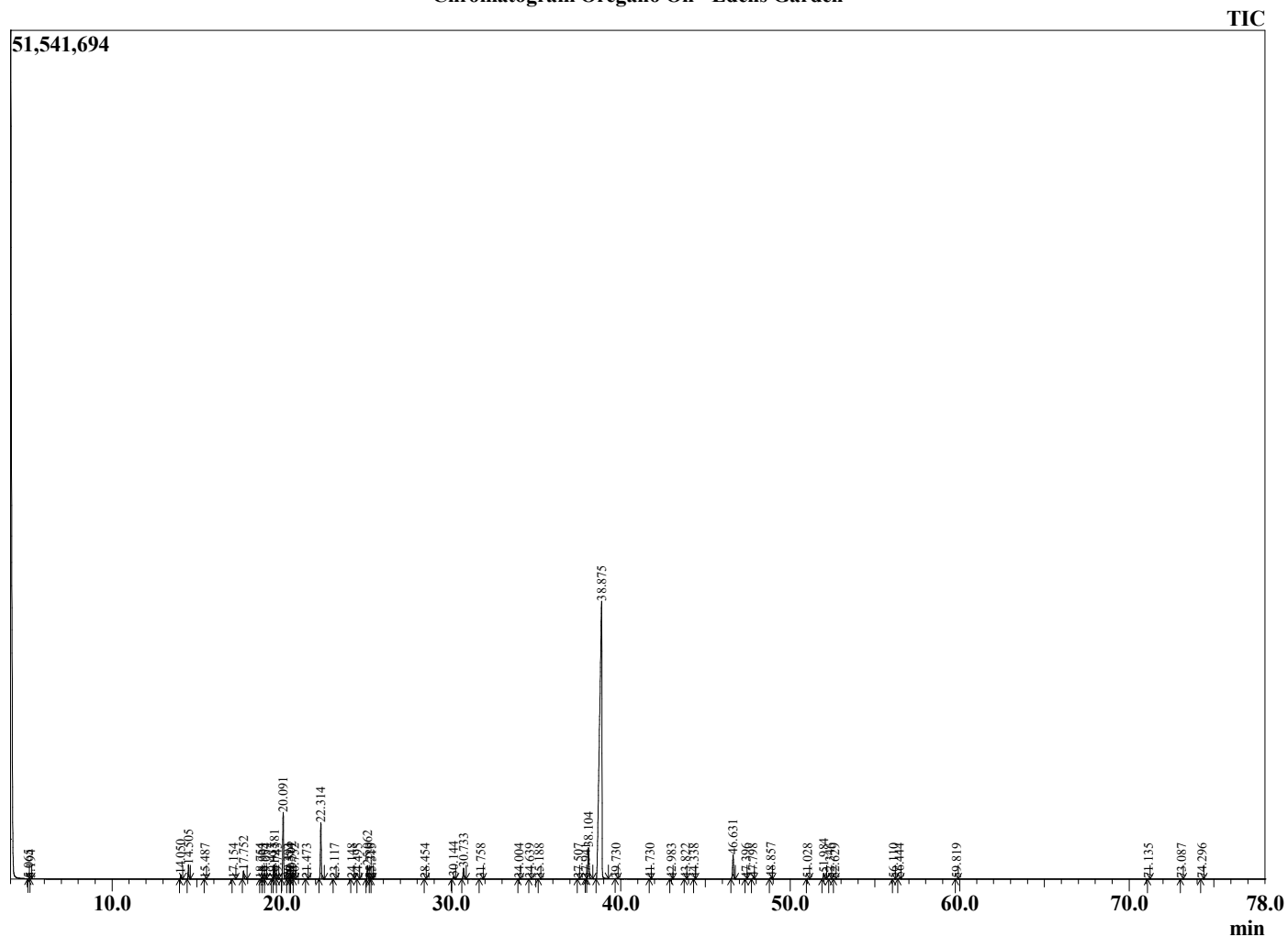
Analyzed by : Dr. Robert S. Pappas
 Analyzed : 7/29/2022 1:14:41 AM
 Sample Type : Essential Oil
 Sample Name : Oregano Oil - Edens Garden
 Sample ID : EG Lot #BB12GAQ
 Injection Volume : 0.10
 Instrument ID: : GC-2



Peak Report TIC

R.Time	Name	Area%
5.065	3-Methylbutanal	0.01
5.194	2-Methylbutanal	0.01
14.050	alpha-Thujene	0.37
14.505	alpha-Pinene	1.19
15.487	Camphene	0.05
17.154	beta-Pinene	0.05
17.752	Myrcene	0.75
18.754	Pseudolimonene	0.02
18.903	alpha-Phellandrene	0.05
19.054	delta-3-Carene	0.02
19.435	1,4-Cineole	0.01
19.581	alpha-Terpinene	1.37
19.743	meta-Cymene	0.02
20.091	para-Cymene	6.50
20.393	Limonene	0.08
20.514	beta-Phellandrene	0.04
20.592	1,8-Cineole	0.26
20.752	ortho-Cymene	0.02
21.473	(E)-beta-Ocimenme	0.02
22.314	gamma-Terpinene	5.50
23.117	trans-Sabinene hydrate	0.04
24.148	Terpinolene	0.06
24.495	para-Cymenene	0.02
25.062	Linalool	1.35
25.220	Unidentified	0.04
25.315	Unidentified	0.02
28.454	Camphor	0.01
30.144	Borneol	0.25
30.733	Terpinen-4-ol	1.25
31.758	alpha-Terpineol	0.09
34.004	Methyl thymol ether	0.06
34.639	Carvacryl methyl ether	0.03
35.188	Carvone	0.03
37.507	Unidentified	0.01
37.941	(E)-Anethole	0.01
38.104	Thymol	3.97
38.875	Carvacrol	72.24
39.730	Unidentified	0.05
41.730	Thymol acetate	0.01
42.983	Carvacryl acetate	0.05
43.822	Copaene	0.02
44.338	Unidentified	0.01
46.631	trans-beta-Caryophyllene	2.75
47.396	trans-alpha-Bergamotene	0.02
47.798	beta-Copaene	0.07
48.857	alpha-Humulene	0.18
51.028	Viridiflorene	0.05
51.984	beta-Bisabolene	0.63
52.346	gamma-Cadinene	0.04
52.629	delta-Cadinene	0.03
56.110	Spathulenol	0.04
56.444	Caryophyllene oxide	0.10
59.819	tau-Cadinol	0.04
71.135	Unidentified	0.01
73.087	Unidentified	0.04
74.296	Unidentified	0.06
		100.00

Chromatogram Oregano Oil - Edens Garden



Comments:

The analysis of this Oregano Oil batch sample meets the expected chemical profile for authentic essential oil of Origanum vulgare.

No contamination or adulteration was detected. The results provided in this GCMS quality analysis reflect the chemical composition of the oil and lot referenced above on the date of analysis.