

Sample Information

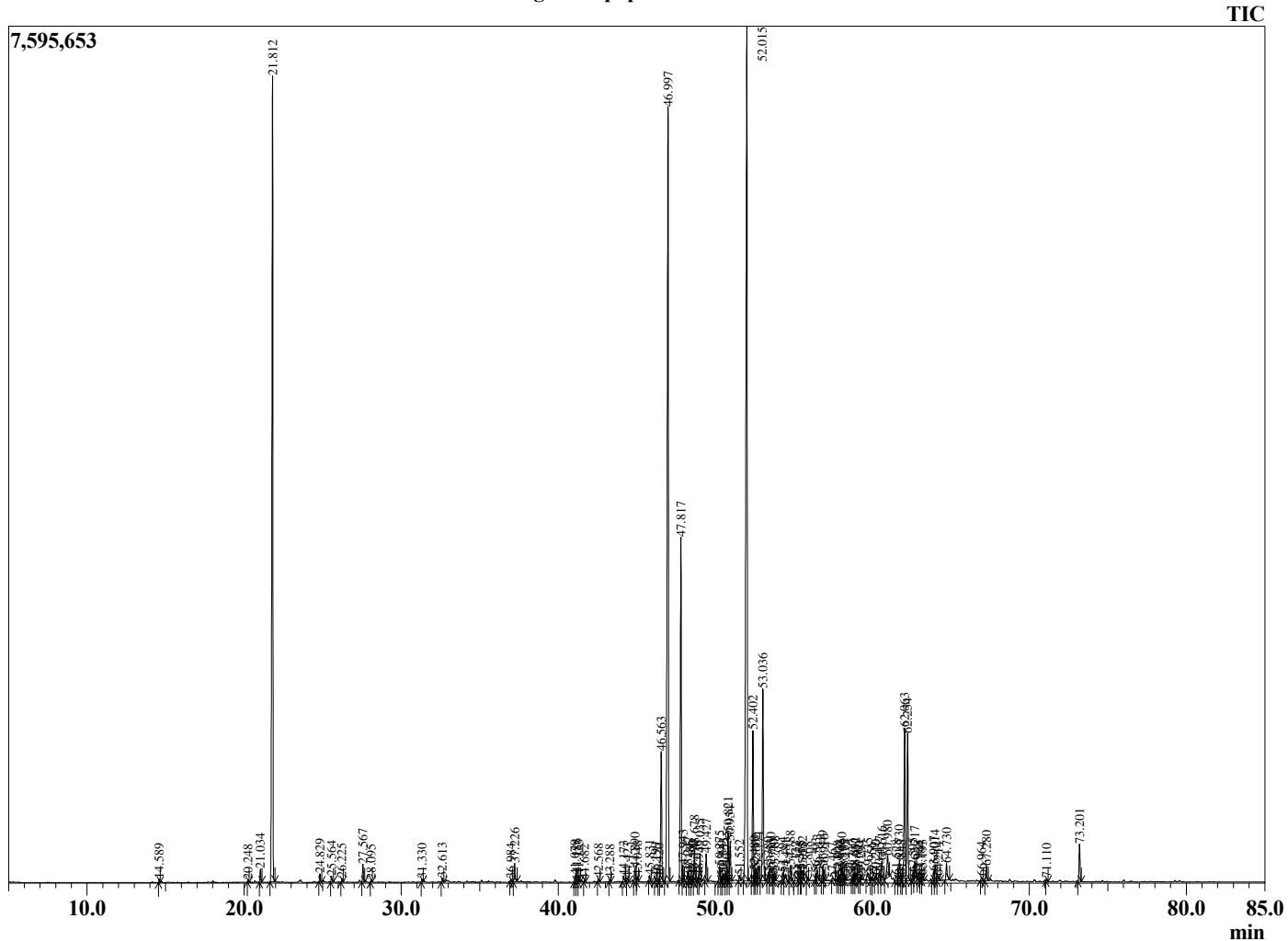
Analyzed by : Dr. Robert S. Pappas
 Analyzed : 3/7/2021 12:00:46 AM
 Sample Type : Essential Oil
 Sample Name : Opoponax - Edens Garden
 Sample ID : BA29IAL
 Injection Volume : 0.10
 Instrument ID : GC-2



Peak Report TIC

R.Time	Name	Area%
14.589	2,7-Dimethyloxepine	0.05
20.248	Unidentified	0.04
21.034	(Z)-beta-Ocimene	0.23
21.812	(E)-beta-Ocimene	16.61
24.829	Rosefuran	0.13
25.564	Unidentified	0.12
26.225	Unidentified	0.06
27.567	4-Acetyl-1-methylcyclohexene	0.31
28.095	Unidentified	0.04
31.330	4'-Methyl acetophenone	0.05
32.613	Unidentified	0.07
36.984	Unidentified	0.05
37.226	Decanol	0.37
41.079	Unidentified	0.13
41.186	Unidentified	0.16
41.323	Unidentified	0.13
41.682	Unidentified	0.04
42.568	alpha-Longipinene	0.07
43.288	Unidentified	0.05
44.173	Longicyclene	0.13
44.423	Unidentified	0.08
44.890	7-epi-Sesquithujene	0.26
45.048	beta-Elemene	0.09
45.831	Sesquithujene isomer	0.12
46.199	Unidentified	0.08
46.420	Unidentified	0.06
46.563	cis-alpha-Bergamotene	2.78
46.997	alpha-Santalene	18.93
47.817	trans-alpha-Bergamotene	6.97
47.943	Unidentified	0.30
48.247	(Z)-beta-Farnesene	0.19
48.385	Unidentified	0.11
48.590	Unidentified	0.12
48.678	epi-beta-Santalene	0.62
48.935	Unidentified	0.08
49.035	(E)-beta-Farnesene	0.54
49.427	beta-Santalene	0.53
50.275	1-Dodecanol	0.32
50.399	trans-Cadina-1(6),4-diene	0.11
50.533	gamma-Curcumene	0.18
50.735	Ar-Curcumene	0.25
50.821	Germacrene D	1.01
50.954	(Z,E)-alpha-Farnesene	0.78
51.552	Curzerene	0.13
52.015	cis-alpha-Bisabolene	22.70
52.402	beta-Bisabolene	2.96
52.480	Unidentified	0.14
52.602	beta-Himachalene	0.23
52.771	Bicyclogermacrene	0.32
53.036	alpha-Teresantalic acid	4.09
53.380	Unidentified	0.17
53.530	(E)-gamma-Bisabolene	0.35
53.710	Unidentified	0.10
53.788	Unidentified	0.17
54.294	trans-alpha-Bisabolene	0.17
54.481	Unidentified	0.26
54.788	alpha-Elemol	0.32
55.122	Unidentified	0.15
55.378	Unidentified	0.08
55.465	Unidentified	0.07
55.552	Unidentified	0.22
55.868	Unidentified	0.09

Chromatogram Opoponax - Edens Garden



Comments:

The analysis of this Opoponax batch sample meets the expected chemical profile for authentic essential oil of *Commiphora erythraea*. No contamination or adulteration was detected. The results provided in this GCMS quality analysis reflect the chemical composition of the oil and lot referenced above on the date of analysis.

R.Time	Name	Area%
56.393	Unidentified	0.13
56.513	Spathulenol	0.23
56.849	Unidentified	0.31
56.916	Unidentified	0.17
57.467	Unidentified	0.08
57.808	Curzerenone	0.05
57.932	Unidentified	0.08
58.060	Longiborneol	0.26
58.182	Unidentified	0.14
58.275	Unidentified	0.09
58.737	Unidentified	0.08
58.841	Unidentified	0.16
58.952	Unidentified	0.16
59.160	Humulane-1,6-dien-3-ol	0.05
59.294	Furanoeudesma-1,3-diene	0.11
59.735	gamma-Eudesmol + alpha-Acorenol	0.27
59.956	Unidentified	0.05
60.210	tau-Cadinol	0.08
60.457	Unidentified	0.20
60.616	Unidentified	0.45
60.980	Unidentified	0.64
61.528	14-Hydroxycaryophyllene isomer	0.18
61.730	Bergamotol isomer	0.48
61.848	beta-Bisabolol	0.11
62.063	Unidentified	3.30
62.254	(Z)-alpha-Santalal	3.07
62.595	cis-alpha-Bisabolol	0.14
62.717	trans-alpha-Bisabolol	0.34
62.928	Unidentified	0.06
63.104	Unidentified	0.07
63.193	(E)-alpha-Santalol	0.10
63.907	Unidentified	0.20
64.014	Unidentified	0.37
64.214	Unidentified	0.12
64.730	Unidentified	0.42
66.964	Benzyl benzoate	0.09
67.280	Unidentified	0.31
71.110	Unidentified	0.04
73.201	Unidentified	0.77
		100.00