

Sample Information

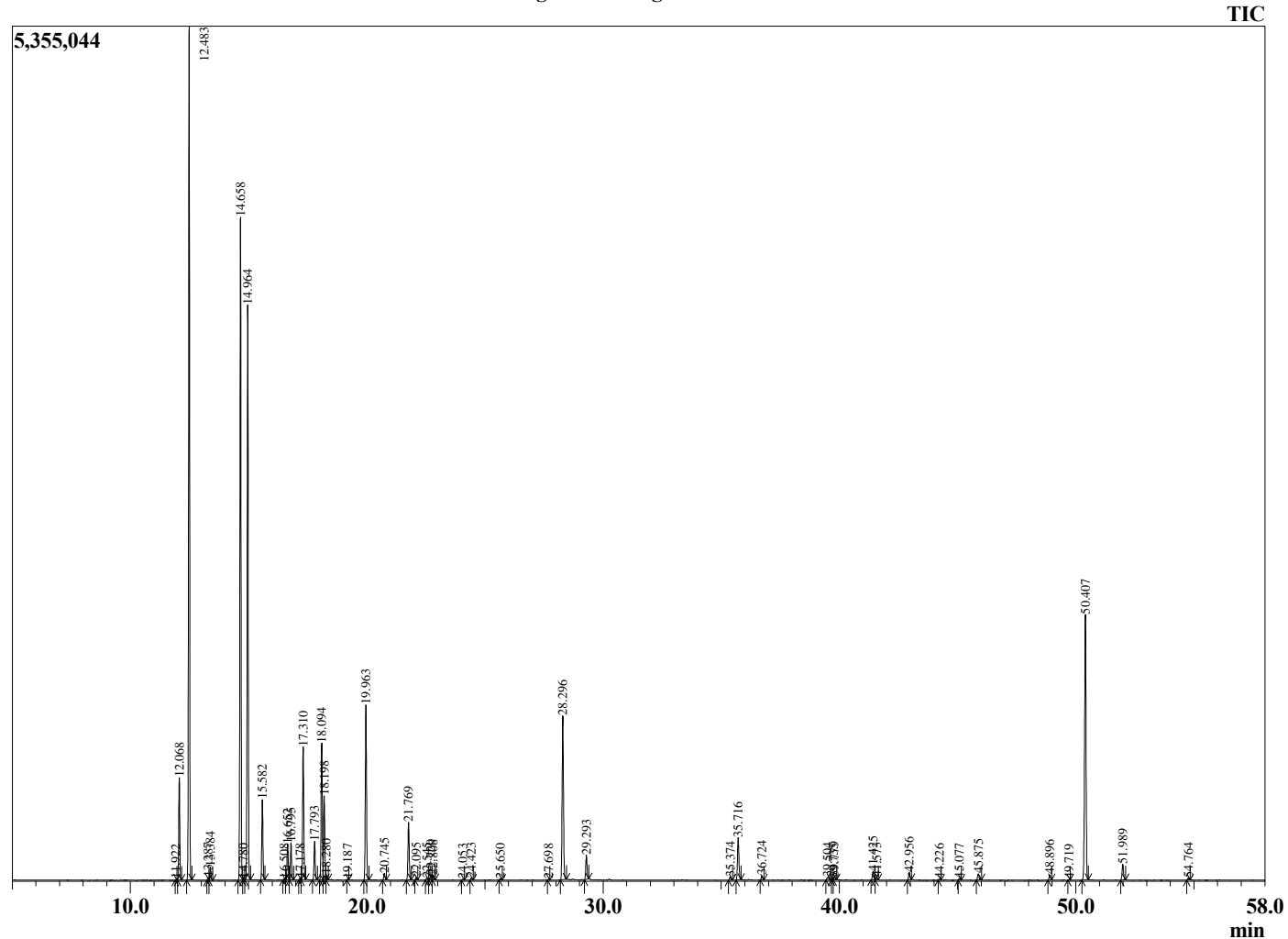
Analyzed by : Dr. Robert S. Pappas
 Analyzed : 11/20/2020 4:44:11 PM
 Sample Type : Essential Oil
 Sample Name : Nutmeg Oil-Edens Garden
 Sample ID : BA29IAK
 Injection Volume : 0.10
 Instrument ID : GC-4



Peak Report TIC

R.Time	Name	Area%
11.922	Unidentified	0.01
12.068	alpha-Thujene	2.52
12.483	alpha-Pinene	21.37
13.287	alpha-Fenchene	0.06
13.384	Camphene	0.34
14.658	Sabinene	17.61
14.780	Unidentified	0.03
14.964	beta-Pinene	15.24
15.582	Myrcene	2.17
16.508	Pseudolimonene	0.04
16.652	alpha-Phellandrene	1.01
16.795	delta-3-Carene	1.03
17.178	1,4-Cineole	0.04
17.310	alpha-Terpinene	3.82
17.793	para-Cymene	1.10
18.094	Limonene	3.98
18.198	beta-Phellandrene	2.45
18.280	1,8-cineole	0.09
19.187	(E)-beta-Ocimene	0.02
19.963	gamma-Terpinene	5.21
20.745	trans-Sabinene hydrate	0.21
21.769	Terpinolene	1.76
22.095	Dehydro-para-cymene	0.07
22.545	1-Adamantanol	0.07
22.720	Linalool	0.16
22.808	cis-Sabinene hydrate	0.15
24.053	endo-Fenchol	0.03
24.423	cis-p-menth-2-en-1-ol	0.07
25.650	trans-p-menth-2-en-1-ol	0.04
27.698	Borneol	0.02
28.296	Terpinen-4-ol	5.37
29.293	alpha-Terpineol	0.78
35.374	Bornyl acetate	0.10
35.716	Safrole	1.39
36.724	Unidentified	0.14
39.504	alpha-Terpinyl acetate	0.12
39.735	Citronellyl acetate	0.03
39.779	Eugenol	0.09
41.425	alpha-Copaene	0.29
41.573	Geranyl acetate	0.08
42.956	Methyleugenol	0.24
44.226	trans-beta-Caryophyllene	0.03
45.077	trans-alpha-Bergamotene	0.05
45.875	(E)-Isoeugenol	0.24
48.896	Methyl isoeugenol	0.18
49.719	beta-Bisabolene	0.02
50.407	Myristicin	9.48
51.989	Elemicin	0.54
54.764	Methoxyeugenol	0.07
		100.00

Chromatogram Nutmeg Oil-Edens Garden



Comments:

The analysis of this Nutmeg batch sample meets the expected chemical profile for authentic essential oil of *Myristica fragrans*. No contamination or adulteration was detected. The results provided in this GCMS quality analysis reflect the chemical composition of the oil and lot referenced above on the date of analysis.