

Sample Information

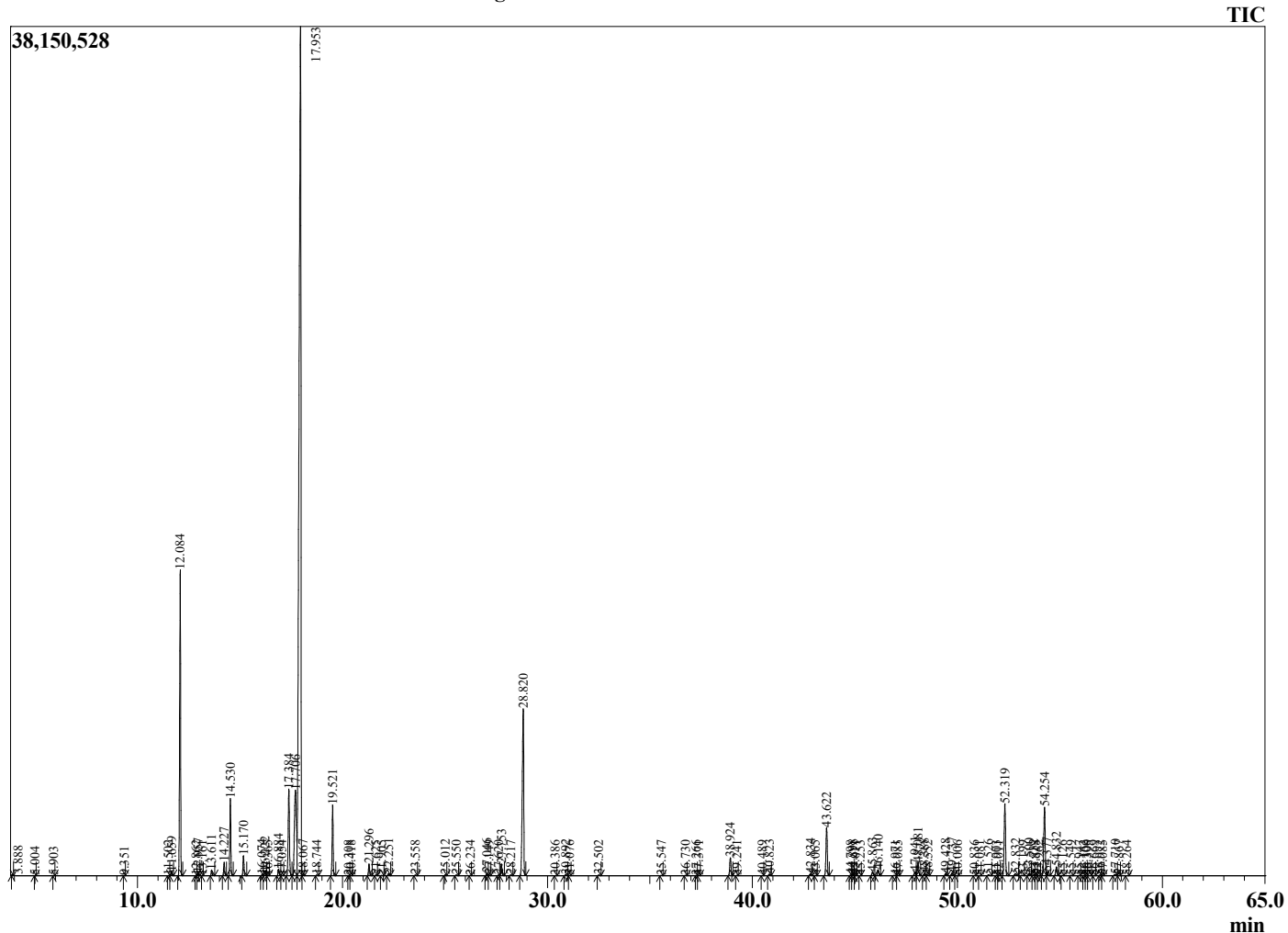
Analyzed by : Dr. Robert S. Pappas  
 Analyzed : 7/29/2022 10:11:02 PM  
 Sample Type : Essential Oil  
 Sample Name : Niaouli Cineole CT - Edens Garden  
 Sample ID : EG Lot # BB22JY  
 Injection Volume : 0.10  
 Instrument ID : GC-2



Peak Report TIC

R.Time	Name	Area%
3.888	3-Methylbutanal	0.02
5.004	1-Pentanol	0.01
5.903	alpha-Methyl methylbutyrate	0.01
9.351	2-Methylbutyl acetate	0.00
11.502	Tricyclene	0.01
11.659	alpha-Thujene	0.12
12.084	alpha-Pinene	9.74
12.862	alpha-Fenchene	0.01
12.957	Camphene	0.07
13.161	Thuja-2,4(10)-diene	0.00
13.611	Benzaldehyde	0.18
14.227	Sabinene	0.44
14.530	beta-Pinene	2.50
15.170	Myrcene	0.66
16.074	Pseudolimonene	0.03
16.222	alpha-Phellandrene	0.15
16.365	delta-3-Carene	0.01
16.884	alpha-Terpinene	0.23
17.054	ortho-Cymene	0.01
17.384	para-Cymene	3.64
17.706	Limonene	5.62
17.953	1,8-Cineole	52.54
18.067	cis-beta-Ocimene	0.04
18.744	trans-beta-Ocimene	0.02
19.521	gamma-Terpinene	2.40
20.308	cis-Linalool oxide (furanoid)	0.01
20.418	Pinol	0.01
21.296	Terpinolene	0.42
21.625	para-Cymenene	0.02
21.905	Methyl benzoate	0.02
22.251	Linalool	0.09
23.558	alpha-Fenchol	0.02
25.012	trans-Pinocarveol	0.03
25.550	Isopulegol	0.03
26.234	Neoisoisopulegol	0.01
27.046	delta-Terpineol	0.09
27.149	Borneol	0.02
27.620	Unidentified	0.03
27.753	Terpinen-4-ol	0.46
28.217	para-Cymen-8-ol	0.03
28.820	alpha-Terpineol	7.92
30.386	trans-Carveol	0.00
30.892	Unidentified	0.03
31.076	cis-para-Mentha-1(7),8-dien-2-ol	0.01
32.502	Geraniol	0.02
35.547	Methyl thiobenzoate	0.01
36.730	delta-Terpinyol acetate	0.02
37.266	Unidentified	0.01
37.371	Myrtenyl acetate	0.01
38.924	alpha-Terpinyol acetate	0.75
39.241	Eugenol	0.01
40.489	Isolodene	0.01
40.823	alpha-Copaene	0.06
42.834	alpha-Gurjunene	0.08
43.065	Dodecanal	0.01
43.622	beta-Caryophyllene	2.07
44.798	beta-Copaene	0.03
44.898	Unidentified	0.07
45.011	alpha-Guaiene	0.02
45.253	Selina-5,11-diene	0.01
45.863	alpha-Humulene	0.16
46.140	Alloaromadendrene	0.24

Chromatogram Niaouli Cineole CT - Edens Garden



Comments:

The analysis of this Niaouli Cineole CT batch sample meets the expected chemical profile for authentic essential oil of Melaleuca quinquenervia.

No contamination or adulteration was detected. The results provided in this GCMS quality analysis reflect the chemical composition of the oil and lot referenced above on the date of analysis.

R.Time	Name	Area%
46.971	Selina-4,11-diene	0.03
47.085	trans-Cadina-1(6),4-diene	0.02
47.941	beta-Selinene	0.19
48.081	Viridiflorene	0.59
48.388	alpha-Selinene	0.10
48.552	alpha-Muurolene	0.03
49.428	gamma-Cadinene	0.10
49.737	delta-Cadinene	0.13
50.006	Zonarene	0.01
50.836	alpha-Cadinene	0.01
51.081	Unidentified	0.00
51.526	Elemol	0.05
51.903	cis-Nerolidol	0.01
52.011	Unidentified	0.01
52.319	trans-Nerolidol	3.19
52.832	Palustrol	0.12
53.199	Unidentified	0.01
53.500	Caryophyllene oxide	0.11
53.732	Globulol	0.04
53.818	Gleenol	0.03
53.962	Unidentified	0.01
54.254	Viridiflorol	3.13
54.377	Cubeban-11-ol	0.15
54.832	Ledol	0.39
55.126	Humulene epoxide II	0.01
55.549	alpha-Colocalene	0.02
55.947	Eudesm-5-en-11-ol	0.01
56.162	1-epi-Cubenol	0.01
56.300	Eremoligenol isomer	0.01
56.395	gamma-Eudesmol	0.02
56.669	Caryophylla-4(12),8(13)-dien-5-beta-ol	0.01
56.972	tau-Cadinol	0.03
57.085	epi-alpha-Cadinol	0.01
57.710	alpha-Eudesmol	0.08
57.867	Intermedeol	0.01
58.264	Bulnesol	0.01
		100.00