

Sample Information

Analyzed by : Dr. Robert S. Pappas  
 Analyzed : 10/24/2018 12:50:00 AM  
 Sample Type : Essential Oil  
 Sample Name : Niaouli - Edens Garden  
 Sample ID : AH15JH  
 Injection Volume : 0.10  
 Instrument ID : GC-3

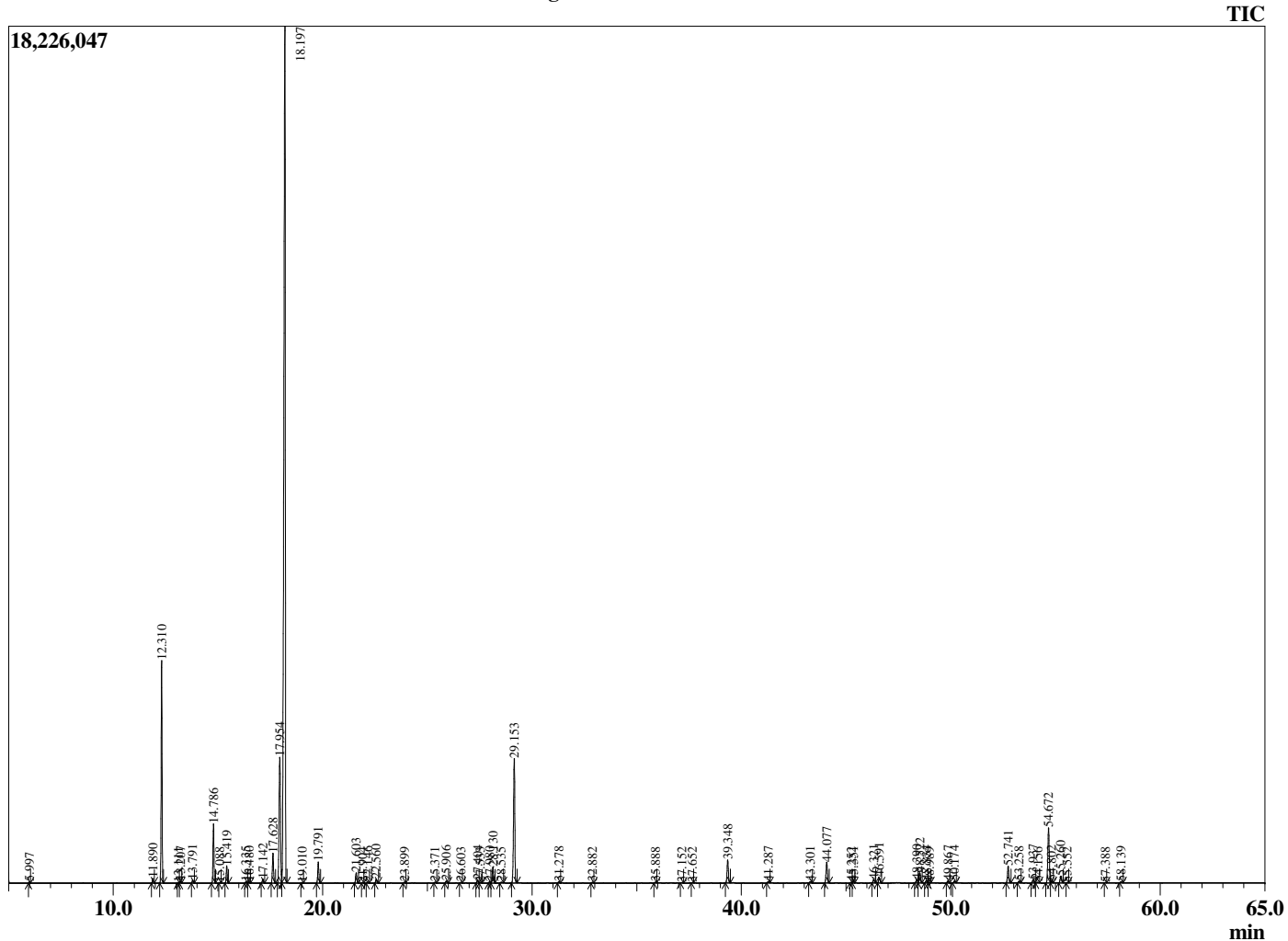


Peak Report TIC

R.Time	Name	Area%
5.997	Methyl 2-methylbutyrate	0.04
11.890	alpha-Thujene	0.18
12.310	alpha-Pinene	9.20
13.111	alpha-Fenchene	0.02
13.207	Camphene	0.08
13.791	Benzaldehyde	0.14
14.786	beta-Pinene	2.59
15.088	6-Methyl hept-5-en-2-one	0.02
15.419	Myrcene	0.76
16.335	Pseudolimonene	0.06
16.480	alpha-Phellandrene	0.05
17.142	alpha-Terpinene	0.20
17.628	para-Cymene	1.53
17.954	Limonene	8.01
18.197	1,8-Cineole	56.34
19.010	trans-beta-Ocimene	0.03
19.791	gamma-Terpinene	1.04
21.603	Terpinolene	0.53
21.904	para-Cymene	0.03
22.146	Methyl benzoate	0.05
22.560	Linalool	0.19
23.899	alpha-Fenchol	0.04
25.371	trans-Pinocarveol	0.04
25.906	Isopulegol	0.10
26.603	Isosopulegol	0.03
27.404	delta-Terpineol	0.16
27.533	Borneol	0.03
27.980	Unidentified	0.07
28.130	Terpinen-4-ol	0.86
28.535	para-Cymen-8-ol	0.05
29.153	alpha-Terpineol	7.13
31.278	Citronellol	0.07
32.882	Geraniol	0.03
35.888	Methyl thiobenzoate	0.04
37.152	delta-Terpinyl acetate	0.03
37.652	Unidentified	0.02
39.348	alpha-Terpinyl acetate	1.34
41.287	alpha-Copaene	0.08
43.301	alpha-Gurjunene	0.08
44.077	beta-Caryophyllene	1.27
45.252	Aromadendrene	0.03
45.351	Unidentified	0.09
46.321	alpha-Humulene	0.20
46.591	Alloaromadendrene	0.32
48.390	beta-Selinene	0.24
48.522	Viridiflorene (Ledene)	0.64
48.834	alpha-Selinene	0.14
48.989	alpha-Muurolole	0.03
49.867	gamma-Cadinene	0.11
50.174	delta-Cadinene	0.12
52.741	trans-Nerolidol	1.02
53.258	Palustrol	0.10
53.937	Caryophyllene oxide	0.21
54.156	Globulol	0.03
54.672	Viridiflorol	3.54
54.802	Guaiol	0.11
55.260	Ledol	0.42
55.552	Humulene epoxide II	0.02
57.388	alpha-Muurolol (=Torreyol)	0.02
58.139	Unidentified	0.05
		100.00

This report is valid for 1 year from the analyzed date.

Chromatogram Niaouli - Edens Garden



Comments:

The analysis of this Niaouli batch sample meets the expected chemical profile for authentic essential oil of *Melaleuca quinquenervia*. No contamination or adulteration was detected.