

Sample Information

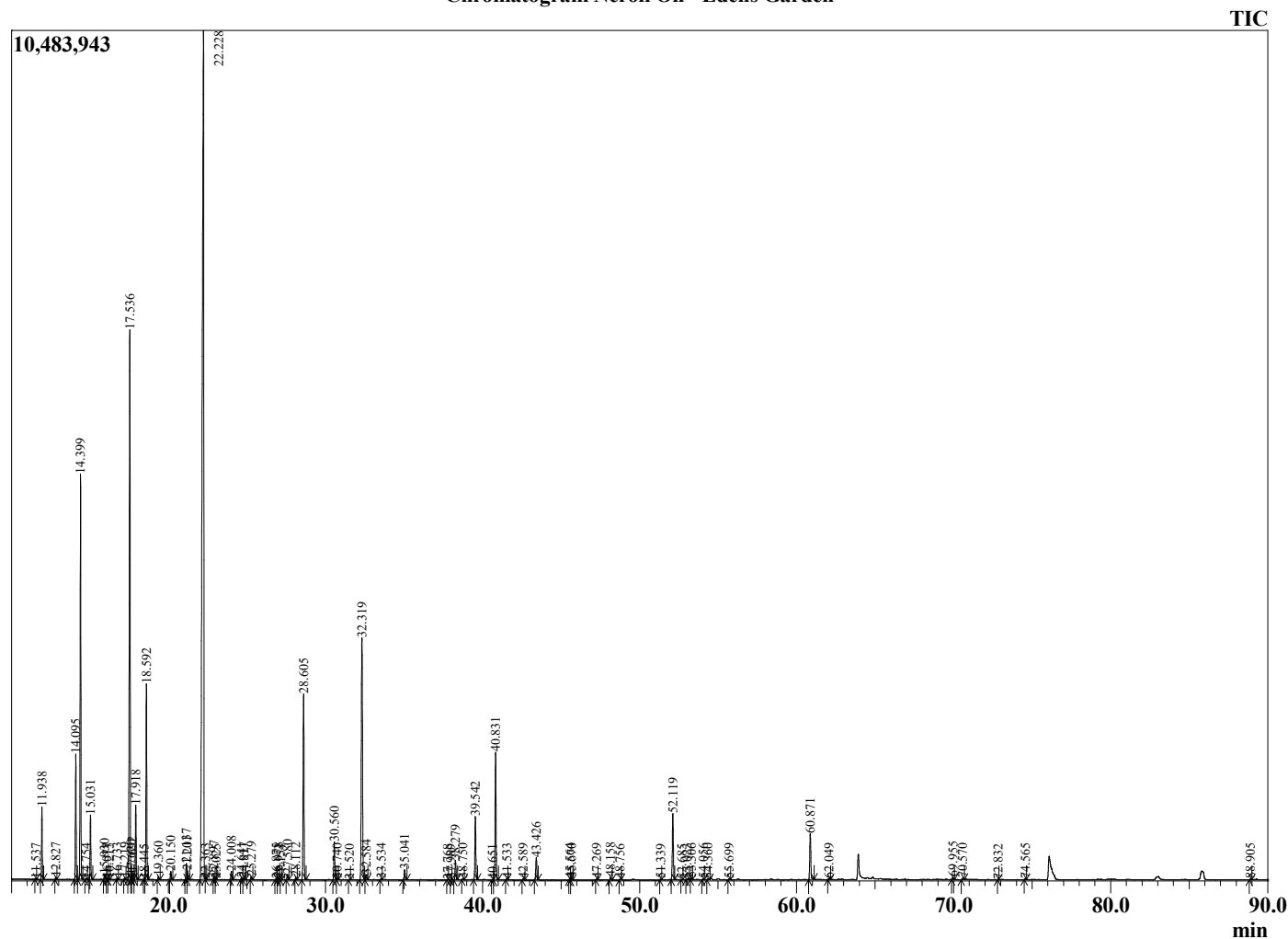
Analyzed by : Dr. Robert S. Pappas
 Analyzed : 7/13/2022 5:03:16 PM
 Sample Type : Essential Oil
 Sample Name : Neroli Oil - Edens Garden
 Sample ID : EG Lot #BB17JX
 Injection Volume : 0.10
 Instrument ID : GC-2



Peak Report TIC

R.Time	Name	Area%
11.537	alpha-Thujene	0.02
11.938	alpha-Pinene	1.39
12.827	Camphene	0.04
14.095	Sabinene	2.59
14.399	beta-Pinene	8.65
14.754	Unidentified	0.02
15.031	Myrcene	1.36
15.930	Pseudolimonene	0.13
16.077	alpha-Phellandrene	0.02
16.215	delta-3-Carene	0.02
16.733	alpha-Terpinene	0.04
17.219	para-Cymene	0.04
17.536	Limonene	13.85
17.620	beta-Phellandrene	0.07
17.692	1,8-Cineole	0.17
17.918	cis-beta-Ocimene	1.65
18.445	Unidentified	0.01
18.592	trans-beta-Ocimene	4.44
19.360	gamma-Terpinene	0.07
20.150	cis-Linalool oxide (furanoid)	0.21
21.137	Terpinolene	0.41
21.201	trans-Linalool oxide (furanoid)	0.19
22.228	Linalool	38.47
22.363	Hotrienol	0.01
22.897	Phenethyl alcohol	0.09
23.025	trans-4,8-Dimethylnona-1,3,7-triene	0.01
24.008	allo-Ocimene	0.21
24.641	Benzeneacetoneitrile	0.04
24.817	neo-allo-Ocimene	0.05
25.279	Camphor	0.08
26.875	delta-Terpineol	0.04
26.978	Borneol	0.05
27.154	cis-Linalool oxide (pyranoid)	0.01
27.580	Terpinen-4-ol	0.14
28.112	Unidentified	0.06
28.605	alpha-Terpineol	5.06
30.560	Nerol	0.98
30.740	Citronellol	0.02
31.520	Neral	0.01
32.319	Linalyl acetate + Geraniol	8.35
32.584	2-Phenethyl acetate	0.14
33.534	Geranial	0.02
35.041	Indole	0.29
37.768	delta-Elementene isomer	0.01
37.989	delta-Elementene	0.02
38.279	Methyl anthranilate	0.52
38.750	alpha-Terpinyl acetate	0.03
39.542	Neryl acetate	1.72
40.651	Unidentified	0.01
40.831	Geranyl acetate	3.53
41.533	beta-Elementene	0.02
42.589	Methyl-N-methyl anthranilate	0.03
43.426	trans-beta-Caryophyllene	0.66
45.564	trans-beta-Farnesene	0.03
45.670	alpha-Humulene	0.05
47.269	Germacrene D	0.03
48.158	Bicyclogermacrene	0.08
48.756	trans,trans-alpha-Farnesene	0.02
51.339	alpha-Elementol	0.02
52.119	trans-Nerolidol	1.89
52.685	Unidentified	0.01
53.023	Unidentified	0.04

Chromatogram Neroli Oil - Edens Garden



Comments:

The analysis of this Neroli Oil batch sample meets the expected chemical profile for authentic essential oil of Citrus aurantium.

No contamination or adulteration was detected. The results provided in this GCMS quality analysis reflect the chemical composition of the oil and lot referenced above on the date of analysis.

©Copyright 2022 by Essential Oil University. All rights reserved. Any publishing, copying, use, dissemination, or distribution of this report, including online, without the express written permission of Essential Oil University is strictly prohibited.

R.Time	Name	Area%
53.306	Caryophyllene oxide	0.03
54.056	Viridiflorol	0.03
54.360	Unidentified	0.05
55.699	Unidentified	0.03
60.871	(2E,6E)-Farnesol	1.45
62.049	Unidentified	0.04
69.955	Unidentified	0.08
70.570	Heptadecanal	0.05
72.832	Unidentified	0.01
74.565	Unidentified	0.03
88.905	Tricosane	0.02
		100.00