

Sample Information

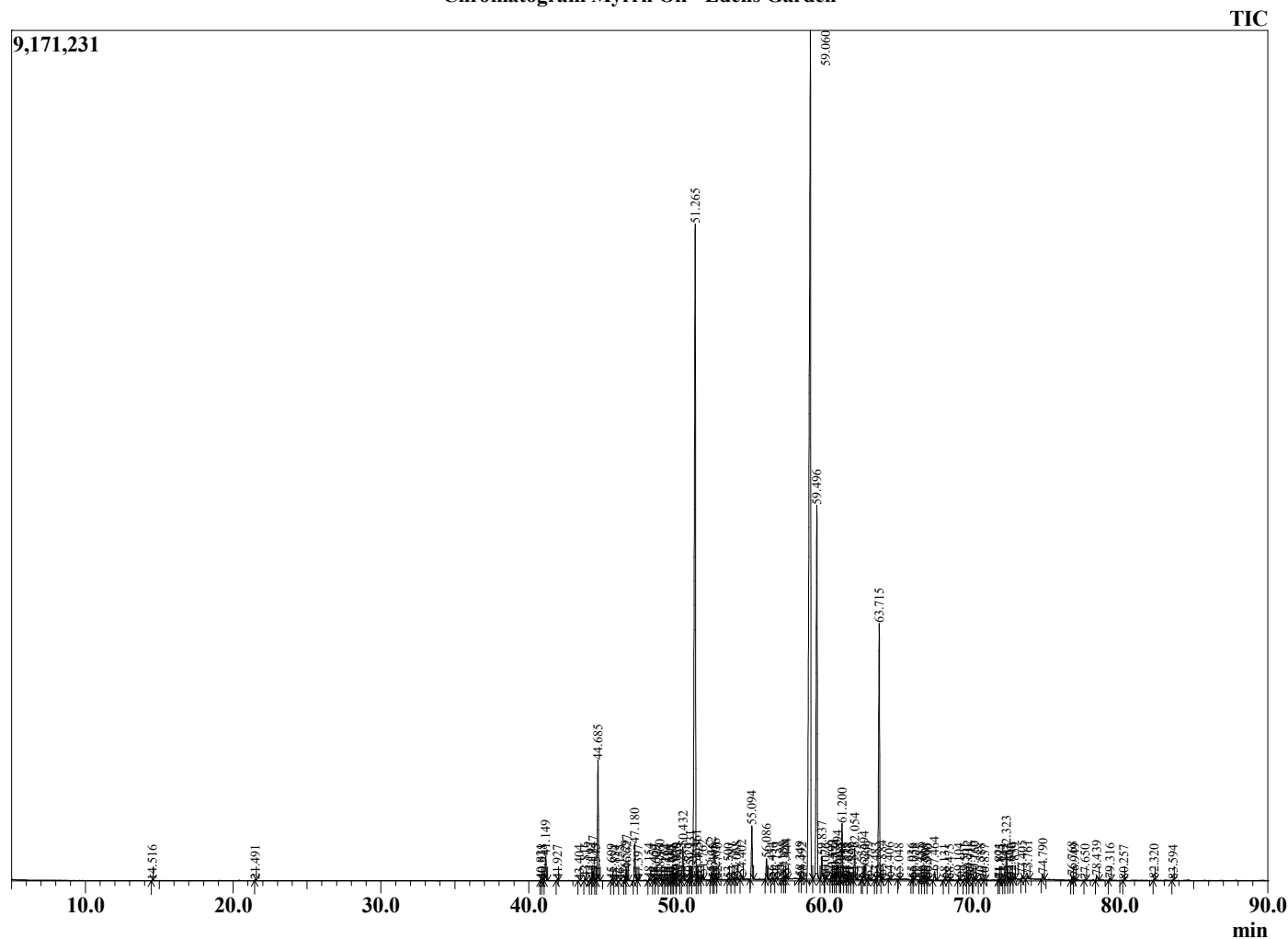
Analyzed by : Dr. Robert S. Pappas
 Analyzed : 7/29/2022 12:40:33 AM
 Sample Type : Essential Oil
 Sample Name : Myrrh Oil - Edens Garden
 Sample ID : EG Lot # BB30JW
 Injection Volume : 0.10
 Instrument ID : GC-2



Peak Report TIC

R.Time	Name	Area%
3.728	Ethanol	0.03
14.516	alpha-Pinene	0.01
21.491	(E)-beta-Ocimene	0.01
40.821	Elemene analog	0.03
40.918	Elemene analog	0.02
41.149	delta-Elemene	0.65
41.927	alpha-Cubebene	0.02
43.404	alpha-Ylangene	0.01
43.816	alpha-Copaene	0.08
44.197	Elemene analog	0.07
44.347	beta-Bourbonene	0.25
44.545	alphaBourbonene	0.03
44.685	beta-Elemene	3.19
45.609	Cyperene	0.03
45.834	alpha-Gurjunene	0.01
46.155	cis-alpha-Bergamotene	0.01
46.529	beta-Ylangene	0.13
46.627	trans-beta-Caryophyllene	0.30
47.180	gamma-Elemene + beta-Copaene	1.04
47.397	trans-alpha-Bergamotene	0.01
48.154	Isogermacrene D	0.05
48.454	6,9-Guanidiene	0.02
48.609	Unidentified	0.01
48.860	alpha-Humulene	0.16
49.132	Alloaromodendrene	0.03
49.264	Rotundene	0.02
49.516	Unidentified	0.01
49.665	Unidentified	0.02
49.751	Unidentified	0.03
49.930	Selina-4,11-diene	0.06
50.023	trans-Cadina-1(6),4-diene	0.10
50.293	alpha-Amorphene	0.03
50.432	Germacrene D	0.90
50.827	Unidentified	0.04
50.931	beta-Selinene	0.39
51.265	Curzerene	23.33
51.361	alpha-Selinene	0.38
51.495	alpha-Murolene +alpha-Bulnesene	0.11
51.762	Unidentified	0.16
52.362	gamma-Cadinene	0.20
52.495	Cubebol	0.02
52.636	delta-Cadinene	0.15
52.770	(-)-alpha-Panasinsen	0.01
53.500	Unidentified	0.03
53.781	Selina-4(15),7(11)-diene	0.07
54.068	Unidentified + Selina-3,7(11)-diene	0.09
54.402	alpha-Elemol	0.12
55.094	Germacrene B	1.43
56.086	Furanouedesma-1,4-diene	0.56
56.454	Caryophyllene oxide	0.03
56.739	Unidentified	0.03
57.188	Unidentified	0.06
57.328	beta-Elemenone	0.10
57.444	Curzerenone	0.15
58.349	1,10-di-epi-Cubanol	0.04
58.492	Unidentified	0.02
59.060	Furanouedesma-1,3-diene	37.37
59.496	Lindrestrene	11.85
59.837	tau-Cadinol	0.73
60.076	delta-Cadinol	0.02
60.499	Unidentified	0.12
60.593	alpha-Eudesmol	0.14

Chromatogram Myrrh Oil - Edens Garden



Comments:

The analysis of this Myrrh Oil batch sample meets the expected chemical profile for authentic essential oil of Commiphora myrrha.

No contamination or adulteration was detected. The results provided in this GCMS quality analysis reflect the chemical composition of the oil and lot referenced above on the date of analysis.

©Copyright 2022 by Essential Oil University. All rights reserved. Any publishing, copying, use, dissemination, or distribution of this report, including online, without the express written permission of Essential Oil University is strictly prohibited.

R.Time	Name	Area%
60.774	Unidentified	0.15
60.894	Furanodiene	0.52
61.085	Unidentified	0.03
61.200	Intermedeol	1.60
61.355	Unidentified	0.05
61.538	Unidentified	0.02
61.637	Unidentified	0.02
61.899	Unidentified	0.06
62.054	2-Methoxyfuranodiene A	0.90
62.535	Unidentified	0.02
62.694	Germacrone	0.46
62.999	Unidentified	0.11
63.483	Unidentified	0.05
63.715	2-Methoxyfuranodiene B	7.60
63.884	Unidentified	0.12
64.406	Unidentified	0.05
65.048	Unidentified	0.02
65.936	Unidentified	0.03
66.058	Unidentified	0.04
66.485	Unidentified	0.03
66.669	Unidentified	0.08
66.868	Nootkatol	0.06
66.990	Unidentified	0.03
67.464	Hinesol acetate	0.28
68.131	Unidentified	0.03
68.475	Unidentified	0.01
69.104	Unidentified	0.06
69.501	Unidentified	0.07
69.712	Acetoxifyfuranodiene analog	0.12
69.916	Unidentified	0.17
70.160	Unidentified	0.11
70.588	Unidentified	0.09
70.837	Unidentified	0.02
71.821	Unidentified	0.03
71.895	Unidentified	0.02
72.143	Unidentified	0.02
72.323	2-Acetoxifyfuranodiene	0.83
72.465	Unidentified	0.06
72.646	Unidentified	0.04
72.859	Unidentified	0.03
73.405	Unidentified	0.10
73.761	Unidentified	0.12
74.790	Unidentified	0.16
76.768	Unidentified	0.11
76.949	Unidentified	0.06
77.650	Unidentified	0.03
78.439	Unidentified	0.17
79.316	Unidentified	0.05
80.257	Unidentified	0.01
82.320	Unidentified	0.03
83.594	Unidentified	0.02
		100.00