

Sample Information

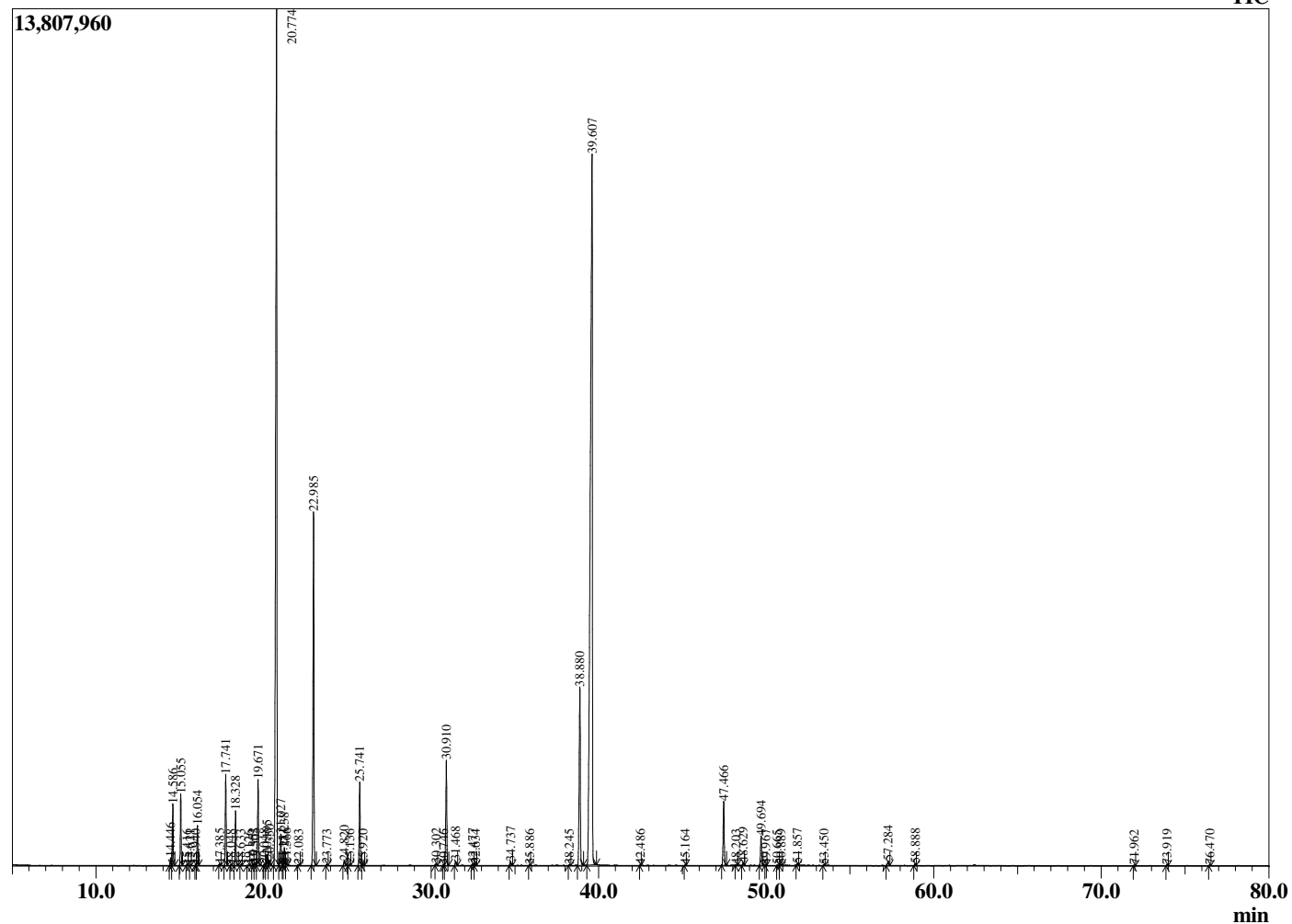
Analyzed by : Dr. Robert S. Pappas  
 Analyzed : 7/12/2020 11:29:46 PM  
 Sample Type : Essential Oil  
 Sample Name : Mountain Savory - Edens Garden  
 Sample ID : BA18FAJ  
 Injection Volume : 0.10  
 Instrument ID : GC-3



Peak Report TIC

R.Time	Name	Area%
14.446	Tricyclene	0.16
14.586	alpha-Thujene	1.28
15.055	alpha-Pinene	1.47
15.416	beta-Fenchene	0.01
15.621	Thuja-2,4(10)diene	0.01
15.940	alpha-Fenchene	0.02
16.054	Camphene	0.85
17.385	Sabinene	0.03
17.741	beta-Pinene	2.05
18.048	Unidentified	0.02
18.328	Myrcene	1.21
18.633	cis-para-Menthane	0.01
19.126	1-para-Menthene	0.01
19.352	Pseudolimonene	0.05
19.505	alpha-Phellandrene	0.06
19.671	delta-3-Carene	2.00
20.048	1,4-Cineole	0.04
20.195	alpha-Terpinene	0.26
20.350	ortho-Cymene	0.12
20.774	para-Cymene	26.84
21.027	Limonene	0.73
21.151	beta-Phellandrene	0.03
21.238	1,8-cineole	0.41
21.366	meta-Cymene	0.04
22.083	trans-beta-Ocimene	0.02
22.985	gamma-Terpinene	9.04
23.773	trans-Sabinene hydrate	0.03
24.820	Terpinolene	0.13
25.136	para-Cymenene	0.03
25.741	Linalool	2.06
25.920	cis-Sabinene hydrate	0.03
30.302	Isoborneol	0.05
30.746	Thuj-3-en-2-one (Umbellulone)	0.01
30.910	Borneol	2.86
31.468	Terpinen-4-ol	0.11
32.477	alpha-Terpineol	0.05
32.634	Estragole	0.03
34.737	Thymol methyl ether	0.10
35.886	Carvone	0.01
38.245	Isothymol	0.02
38.880	Thymol	5.43
39.607	Carvacrol	39.14
42.486	Thymol acetate	0.01
45.164	beta-Bourbonene	0.01
47.466	beta-Caryophyllene	1.84
48.203	trans-alpha-Bergamotene	0.01
48.629	Aromadendrene	0.07
49.694	alpha-Humulene	0.84
49.967	Alloaromadendrene	0.01
50.665	trans-Cadina-1(6),4-diene	0.01
50.889	Unidentified	0.02
51.857	Viridiflorene (Ledene)	0.05
53.450	delta-Cadinene	0.02
57.284	Caryophyllene oxide	0.15
58.888	Humulene epoxide II	0.05
71.962	Unidentified	0.01
73.919	Unidentified	0.02
76.470	Unidentified	0.02
		100.00

Chromatogram Mountain Savory - Edens Garden



Comments:

The analysis of this Mountain Savory batch sample meets the expected chemical profile for authentic essential oil of *Satureja montana*. No contamination or adulteration was detected. The results provided in this GCMS quality analysis reflect the chemical composition of the oil and lot referenced above on the date of analysis.