

Sample Information

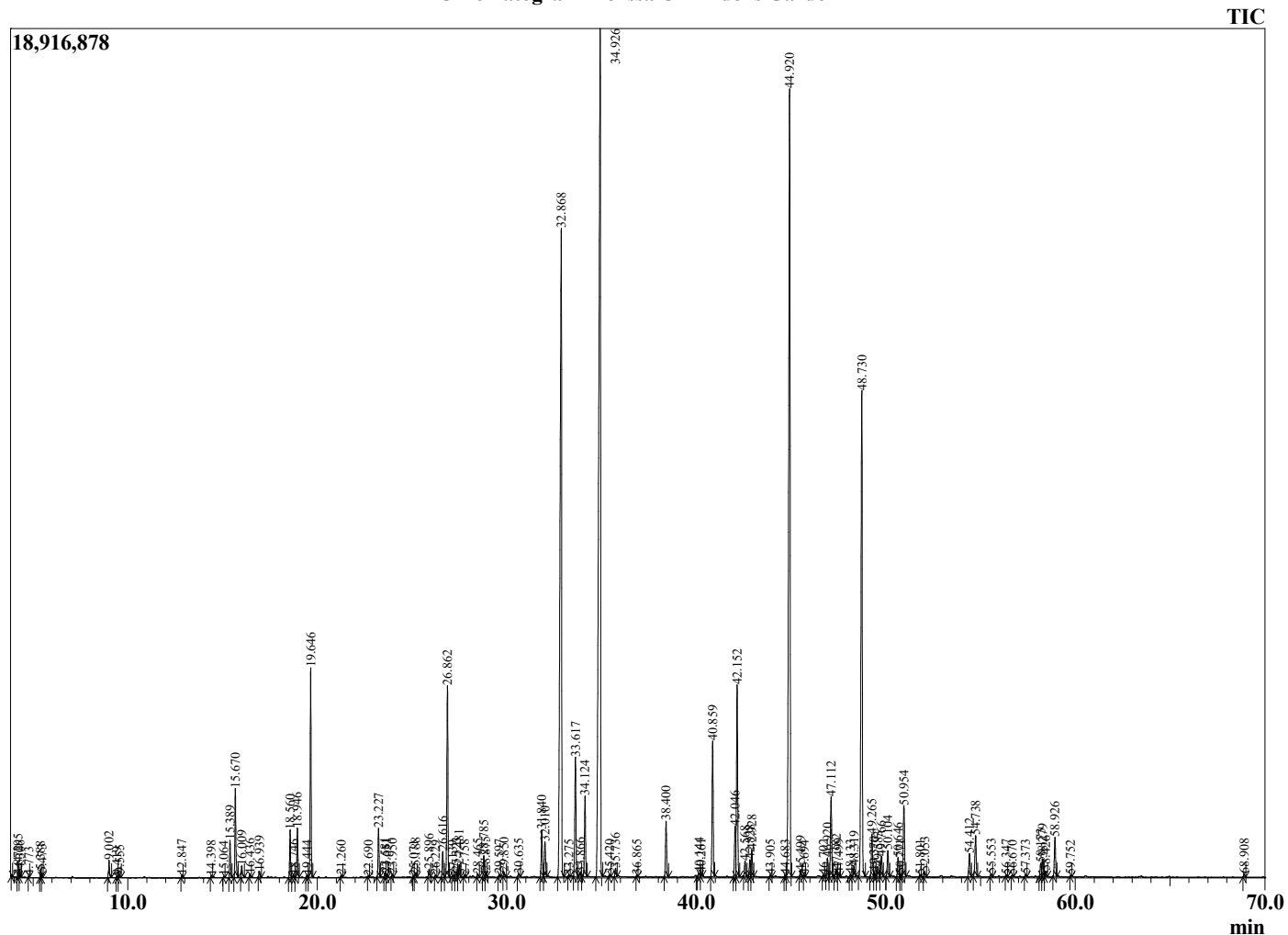
Analyzed by : Dr. Robert S. Pappas  
 Analyzed : 7/28/2022 7:47:29 PM  
 Sample Type : Essential Oil  
 Sample Name : Melissa Oil - Edens Garden  
 Sample ID : EG Lot #BB11GAM  
 Injection Volume : 0.10  
 Instrument ID : GC-3



Peak Report TIC

R.Time	Name	Area%
3.872	Isobutyl alcohol	0.01
4.195	3-Methylbutanal	0.12
4.306	2-Methylbutanal	0.07
4.773	2-Ethylfuran	0.02
5.388	1-Pentanol	0.07
5.473	2-Methyl butanol	0.04
9.002	Hex-(3Z)-enol	0.24
9.419	Hex-(2E)-enol	0.02
9.555	Hexanol	0.05
12.847	alpha-Pinene	0.04
14.398	Benzaldehyde	0.03
15.064	Sabinene	0.02
15.389	1-Octen-3-ol	0.49
15.670	6-Methyl hept-5-en-2-one	1.30
16.009	Myrcene	0.19
16.436	3-Octanol	0.04
16.939	Hex-(3Z)-enyl acetate	0.09
18.560	Limonene	0.63
18.746	1,8-cineole	0.04
18.946	cis-beta-Ocimene	0.71
19.444	Phenylacetaldehyde	0.03
19.646	trans-beta-Ocimene	3.00
21.260	cis-Linalool oxide (furanoid)	0.03
22.690	Rosefuran	0.01
23.227	Linalool	0.73
23.581	Nonanal	0.06
23.651	alpha-Pinene oxide	0.05
23.950	cis-Rose oxide	0.04
25.071	trans-Rose oxide	0.02
25.188	allo-Ocimene	0.07
25.896	Epiphocitral A	0.12
26.229	exo-Isocitral	0.03
26.616	trans-Chrysanthemal	0.40
26.862	Citronellal	3.06
27.139	Menthone	0.02
27.323	Isopulegol	0.08
27.481	Isoneral	0.20
27.758	Isomenthone	0.03
28.465	Unidentified	0.05
28.785	Isogeranial	0.35
28.875	Unidentified	0.07
29.597	Methyl salicylate	0.04
29.850	alpha-Terpineol	0.07
30.635	Unidentified	0.06
31.840	Nerol	0.77
32.010	Citronellol	0.63
32.868	Neral	15.12
33.275	Unidentified	0.02
33.617	Geraniol	2.08
33.866	Piperitone	0.08
34.124	Methyl citronellate	1.35
34.926	Geranial	22.73
35.420	Methyl nerate	0.04
35.736	trans-Carvone oxide	0.14
36.865	Geranyl formate	0.02
38.400	Methyl geranate	0.93
40.144	alpha-Cubebene	0.07
40.261	Citronellyl acetate	0.05
40.859	Neryl acetate	2.28
42.046	alpha-Copaene	0.85
42.152	Geranyl acetate	3.36
42.568	beta-Bourbonene	0.27

Chromatogram Melissa Oil - Edens Garden



Comments:

The analysis of this Melissa Oil batch sample meets the expected chemical profile for authentic essential oil of Melissa officinalis.

No contamination or adulteration was detected. The results provided in this GCMS quality analysis reflect the chemical composition of the oil and lot referenced above on the date of analysis.

©Copyright 2022 by Essential Oil University. All rights reserved. Any publishing, copying, use, dissemination, or distribution of this report, including online, without the express written permission of Essential Oil University is strictly prohibited.

R.Time	Name	Area%
42.828	beta-Cubebene	0.30
42.928	beta-Elemene	0.47
43.905	cis-beta-Caryophyllene	0.04
44.683	Unidentified	0.03
44.920	beta-Caryophyllene	17.24
45.499	beta-Copaene	0.10
45.694	trans-alpha-Bergamotene	0.02
46.702	Cadina-3,5-diene	0.02
46.920	trans-beta-Ocimene	0.29
47.112	alpha-Humulene	1.44
47.382	9-epi-Caryophyllene	0.15
47.499	cis-Cadina-1(6),4-diene	0.06
48.133	10-beta-H-Cadina-1(6),4-diene	0.04
48.319	trans-Cadina-1(6),4-diene	0.18
48.730	Germacrene D	9.47
49.265	(Z,E)-alpha-Farnesene	0.75
49.370	epi-Bicyclosesquiphellandrene	0.07
49.583	Bicyclogermacrene	0.20
49.766	alpha-Murolene	0.36
50.104	(E,E)-alpha-Farnesene	0.44
50.646	gamma-Cadinene	0.34
50.771	Cubebol	0.04
50.954	delta-Cadinene	1.32
51.801	trans-Cadina-1,4-diene	0.04
52.053	alpha-Cadinene	0.09
54.412	Germacren D-4-ol	0.42
54.738	Caryophyllene oxide	0.81
55.553	Unidentified	0.05
56.347	Humulene epoxide II	0.02
56.670	1,10-di-epi-Cubenol	0.02
57.373	1-Epicubenol	0.04
58.173	tau-Cadinol	0.25
58.279	epi-alpha-Cadinol	0.34
58.426	delta-Cadinol	0.11
58.926	alpha-Cadinol	0.72
59.752	Unidentified	0.01
68.908	Phytone	0.06
74.253	Geranyl-alpha-terpinene	0.02
		100.00