

Sample Information

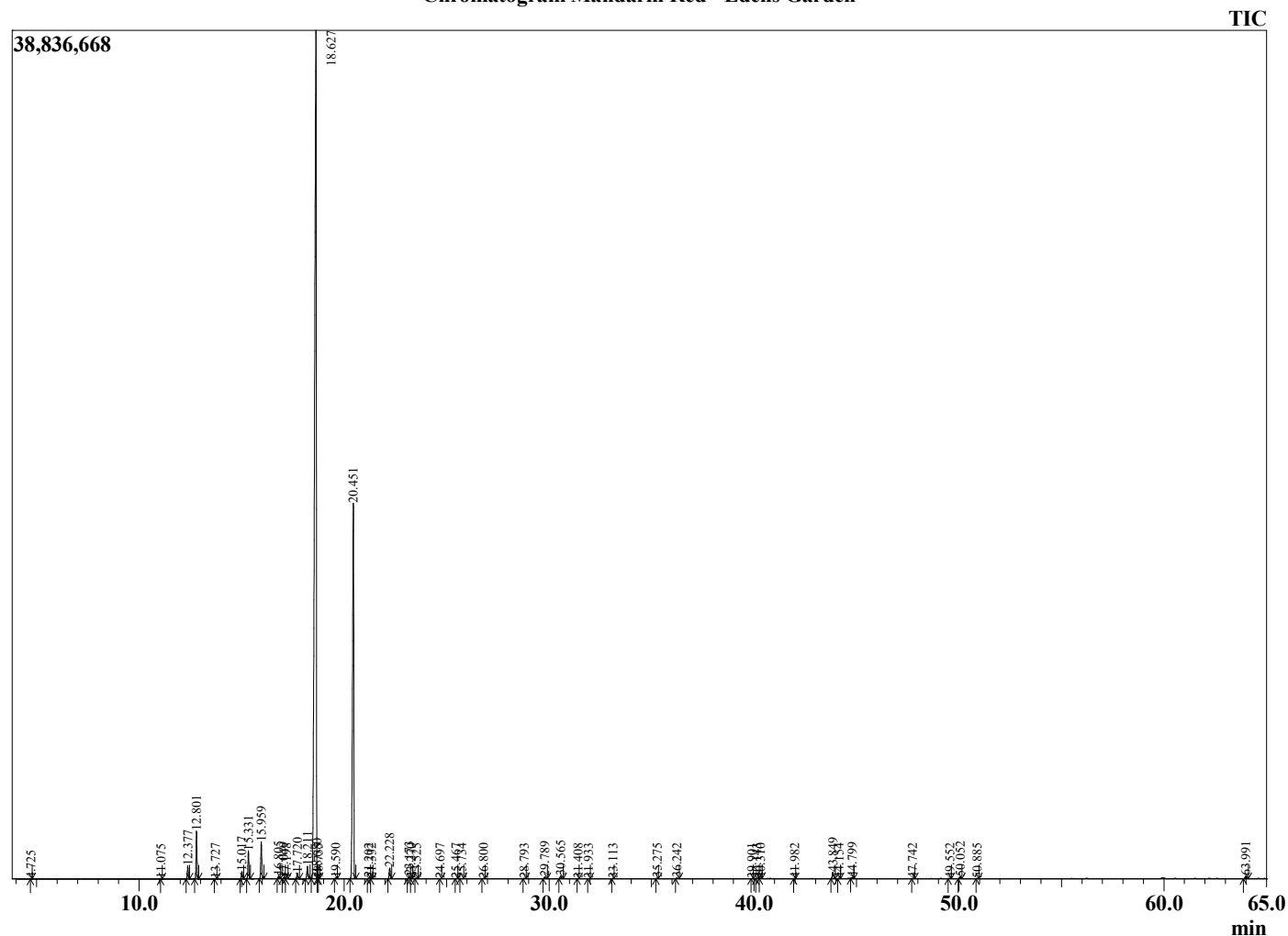
Analyzed by : Dr. Robert S. Pappas
 Analyzed : 7/28/2022 1:48:53 PM
 Sample Type : Essential Oil
 Sample Name : Mandarin Red - Edens Garden
 Sample ID : EG Lot #BB08GAL
 Injection Volume : 0.10
 Instrument ID: : GC-3



Peak Report TIC

R.Time	Name	Area%
4.725	Heptane	0.00
11.075	Heptanal	0.00
12.377	alpha-Thujene	0.55
12.801	alpha-Pinene	2.00
13.727	Camphene	0.02
15.017	Sabinene	0.33
15.331	beta-Pinene	1.26
15.959	Myrcene	1.69
16.805	Octanal	0.11
17.049	alpha-Phellandrene	0.04
17.198	delta-3-Carene	0.02
17.720	alpha-Terpinene	0.27
18.211	para-Cymene	0.68
18.627	Limonene	69.41
18.680	beta-Phellandrene	0.13
18.735	1,8-Cineole	0.01
19.590	(E)-beta-Ocimene	0.03
20.451	gamma-Terpinene	21.47
21.202	cis-Linalool oxide (furanoid)	0.05
21.332	Unidentified	0.02
22.228	Terpinolene	0.55
23.173	Linalool	0.12
23.270	cis-Sabinene hydrate	0.02
23.525	Nonanal	0.03
24.697	Unidentified	0.01
25.467	cis-Limonene oxide	0.01
25.734	trans-Limonene oxide	0.02
26.800	Citronellal	0.02
28.793	Terpinen-4-ol	0.03
29.789	alpha-Terpineol	0.10
30.565	Decanal	0.14
31.408	trans-Carveol	0.01
31.933	Citronellol	0.01
33.113	Carvone	0.01
35.275	Perillaldehyde	0.02
36.242	Thymol	0.03
39.901	Unidentified	0.00
40.143	Unidentified	0.01
40.310	Eugenol	0.02
41.982	alpha-Copaene	0.01
43.849	Methyl N-methyl anthranilate	0.36
44.154	Dodecanal	0.02
44.799	trans-beta-Caryophyllene	0.07
47.742	Dodec-2(E)-enal	0.01
49.552	alpha-Selinene	0.02
50.052	(E,E)-alpha-Farnesene	0.10
50.885	delta-Cadinene	0.01
63.991	alpha-Sinensal	0.15
		100.00

Chromatogram Mandarin Red - Edens Garden



Comments:

The analysis of this Mandarin Red - Edens Garden batch sample meets the expected chemical profile for authentic essential oil of Citrus deliciosa.

No contamination or adulteration was detected. The results provided in this GCMS quality analysis reflect the chemical composition of the oil and lot referenced above on the date of analysis.