

Sample Information

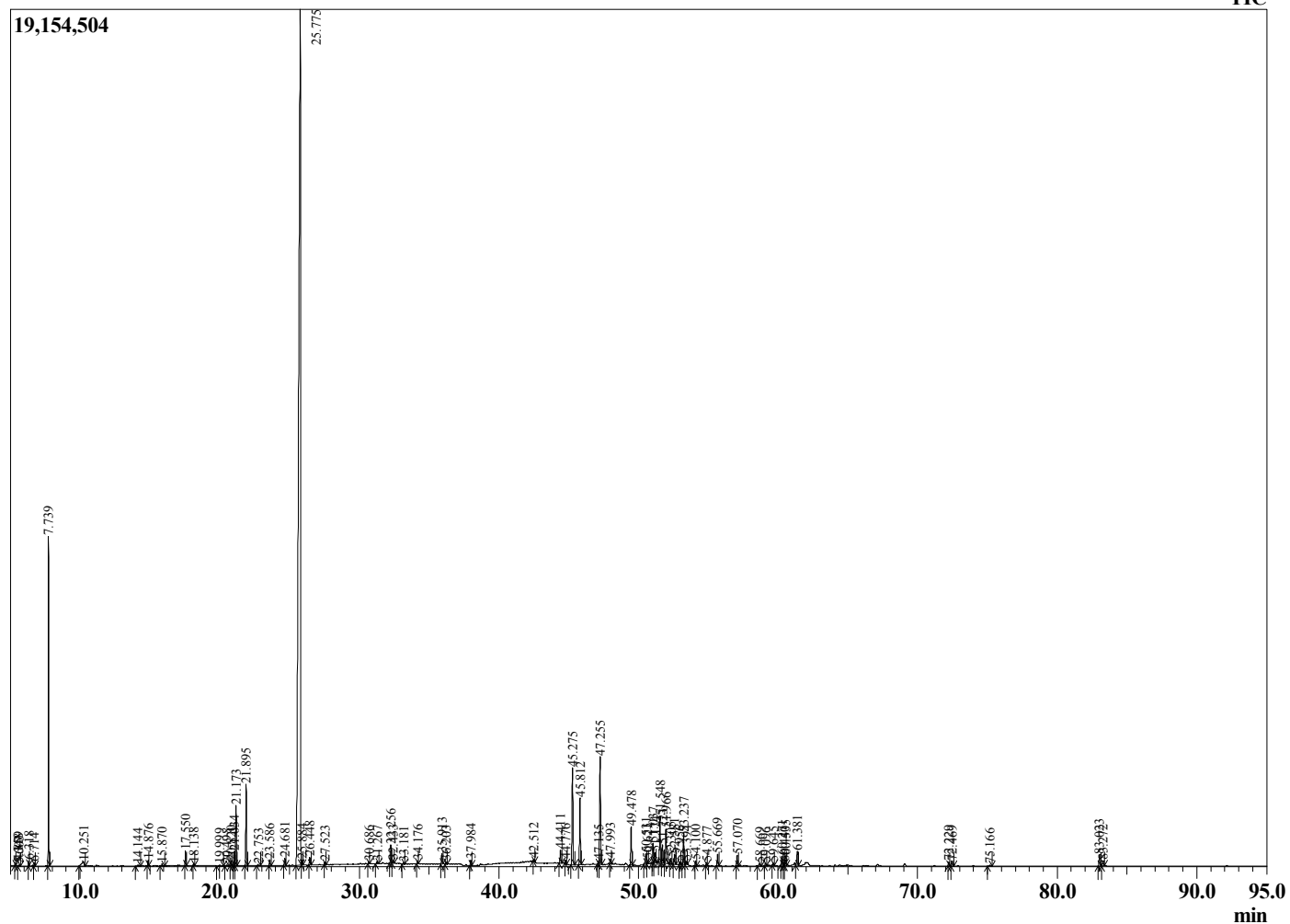
Analyzed by : Dr. Robert S. Pappas
 Analyzed : 11/3/2020 6:54:45 PM
 Sample Type : Essential Oil
 Sample Name : Magnolia Flower - Edens Garden
 Sample ID : BA29IAG
 Injection Volume : 0.10
 Instrument ID : GC-2



Peak Report TIC

R.Time	Name	Area%
4.859	Methyl propanoate	0.05
5.348	2-Methylbutanal	0.04
5.603	Methyl isobutyrate	0.02
6.318	Methyl butyrate	0.07
6.714	2-Methylbutanol	0.05
7.739	Methyl-2-methylbutyrate	6.15
10.251	2-Methylbutyric acid	0.36
14.144	Methyl hexanoate	0.03
14.876	alpha-Pinene	0.14
15.870	Camphene	0.05
17.550	beta-Pinene	0.39
18.138	Myrcene	0.06
19.999	alpha-Terpinene	0.04
20.498	para-Cymene	0.03
20.820	Limonene	0.11
21.034	1,8-Cineole	0.39
21.173	cis-beta-Ocimene	1.67
21.895	trans-beta-Ocimene	2.28
22.753	gamma-Terpinene	0.04
23.586	cis-Linalool oxide (furanoid)	0.17
24.681	trans-Linalool oxide (furanoid)	0.24
25.775	Linalool	63.79
25.884	Hotrienol	0.11
26.448	Phenethyl alcohol	0.23
27.523	allo-Ocimene	0.07
30.686	Borneol	0.07
31.267	Terpinen-4-ol	0.07
32.256	alpha-Terpineol	0.57
32.433	Estragole	0.07
33.181	Octyl acetate	0.06
34.176	Nerol	0.08
35.913	Geraniol	0.32
36.203	2-Phenethyl acetate	0.07
37.984	Unidentified	0.18
42.512	alpha-Cubebene	0.10
44.411	alpha-Copaene	0.43
44.776	cis-beta-Elemene	0.09
45.275	trans-beta-Elemene	3.34
45.812	Methyleugenol	2.21
47.135	alpha-Santalene	0.09
47.255	trans-beta-Caryophyllene	3.81
47.993	trans-alpha-Bergamotene	0.15
49.478	alpha-Humulene	1.34
50.531	Unidentified	0.40
50.621	trans-Cadina-1(6),4-diene	0.12
51.037	Germacrene D	0.69
51.174	Phenethyl-2-methylbutyrate	0.35
51.548	beta-Selinene	1.61
51.723	Methyl isoeugenol	0.64
51.966	alpha-Selinene	1.33
52.305	(E,E)-alpha-Farnesene	0.20
52.581	beta-Bisabolene	0.34
52.956	gamma-Cadinene	0.09
53.237	delta-Cadinene	1.02
53.394	Unidentified	0.10
54.100	trans-Cadina-1,4-diene	0.16
54.877	Unidentified	0.09
55.669	trans-Nerolidol	0.39
57.070	Caryophyllene oxide	0.36
58.669	Humulene epoxide II	0.08
59.096	Selina-6-en-4-ol	0.09
59.645	1-epi-Cubanol	0.08

Chromatogram Magnolia Flower - Edens Garden



Comments:

The analysis of this Magnolia flower batch sample meets the expected chemical profile for authentic essential oil of *Magnolia x alba*. No contamination or adulteration was detected.

The results provided in this GCMS quality analysis reflect the chemical composition of the oil and lot referenced above on the date of analysis.

R.Time	Name	Area%
60.271	Phenethyl caproate	0.31
60.440	tau-Cadinol	0.09
60.535	tau-Muurolol	0.35
61.381	Selina-6-en-4-ol	0.50
72.229	Unidentified	0.14
72.469	Unidentified	0.17
75.166	Methyl palmitate	0.05
83.023	Methyl linoleate	0.41
83.272	Methyl linolenate	0.20
		100.00