

Sample Information

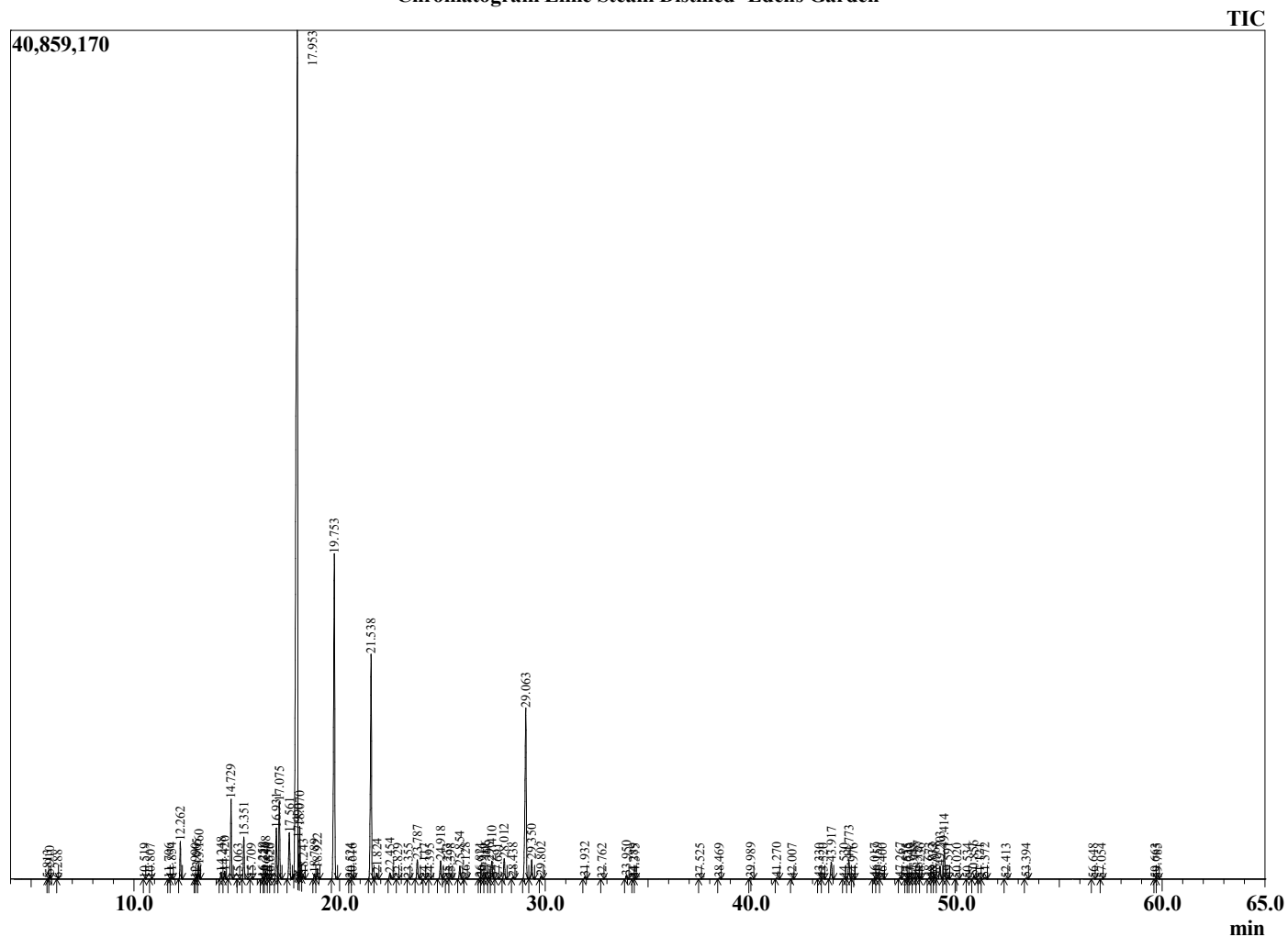
Analyzed by : Dr. Robert S. Pappas
 Analyzed : 7/29/2022 10:13:52 PM
 Sample Type : Essential Oil
 Sample Name : Lime Steam Distilled- Edens Garden
 Sample ID : EG Lot #BB09JV
 Injection Volume : 0.10
 Instrument ID : GC-4



Peak Report TIC

R.Time	Name	Area%
5.813	Limediene isomer	0.01
5.910	Limediene	0.08
6.288	Limediene isomer	0.01
10.519	Nonae	0.02
10.807	Bornylene	0.01
11.706	Tricyclene	0.01
11.854	alpha-Thujene	0.03
12.262	alpha-Pinene	1.05
12.990	Unidentified	0.01
13.065	alpha-Fenchene	0.15
13.160	Camphene	0.42
14.248	Bois de Rose oxide	0.23
14.420	Sabinene	0.24
14.729	beta-Pinene	2.43
15.063	6-Methyl hept-5-en-2-one	0.01
15.351	Myrcene	1.34
15.709	Unidentified	0.03
16.259	Pseudolimonene	0.06
16.326	Unidentified	0.03
16.408	alpha-Phellandrene	0.28
16.553	delta-3-Carene	0.02
16.620	Unidentified	0.01
16.931	1,4-Cineole	1.77
17.075	alpha-Terpinene	2.61
17.561	para-Cymene	1.81
17.953	Limonene	45.99
17.990	beta-Phellandrene	0.50
18.070	1,8-Cineole	1.17
18.243	cis-beta-Ocimene	0.08
18.789	2,2-Dimethyl-5-(1-methyl-1-propenyl)-tetrahy	0.18
18.922	trans-beta-Ocimene	0.38
19.753	gamma-Terpinene	12.76
20.524	Octanol	0.03
20.616	Pinol	0.02
21.538	Terpinolene	8.53
21.824	para-Cymenene	0.20
22.454	Linalool	0.24
22.829	Nonanal	0.01
23.355	1,3,8-para-Mentha-Triene	0.02
23.787	alpha-Fenchol	0.73
24.117	exo-Fenchol	0.01
24.395	allo-Ocimene	0.01
24.918	Terpin-3-en-1-ol	0.68
25.233	Menthatriene analogue	0.03
25.398	Unidentified	0.03
25.854	trans-beta-Terpineol	0.49
26.128	Terpineol analogue	0.04
26.821	Isoborneol	0.04
26.916	Ocimenol	0.03
27.106	cis-beta-Terpineol	0.14
27.296	delta-Terpineol	0.05
27.410	Borneol	0.72
27.691	Unidentified	0.03
28.012	Terpinen-4-ol	0.79
28.438	para-Cymen-8-ol	0.08
29.063	alpha-Terpineol	7.36
29.350	gamma-Terpineol	0.74
29.802	Decanal	0.11
31.932	Neral	0.09
32.762	Geraniol	0.02
33.950	Geranial	0.13
34.289	Decanal	0.02

Chromatogram Lime Steam Distilled- Edens Garden



Comments:

The analysis of this Lime Steam Distilled batch sample meets the expected chemical profile for authentic essential oil of Citrus aurantifolia.

No contamination or adulteration was detected. The results provided in this GCMS quality analysis reflect the chemical composition of the oil and lot referenced above on the date of analysis.

©Copyright 2022 by Essential Oil University. All rights reserved. Any publishing, copying, use, dissemination, or distribution of this report, including online, without the express written permission of Essential Oil University is strictly prohibited.

R.Time	Name	Area%
34.375	cis-Ascrisol glycol	0.01
37.525	Unidentified	0.01
38.469	delta-Elemene	0.03
39.989	Neryl acetate	0.07
41.270	Geranyl acetate	0.05
42.007	beta-Elemene	0.03
43.330	Dodecanal	0.03
43.520	cis-alpha-Bergamotene	0.03
43.917	beta-Caryophyllene	0.74
44.530	gamma-Elemene	0.02
44.773	trans-alpha-Bergamotene	0.80
44.976	Unidentified	0.03
46.017	trans-beta-Farnesene	0.04
46.159	alpha-Humulene	0.06
46.400	beta-Santalene	0.04
47.267	Selina-4,11-diene	0.07
47.555	gamma-Curcumene	0.01
47.635	alpha-Murolene	0.01
47.749	Germacrene D	0.01
47.948	Unidentified	0.07
48.127	delta-Selinene	0.16
48.236	beta-Selinene	0.03
48.673	alpha-Selinene	0.05
48.832	alpha-Murolene	0.01
48.968	cis-alpha-Bisabolene	0.08
49.203	trans,trans-alpha-Farnesene	0.56
49.414	beta-Bisabolene	1.29
49.591	cis-gamma-Bisabolene	0.05
50.020	delta-Cadinene	0.04
50.534	trans-gamma-Bisabolene	0.01
50.856	alpha-Maaliene	0.15
51.121	Selina-4(15),7(11)-diene	0.03
51.372	trans-alpha-Bisabolene	0.08
52.413	Germacrene B	0.03
53.394	Caryophyllene alcohol	0.04
56.648	gamma-Eudesmol	0.03
57.054	Unidentified	0.01
59.663	epi-alpha-Bisabolol	0.01
59.785	alpha-Bisabolol	0.02
		100.00