

Sample Information

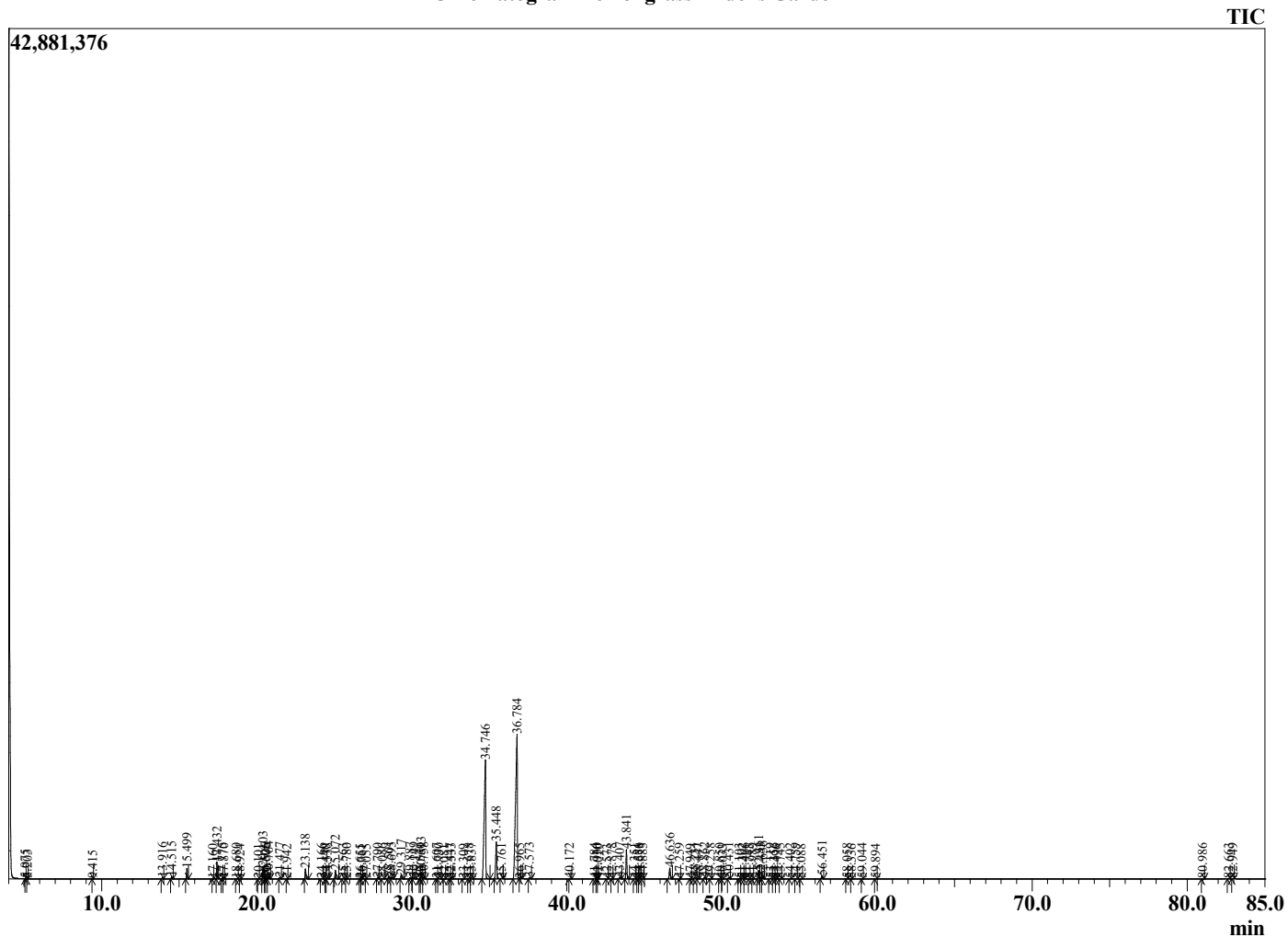
Analyzed by : Dr. Robert S. Pappas
 Analyzed : 7/28/2022 8:44:18 PM
 Sample Type : Essential Oil
 Sample Name : Lemongrass - Edens Garden
 Sample ID : EG Lot #BB12GAJ
 Injection Volume : 0.10
 Instrument ID : GC-2



Peak Report TIC

R.Time	Name	Area%
5.075	3-Methylbutanal	0.01
5.203	2-Methylbutanal	0.01
9.415	Unidentified	0.01
13.916	Tricyclene	0.16
14.515	alpha-Pinene	0.24
15.499	Camphene	1.24
17.160	beta-Pinene	0.02
17.432	6-Methyl hept-5-en-2-one	1.98
17.775	Myrcene	0.05
17.870	dehydro-1,8-Cineole	0.06
18.680	Octanal	0.04
18.924	alpha-Phellandrene	0.01
20.101	para-Cymene	0.01
20.403	Limonene	1.53
20.526	beta-Phellandrene	0.04
20.606	1,8-Cineole	0.03
20.764	cis-beta-Ocimene	0.26
21.477	trans-beta-Ocimene	0.15
21.942	Bergamal	0.02
23.138	4-Nonanone	1.29
24.166	Terpinolene	0.06
24.440	4-Nonanol	0.01
24.538	Rosefuran	0.12
25.072	Linalool	1.23
25.563	alpha-Pinene oxide	0.10
25.780	Unidentified	0.02
26.655	Unidentified	0.01
26.761	Unidentified	0.01
27.055	Unidentified	0.01
27.790	Epiphocitral A	0.13
28.086	exo-Isocitral	0.07
28.501	trans-Chrysanthemal	0.28
28.695	Citronellal	0.21
29.317	cis-Chrysanthenol	0.56
29.887	Isoborneol	0.16
30.149	Borneol	0.21
30.530	Unidentified	0.02
30.613	Isogeranial	0.95
30.758	Unidentified	0.18
31.607	Unidentified	0.04
31.730	alpha-Terpineol	0.16
32.081	cis-Piperitol	0.02
32.447	Decanal	0.09
32.533	Unidentified	0.07
33.309	Unidentified	0.02
33.678	Nerol	0.11
33.837	Citronellol	0.08
34.746	Neral	29.64
35.448	Geranial	6.59
35.761	Piperitone	0.05
36.784	Geranial	40.65
36.965	4-Undecanone	0.02
37.573	trans-Carvone oxide	0.16
40.172	Methyl geranate	0.03
41.784	Neranic acid	0.05
41.930	alpha-Cubebene	0.03
42.010	Citronellyl acetate	0.02
42.573	Neryl acetate	0.02
42.878	Unidentified	0.01
43.407	Cyclosativene	0.29
43.841	Geranyl acetate	4.39
44.351	beta-Bourbonene	0.03

Chromatogram Lemongrass - Edens Garden



Comments:

The analysis of this Lemongrass batch sample meets the expected chemical profile for authentic essential oil of *Cymbopogon flexuosus*. No contamination or adulteration was detected. The results provided in this GCMS quality analysis reflect the chemical composition of the oil and lot referenced above on the date of analysis.

R.Time	Name	Area%
44.586	beta-Cubebene	0.04
44.678	beta-Elemene	0.13
44.883	Sativene	0.02
46.636	beta-Caryophyllene	1.76
47.259	beta-Copaene	0.01
47.949	Guaia-6,9-diene	0.01
48.231	trans-Isoeugenol	0.27
48.447	Cadina-3,5-diene	0.05
48.862	alpha-Humulene	0.18
49.258	Unidentified	0.03
49.850	trans-Cadina-1(6),4-diene	0.03
50.033	Unidentified	0.01
50.431	Germacrene D	0.18
51.103	gamma-Amorphene	0.03
51.302	epi-Cubedol	0.12
51.466	alpha-Murolene	0.03
51.743	Unidentified	0.01
51.989	alpha-Chamigrene	0.01
52.361	gamma-Cadinene	1.33
52.483	Cubedol	0.22
52.636	delta-Cadinene	0.37
53.119	trans-gamma-Bisabolene	0.13
53.356	Cubedol isomer	0.02
53.496	trans-Cadina-1,4-diene	0.02
53.745	alpha-Cadinene	0.04
54.402	alpha-Elemol	0.05
54.759	Geranyl butyrate	0.06
55.088	Germacrene B	0.02
56.451	Caryophyllene oxide	0.50
58.058	Humulene epoxide II	0.04
58.336	Unidentified	0.01
59.044	1-epi-Cubenol	0.03
59.894	Cubenol	0.02
80.986	Unidentified	0.06
82.663	Unidentified	0.05
82.949	Unidentified	0.05
		100.00