

Sample Information

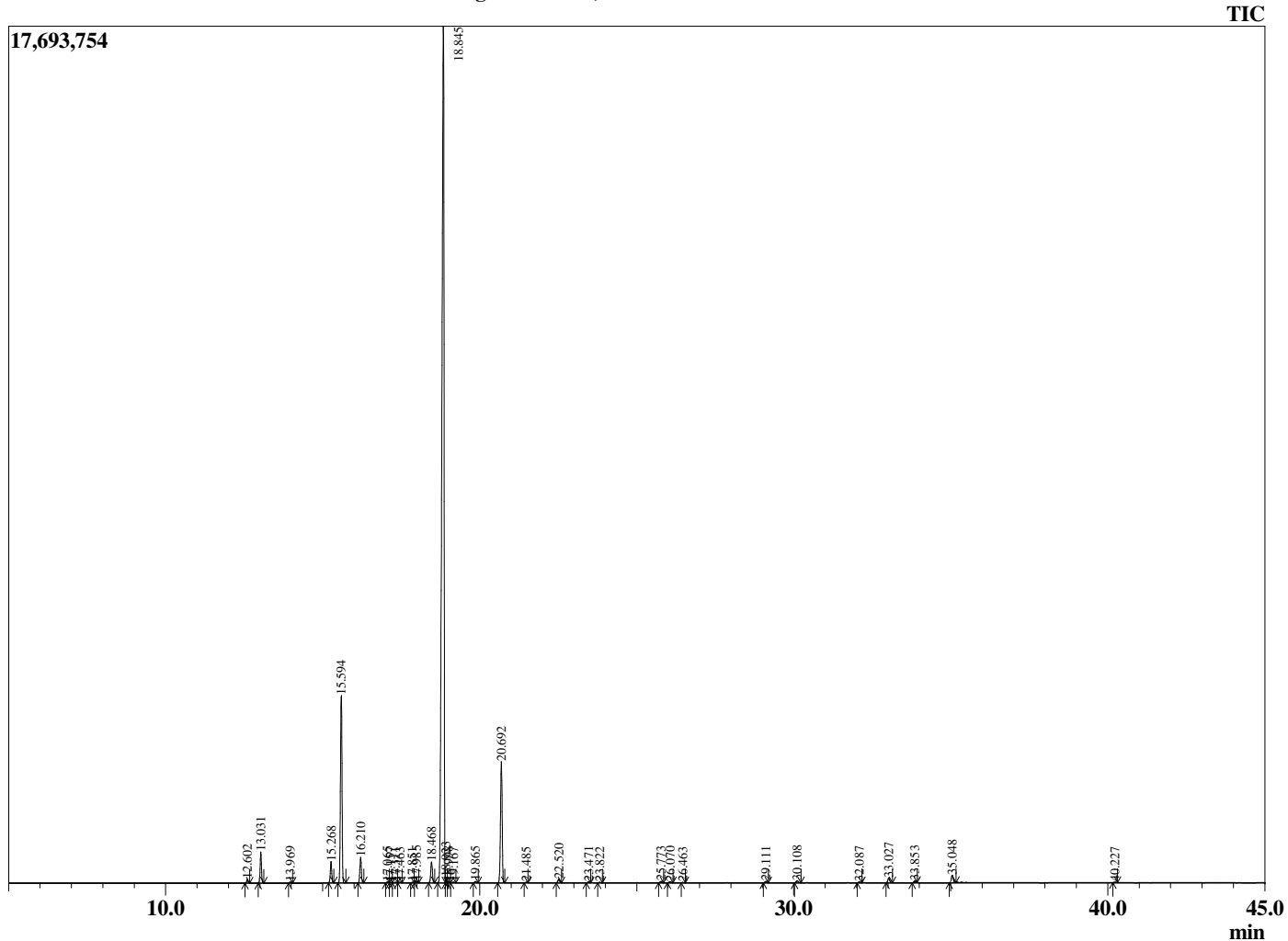
Analyzed by : Dr. Robert S. Pappas  
 Analyzed : 8/29/2020 12:54:58 AM  
 Sample Type : Essential Oil  
 Sample Name : Lemon, Steam Distilled - Edens Garden  
 Sample ID : BA08GK  
 Injection Volume : 0.10  
 Instrument ID : GC-3



Peak Report TIC

R.Time	Name	Area%
12.602	alpha-Thujene	0.20
13.031	alpha-Pinene	1.66
13.969	Camphene	0.06
15.268	Sabinene	1.20
15.594	beta-Pinene	11.21
16.210	Myrcene	1.46
17.065	Octanal	0.05
17.157	Pseudolimonene	0.01
17.311	alpha-Phellandrene	0.03
17.463	delta-3-Carene	0.03
17.851	1,4-Cineole	0.02
17.985	alpha-Terpinene	0.10
18.468	para-Cymene	1.33
18.845	Limonene	72.57
18.923	beta-Phellandrene	0.24
18.998	1,8-Cineole	0.06
19.167	cis-beta-Ocimene	0.04
19.865	trans-beta-Ocimene	0.08
20.692	gamma-Terpinene	7.71
21.485	trans-Sabinene hydrate	0.03
22.520	Terpinolene	0.24
23.471	Linalool	0.07
23.822	Nonanal	0.03
25.773	cis-Limonene oxide	0.09
26.070	trans-Limonene oxide	0.08
26.463	Unidentified	0.02
29.111	Terpinen-4-ol	0.10
30.108	alpha-Terpineol	0.16
32.087	Nerol	0.05
33.027	Neral	0.35
33.853	Geraniol	0.11
35.048	Geranial	0.57
40.227	Limonene glycol	0.03
		100.00

Chromatogram Lemon, Steam Distilled - Edens Garden



Comments:

The analysis of this Lemon, Steam Distilled batch sample meets the expected chemical profile for authentic essential oil of

*Citrus limon*. No contamination or adulteration was detected.

The results provided in this GCMS quality analysis reflect the chemical composition of the oil and lot referenced above on the date of analysis.