

Sample Information

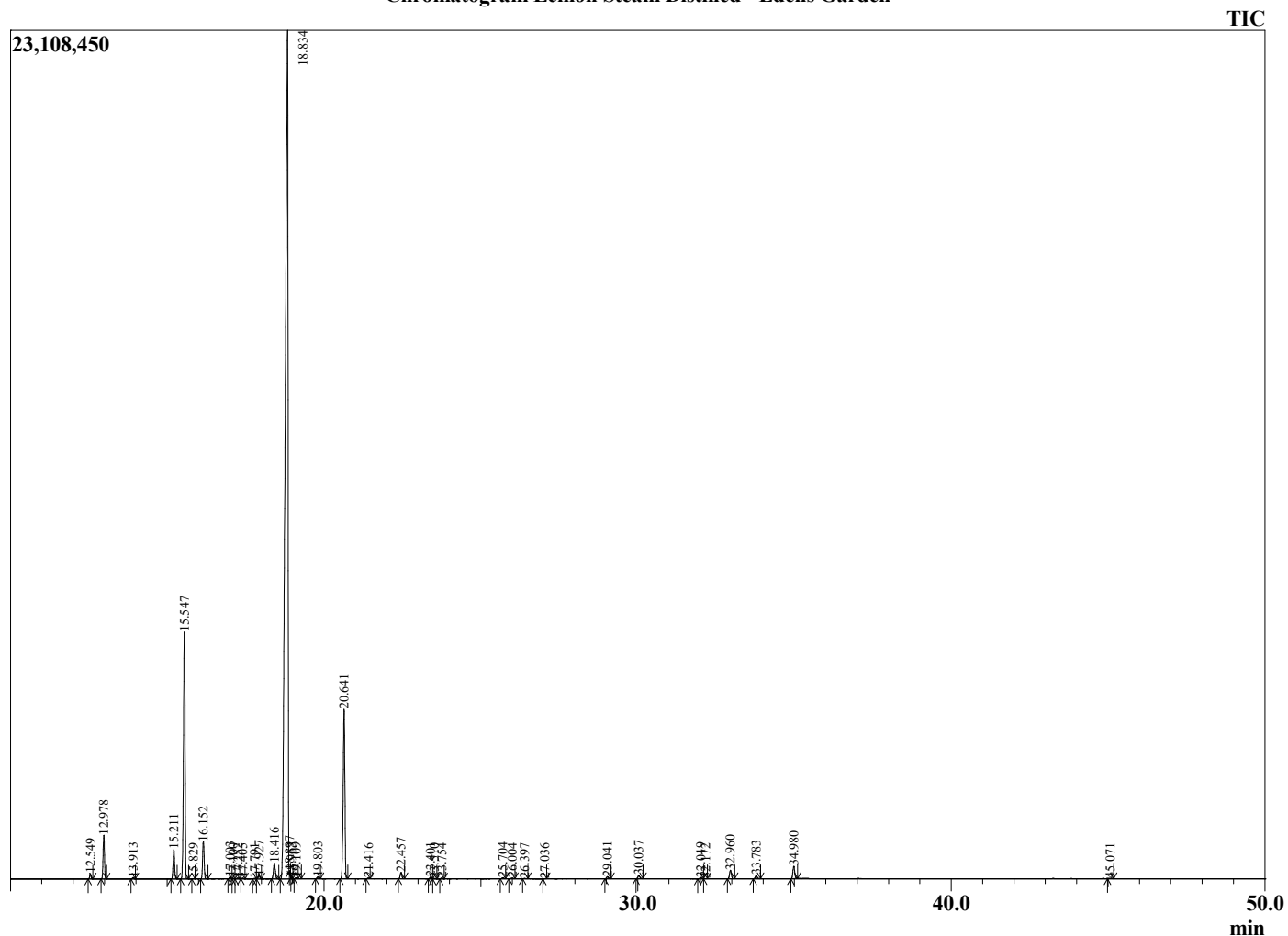
Analyzed by : Dr. Robert S. Pappas
 Analyzed : 7/29/2022 3:35:48 PM
 Sample Type : Essential Oil
 Sample Name : Lemon Steam Distilled - Edens Garden
 Sample ID : EG Lot #BB29HH
 Injection Volume : 0.10
 Instrument ID : GC-3



Peak Report TIC

R.Time	Name	Area%
12.549	alpha-Thujene	0.21
12.978	alpha-Pinene	1.78
13.913	Camphene	0.06
15.211	Sabinene	1.30
15.547	beta-Pinene	11.60
15.829	Unidentified	0.01
16.152	Myrcene	1.67
17.003	Octanal	0.09
17.100	Pseudolimonene	0.02
17.252	alpha-Phellandrene	0.04
17.405	delta-3-Carene	0.03
17.791	1,4-Cineole	0.03
17.927	alpha-Terpinene	0.15
18.416	para-Cymene	0.87
18.834	Limonene	70.94
18.897	beta-Phellandrene	0.02
18.963	1,8-Cineole	0.01
19.109	cis-beta-Ocimene	0.04
19.803	trans-beta-Ocimene	0.09
20.641	gamma-Terpinene	8.67
21.416	trans-Sabinene hydrate	0.04
22.457	Terpinolene	0.32
23.401	Linalool	0.08
23.510	cis-Sabinene hydrate	0.02
23.754	Nonanal	0.04
25.704	cis-Limonene oxide	0.05
26.004	trans-Limonene oxide	0.04
26.397	Unidentified	0.02
27.036	Citronellal	0.01
29.041	Terpinen-4-ol	0.12
30.037	alpha-Terpineol	0.20
32.019	Nerol	0.07
32.172	Unidentified	0.01
32.960	Neral	0.46
33.783	Geraniol	0.17
34.980	Geranial	0.68
45.071	beta-Caryophyllene	0.03
		100.00

Chromatogram Lemon Steam Distilled - Edens Garden



Comments:

The analysis of this Lemon Steam Distilled batch sample meets the expected chemical profile for authentic essential oil of Citrus limon.

No contamination or adulteration was detected. The results provided in this GCMS quality analysis reflect the chemical composition of the oil and lot referenced above on the date of analysis.