

Sample Information

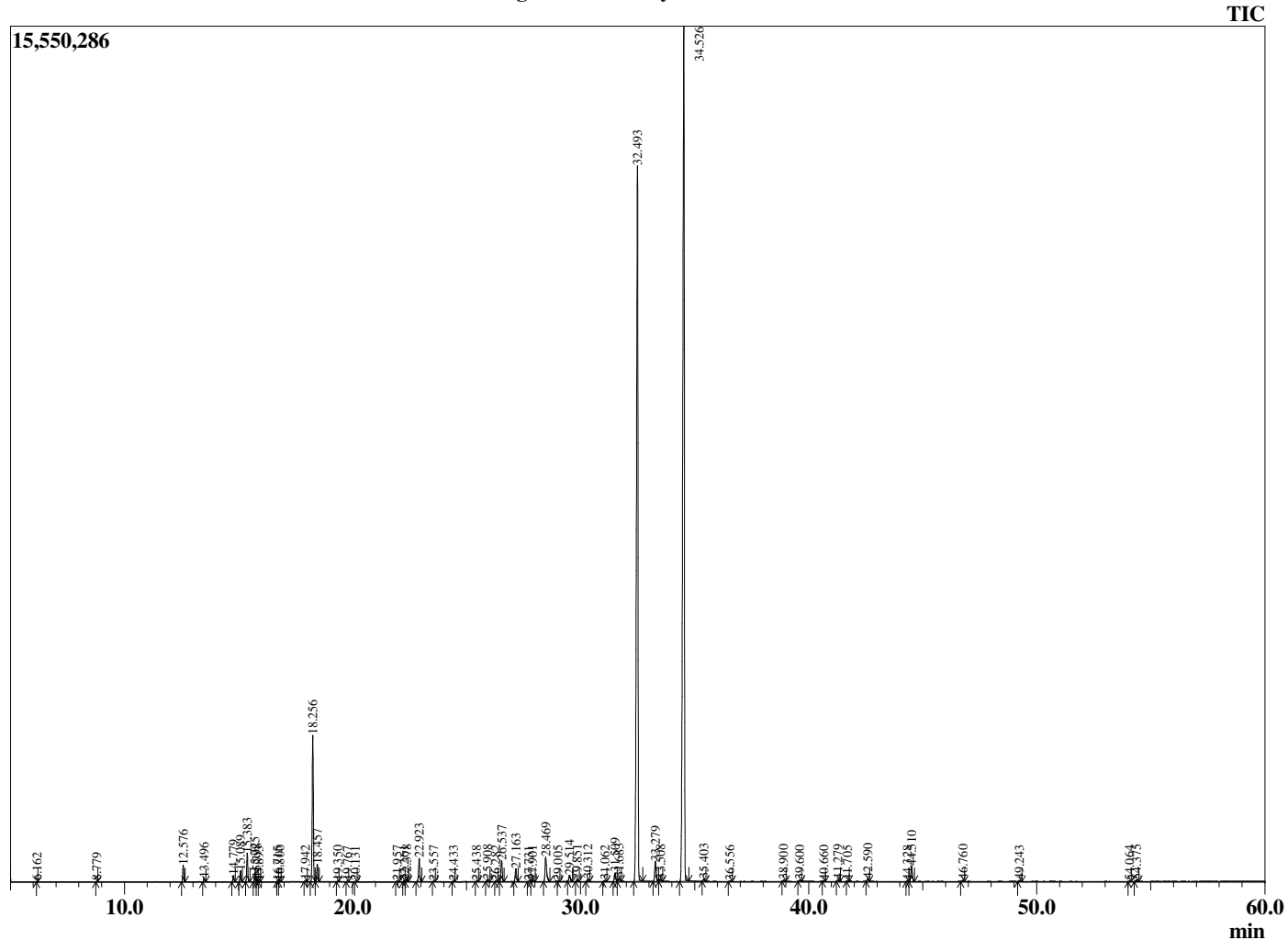
Analyzed by : Dr. Robert S. Pappas  
 Analyzed : 5/11/2018 10:37:01 AM  
 Sample Type : Essential Oil  
 Sample Name : Lemon Myrtle - Edens Garden  
 Sample ID : AH25DC  
 Injection Volume : 0.10  
 Instrument ID : GC-3



Peak Report TIC

R.Time	Name	Area%
6.162	Methyl 2-methylbutyrate	0.01
8.779	3-cis-Hexenol	0.01
12.576	alpha-Pinene	0.55
13.496	Camphene	0.13
14.779	Sabinene	0.22
15.089	beta-Pinene	0.39
15.383	6-Methyl hept-5-en-2-one	1.03
15.725	Myrcene	0.36
15.798	dehydro-1,8-Cineole	0.11
15.893	Sulcatol	0.02
16.715	Unidentified	0.01
16.800	alpha-Phellandrene	0.02
17.942	para-Cymene	0.05
18.256	Limonene	5.59
18.457	1,8-cineole	0.68
19.350	trans-beta-Ocimene	0.02
19.767	Bergamal	0.01
20.131	gamma-Terpinene	0.02
21.957	Terpinolene	0.04
22.261	para-Cymenene	0.03
22.378	Rosefuran	0.09
22.923	Linalool	0.98
23.557	Unidentified	0.02
24.433	trans-para-Mentha-2,8-dienol	0.03
25.438	Unidentified	0.03
25.908	exo-Isocitral	0.09
26.282	Unidentified	0.02
26.537	Citronellal	0.91
27.163	cis-Chrysanthenol	0.57
27.731	Isoborneol	0.03
27.901	Borneol	0.08
28.469	trans-Isocitral	1.29
29.005	Unidentified	0.02
29.514	alpha-Terpineol	0.29
29.851	cis-Piperitol	0.09
30.312	Unidentified	0.10
31.062	trans-Piperitol	0.05
31.509	Nerol	0.39
31.683	Citronellol	0.14
32.493	Neral	36.34
33.279	Geraniol	0.94
33.508	Piperitone	0.09
34.526	Geranial	46.58
35.403	trans-Carvone oxide	0.11
36.556	Unidentified	0.03
38.900	Unidentified	0.06
39.600	Neric acid	0.06
40.660	Unidentified	0.03
41.279	Unidentified	0.08
41.705	alpha-Copaene	0.02
42.590	beta-Elemene	0.11
44.328	Unidentified	0.02
44.510	beta-Caryophyllene	0.75
46.760	alpha-humulene	0.07
49.243	Bicyclogermacrene	0.05
54.064	Spathulenol	0.02
54.375	Caryophyllene oxide	0.09
		100.00

Chromatogram Lemon Myrtle - Edens Garden



Comments:

The analysis of this Lemon Myrtle batch sample meets the expected chemical profile for authentic essential oil of *Backhousia citriodora*. No contamination or adulteration was detected.