

Sample Information

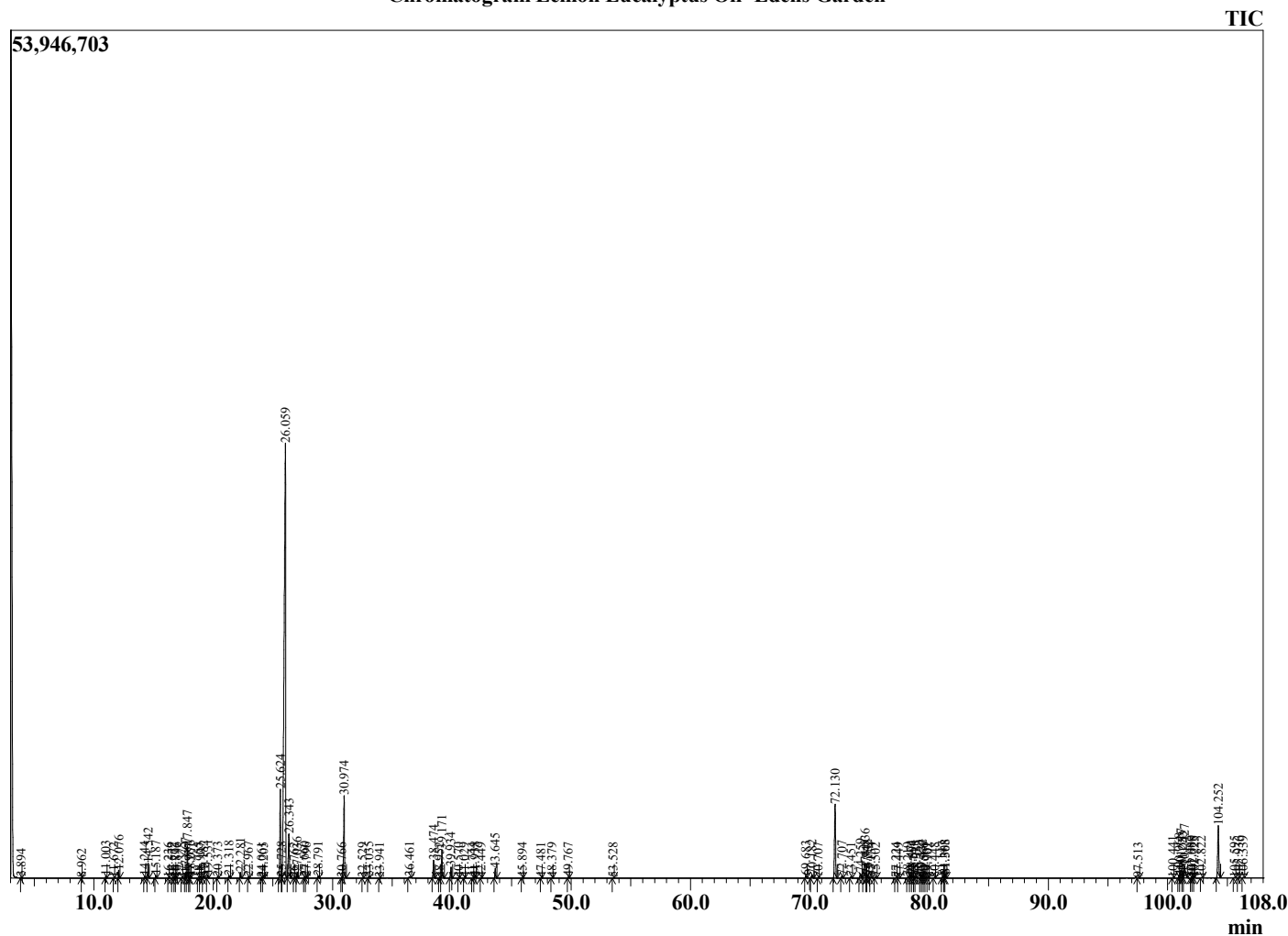
Analyzed by : Dr. Robert S. Pappas  
 Analyzed : 7/13/2022 12:09:47 AM  
 Sample Type : Essential Oil  
 Sample Name : Lemon Eucalyptus Oil- Edens Garden  
 Sample ID : EG Lot #BB17JU  
 Injection Volume : 0.10  
 Instrument ID : GC-2



Peak Report TIC

R.Time	Name	Area%
3.894	3-Methylbutanal	0.02
8.962	Unidentified	0.01
11.003	Isobutyl isobutyrate	0.10
11.672	alpha-Thujene	0.03
12.076	alpha-Pinene	0.35
14.244	Sabinene	0.08
14.542	beta-Pinene	0.70
15.187	Myrcene	0.13
16.236	alpha-Phellandrene	0.01
16.572	Isopentyl isobutyrate	0.04
16.777	2-Methylbutyl isobutyrate	0.02
16.896	alpha-Terpinene	0.02
17.375	para-Cymene	0.04
17.667	Limonene	0.25
17.847	1,8-Cineole	1.64
17.987	Unidentified	0.05
18.076	cis-beta-Ocimene	0.11
18.755	trans-beta-Ocimene	0.04
18.907	Unidentified	0.02
19.182	Melonal	0.11
19.531	gamma-Terpinene	0.17
20.373	para-Mentha-3,8-diene	0.06
21.318	Terpinolene	0.13
22.281	Linalool	0.30
22.967	cis-Rose oxide	0.09
24.061	trans-Rose oxide	0.04
24.205	Citronellol	0.04
25.624	Neoisopulegol	5.82
25.728	para-Menth-3-en-8-ol	0.06
26.059	Citronellal	55.55
26.343	Isopulegol	3.82
26.762	Isomenthone	0.01
27.036	Isopulegol	0.32
27.660	Neoisopulegol	0.08
27.796	Terpinen-4-ol	0.04
28.791	alpha-Terpineol	0.10
30.766	Nerol	0.02
30.974	Citronellol	5.23
32.529	Geraniol	0.03
33.035	Methyl citronellate	0.08
33.941	Isopulegyl acetate	0.02
36.461	Citronellic acid	0.12
38.474	Citriodiol	1.11
38.952	alpha-Terpinyl acetate	0.02
39.171	Citronellyl acetate	1.72
39.934	Citriodiol isomer	0.68
40.570	Citriodiol isomer	0.02
41.029	Geranyl acetate	0.02
41.744	beta-Elemene	0.02
41.938	Unidentified	0.10
42.449	Methyleugenol	0.02
43.645	beta-Caryophyllene	0.61
45.894	alpha-Humulene	0.04
47.481	Germacrene D	0.03
48.379	Bicyclogermacrene	0.03
49.767	delta-Cadinene	0.05
53.528	Caryophyllene oxide	0.03
69.683	Unidentified	0.16
70.182	Unidentified	0.23
70.707	Unidentified	0.03
72.130	Citriodiol acetate	6.56
72.707	Citriodiol acetate isomer	0.14

Chromatogram Lemon Eucalyptus Oil- Edens Garden



Comments:

The analysis of this Lemon Eucalyptus Oil batch sample meets the expected chemical profile for authentic essential oil of Eucalyptus citriodora.

No contamination or adulteration was detected. The results provided in this GCMS quality analysis reflect the chemical composition of the oil and lot referenced above on the date of analysis.

R.Time	Name	Area%
73.451	Citriodiol acetate isomer	0.10
74.259	Unidentified	0.36
74.636	Citriodiol acetate isomer	1.67
74.748	Citriodiol acetate isomer	0.16
74.832	Citriodiol acetate isomer	0.20
75.134	Citriodiol acetate isomer	0.08
75.502	Unidentified	0.07
77.224	Citriodiol acetate isomer	0.04
77.449	Unidentified	0.03
78.219	Unidentified	0.05
78.471	Citriodiol acetate isomer	0.25
78.594	Unidentified	0.23
78.741	Citriodiol acetate isomer	0.04
78.925	Unidentified	0.14
79.324	Unidentified	0.20
79.432	Unidentified	0.21
79.566	Citriodiol acetate isomer	0.04
79.761	Citriodiol acetate isomer	0.05
79.902	Citriodiol acetate isomer	0.03
80.448	Unidentified	0.05
81.147	Unidentified	0.13
81.303	Unidentified	0.20
81.368	Unidentified	0.17
97.513	Citriodiol acetate isomer	0.04
100.441	Unidentified	0.02
100.968	Unidentified	0.21
101.117	Unidentified	0.90
101.253	Pseudophytol analogue	0.41
101.427	Citriodiol acetate isomer	1.36
101.980	Unidentified	0.02
102.098	Citriodiol acetate isomer	0.07
102.225	Unidentified	0.02
102.822	Citriodiol acetate isomer	0.03
104.252	Unidentified	4.81
105.595	Citriodiol acetate isomer	0.03
105.936	Unidentified	0.03
106.339	Unidentified	0.04
		100.00