

Sample Information

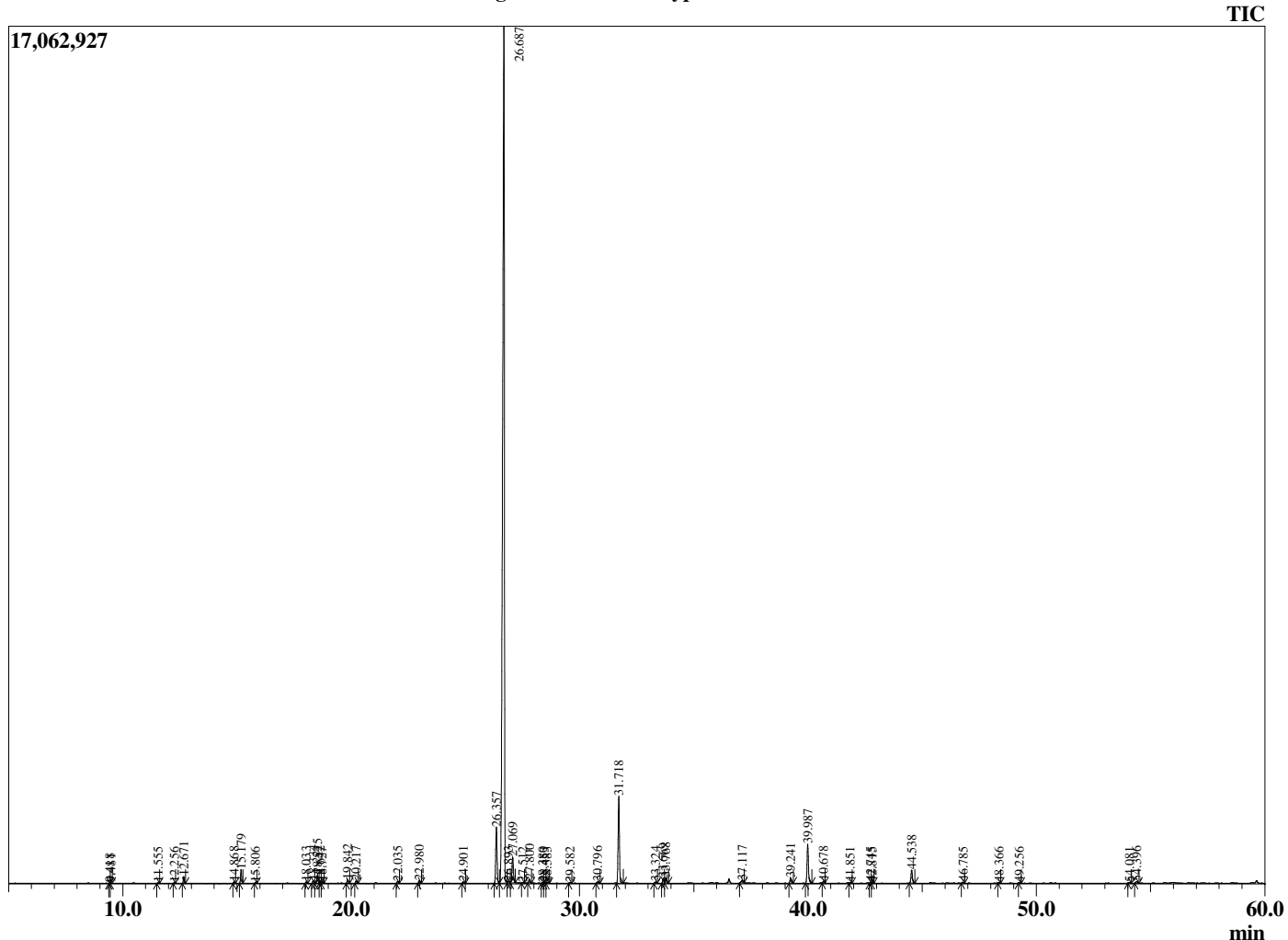
Analyzed by : Dr. Robert S. Pappas  
 Analyzed : 9/6/2019 4:27:27 PM  
 Sample Type : Essential Oil  
 Sample Name : Lemon Eucalyptus - Edens Garden  
 Sample ID : AI24FA  
 Injection Volume : 0.10  
 Instrument ID : GC-4



Peak Report TIC

R.Time	Name	Area%
9.418	Unidentified	0.02
9.481	Unidentified	0.03
11.555	Isobutyl isobutyrate	0.05
12.256	alpha-Thujene	0.03
12.671	alpha-Pinene	0.34
14.868	Sabinene	0.07
15.179	beta-Pinene	0.76
15.806	Myrcene	0.05
18.033	para-Cymene	0.09
18.334	Limonene	0.17
18.525	1,8-Cineole	0.55
18.642	Unidentified	0.11
18.727	cis-beta-Ocimene	0.07
19.842	2,6-Dimethyl-5-heptenal (Melonal)	0.22
20.217	gamma-Terpinene	0.15
22.035	Terpinolene	0.13
22.980	Linalool	0.18
24.901	Unidentified	0.08
26.357	Neoisopulegol	3.91
26.687	Citronellal	78.45
26.893	Menthone	0.15
27.069	Isopulegol	1.97
27.512	Isomenthone	0.04
27.800	Isopulegol	0.24
28.380	Menthol	0.05
28.453	Neoisopulegol	0.07
28.583	Terpinen-4-ol	0.06
29.582	alpha-Terpineol	0.07
30.796	Unidentified	0.14
31.718	Citronellol	5.91
33.324	Geraniol	0.08
33.669	Unidentified isomer 1	0.33
33.768	Unidentified isomer 1	0.40
37.117	Citronellic acid	0.22
39.241	Citriodiol	0.34
39.987	Citronellyl acetate	2.88
40.678	Citriodiol isomer	0.11
41.851	Geranyl acetate	0.07
42.745	(Z)-Jasmone	0.06
42.815	Phenethyl isobutyrate	0.04
44.538	beta-Caryophyllene	0.98
46.785	alpha-Humulene	0.07
48.366	Germacrene D	0.04
49.256	Bicyclogermacrene	0.03
54.081	Spathulenol	0.06
54.396	Caryophyllene oxide	0.14
		100.00

Chromatogram Lemon Eucalyptus - Edens Garden



Comments:

The analysis of this Lemon Eucalyptus batch sample meets the expected chemical profile for authentic essential oil of *Eucalyptus citriodora*. No contamination or adulteration was detected.