

Sample Information

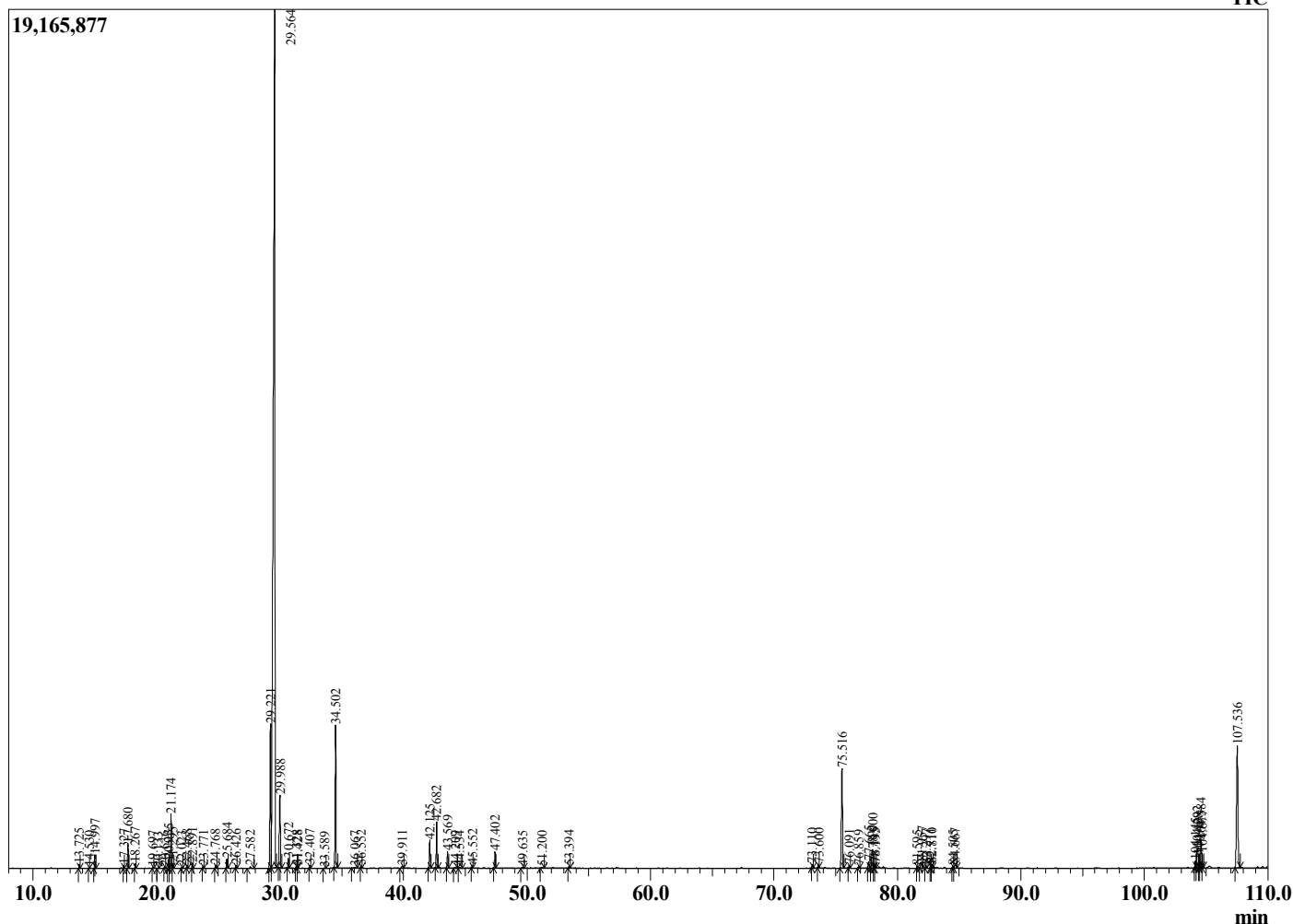
Analyzed by : Dr. Robert S. Pappas
 Analyzed : 10/17/2020 3:32:48 AM
 Sample Type : Essential Oil
 Sample Name : Lemon Eucalyptus - Edens Garden
 Sample ID : BA29IAE
 Injection Volume : 0.10
 Instrument ID : GC-2



Peak Report TIC

R.Time	Name	Area%
13.725	Isobutyl isobutyrate	0.09
14.530	alpha-Thujene	0.02
14.997	alpha-Pinene	0.33
17.327	Sabinene	0.08
17.680	beta-Pinene	0.66
18.267	Myrcene	0.11
19.697	Isoamyl isobutyrate	0.03
20.133	alpha-Terpinene	0.02
20.636	para-Cymene	0.03
20.955	Limonene	0.22
21.174	1,8-Cineol	1.55
21.295	(Z)-beta-Ocimene	0.15
22.023	(E)-beta-Ocimene	0.03
22.468	Bergamal	0.09
22.891	gamma-Terpinene	0.14
23.771	Isoterpinolene	0.05
24.768	Terpinolene	0.11
25.684	Linalool	0.28
26.426	cis-Rose oxide	0.07
27.582	trans-Rose oxide	0.08
29.221	Isopulegol	5.27
29.564	Citronellal	59.48
29.988	Neoisopulegol	3.29
30.672	Isoisopulegol	0.29
31.328	Neoisoisopulegol	0.06
31.428	Terpinen-4-ol	0.03
32.407	alpha-Terpineol	0.08
33.589	Unidentified	0.02
34.502	Citronellol	5.01
36.067	Geraniol	0.04
36.552	Methyl citronellate	0.06
39.911	Citronellic acid	0.09
42.125	Citriodiol I	0.98
42.682	Citronellyl acetate	1.44
43.569	Citriodiol II	0.56
44.209	Unidentified	0.03
44.534	Geranyl acetate	0.04
45.552	Unidentified	0.07
47.402	trans-beta-Caryophyllene	0.53
49.635	alpha-Humulene	0.04
51.200	Germacrene D	0.03
53.394	delta-Cadinene	0.04
73.110	Unidentified	0.11
73.600	Unidentified	0.12
75.516	Citriodiol acetal I	4.74
76.091	Unidentified	0.09
76.859	Unidentified	0.06
77.665	Unidentified	0.24
78.000	Citriodiol acetal II	1.12
78.115	Unidentified	0.12
78.195	Unidentified	0.13
81.595	Unidentified	0.03
81.957	Unidentified	0.31
82.297	Unidentified	0.08
82.711	Unidentified	0.12
82.810	Unidentified	0.13
84.505	Unidentified	0.07
84.667	Unidentified	0.23
104.145	Unidentified	0.25
104.292	Unidentified	1.16
104.408	Unidentified	0.46
104.584	Unidentified	1.22

Chromatogram Lemon Eucalyptus - Edens Garden



Comments:

The analysis of this Lemon Eucalyptus batch sample meets the expected chemical profile for authentic essential oil of *Eucalyptus citriodora*. No contamination or adulteration was detected. The results provided in this GCMS quality analysis reflect the chemical composition of the oil and lot referenced above on the date of analysis.

R.Time	Name	Area%
104.677	Unidentified	0.47
107.536	Unidentified	7.12
		100.00