

Sample Information

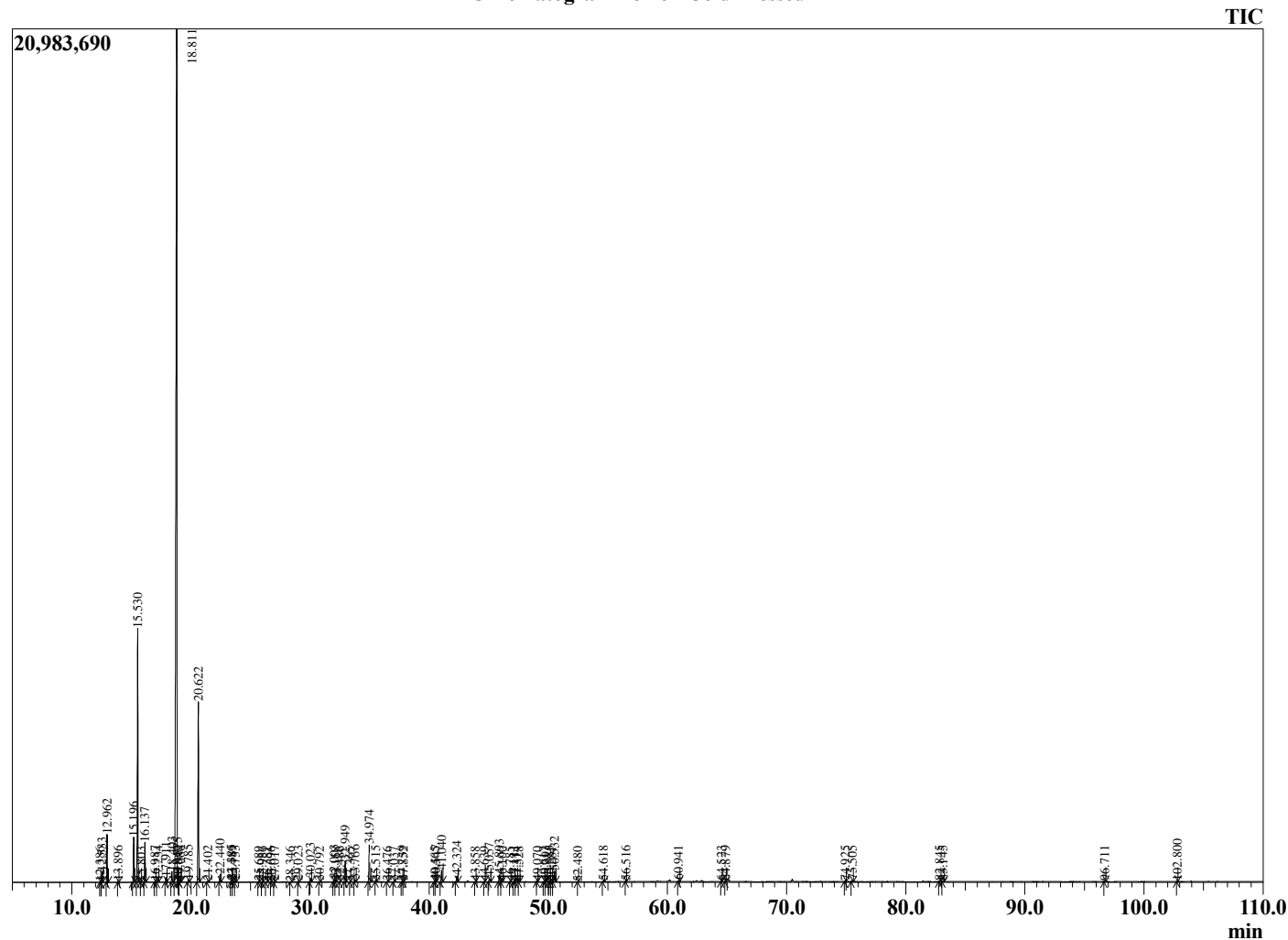
Analyzed by : Dr. Robert S. Pappas
 Analyzed : 03/13/2021 5:39:23 AM
 Sample Type : Essential Oil
 Sample Name : Lemon Cold Pressed
 Sample ID : BA24HA
 Injection Volume : 0.10
 Instrument ID: : GC-3



Peak Report TIC

R.Time	Name	Area%
12.386	Tricyclene	0.01
12.533	alpha-Thujene	0.39
12.962	alpha-Pinene	1.89
13.896	Camphene	0.06
15.196	Sabinene	1.92
15.530	beta-Pinene	11.27
15.803	6-Methyl hept-5-en-2-one	0.01
16.137	Myrcene	1.76
16.987	Octanal	0.04
17.234	alpha-Phellandrene	0.05
17.911	alpha-Terpinene	0.23
18.403	para-Cymene	0.51
18.811	Limonene	65.65
18.875	beta-Phellandrene	0.04
18.942	1,8-Cineole	0.01
19.088	(Z)-beta-Ocimene	0.05
19.785	(E)-beta-Ocimene	0.11
20.622	gamma-Terpinene	8.65
21.402	trans-Sabinene hydrate	0.05
22.440	Terpinolene	0.35
23.385	Linalool	0.10
23.489	cis-Sabinene hydrate	0.03
23.733	Nonanal	0.08
25.689	cis-Limonene oxide	0.03
25.986	trans-Limonene oxide	0.02
26.381	Unidentified	0.02
26.696	Camphor	0.01
27.017	Citronellal	0.04
28.346	Unidentified	0.02
29.023	Terpinen-4-ol	0.04
30.023	alpha-Terpineol	0.20
30.792	Decanal	0.03
32.003	Nerol	0.12
32.158	Citronellol	0.02
32.486	Unidentified	0.01
32.949	Neral	1.10
33.365	Carvone	0.01
33.766	Geraniol	0.09
34.974	Geranial	1.93
35.515	Perillaldehyde	0.02
36.476	Unidentified	0.01
37.037	Carvacrol	0.02
37.739	Undecenal	0.03
37.852	Unidentified	0.02
40.465	Citronellyl acetate	0.02
40.547	Eugenol	0.08
41.040	Neryl acetate	0.62
42.324	Geranyl acetate	0.32
43.858	Tetradecane	0.02
44.639	cis-alpha-Bergamotene	0.02
45.057	beta-Caryophyllene	0.25
45.893	trans-alpha-Bergamotene	0.39
46.100	Unidentified	0.02
46.785	Unidentified	0.01
47.111	(E)-beta-Farnesene	0.04
47.314	alpha-Humulene	0.02
47.528	Unidentified	0.01
49.070	Unidentified	0.02
49.617	Unidentified	0.02
49.793	Bicyclogermacrene	0.03
50.085	cis-alpha-Bisabolene	0.06
50.281	Unidentified	0.01

Chromatogram Lemon Cold Pressed



Comments:

The analysis of this Lemon, CP batch sample meets the expected chemical profile for authentic essential oil of *Citrus limon*. No contamination or adulteration was detected. The results provided in this GCMS quality analysis reflect the chemical composition of the oil and lot referenced above on the date of analysis.

R.Time	Name	Area%
50.532	beta-Bisabolene	0.59
52.480	Unidentified	0.01
54.618	Spathulenol	0.06
56.516	Unidentified	0.02
60.941	alpha-Bisabolol	0.06
64.523	Unidentified	0.02
64.879	Unidentified	0.01
74.925	Unidentified	0.02
75.505	Citropten	0.07
82.845	Unidentified	0.05
83.145	Unidentified	0.02
96.711	Unidentified	0.05
102.800	Unidentified	0.01
		100.00