

Sample Information

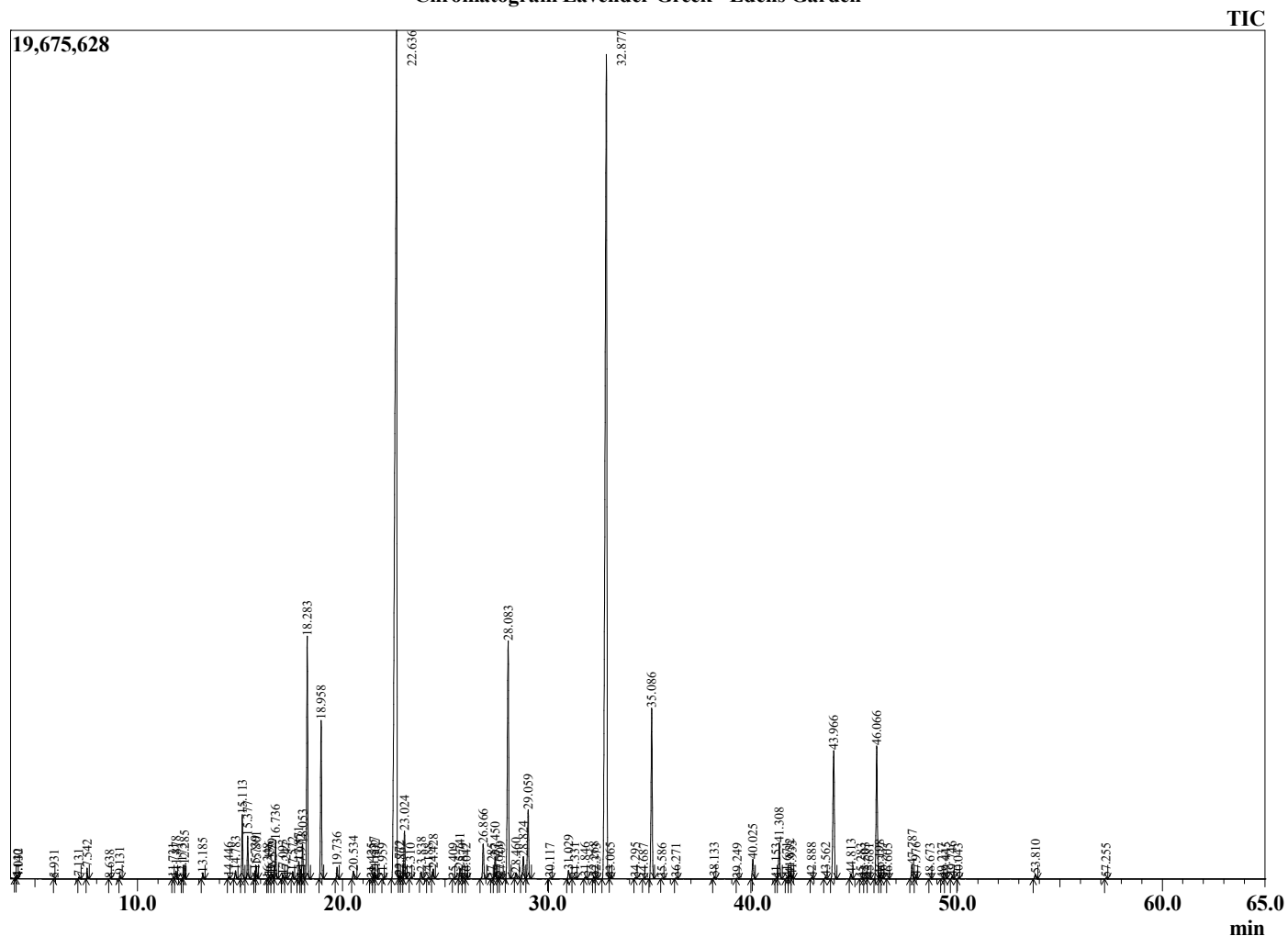
Analyzed by : Dr. Robert S. Pappas
 Analyzed : 7/28/2022 11:53:21 PM
 Sample Type : Essential Oil
 Sample Name : Lavender Greek - Edens Garden
 Sample ID : EG Lot #BB11GAG
 Injection Volume : 0.10
 Instrument ID : GC-4



Peak Report TIC

R.Time	Name	Area%
4.032	3-Methylbutanal	0.01
4.140	2-Methylbutanal	0.01
5.931	Toluene	0.00
7.131	Butyl acetate	0.03
7.542	Hexyl methyl ether	0.14
8.638	Hex-(3Z)-enol	0.01
9.131	Hexanol	0.06
11.731	Tricyclene	0.02
11.878	alpha-Thujene	0.13
12.173	2,7-Diimethyloxepine	0.01
12.285	alpha-Pinene	0.23
13.185	Camphene	0.11
14.446	Sabinene	0.03
14.783	beta-Pinene + 1-Octen-3-ol	0.17
15.113	3-Octanone	1.19
15.377	Myrcene	0.80
15.739	Butyl butyrate	0.14
15.801	3-Octanol	0.23
16.348	Unidentified	0.01
16.436	alph-Phellandrene	0.05
16.579	delta-3-Carene	0.09
16.736	Hexyl acetate	0.76
17.093	alpha-Terpinene	0.08
17.247	meta-Cymene	0.03
17.572	para-Cymene	0.14
17.871	Limonene	0.34
17.972	beta-Phellandrene	0.17
18.053	1,8-Cineole	0.69
18.283	(Z)-beta-Ocimene	4.83
18.958	(E)-beta-Ocimene	3.14
19.736	gamma-Terpinene	0.24
20.534	cis-Linalool oxide (furanoid)	0.19
21.425	Camphenilone	0.01
21.537	Terpinolene	0.15
21.602	trans-Linalool oxide (furanoid)	0.08
21.959	para-Cymenene	0.01
22.636	Linalool	31.76
22.772	Hotrienol	0.06
22.862	Hexyl propionate	0.05
23.024	1-Octen-3-yl acetate	1.00
23.310	Heptyl acetate	0.01
23.838	3-Octyl acetate	0.15
24.188	cis-para-Menth-2-en-1-ol	0.02
24.428	allo-Ocimene	0.21
25.409	trans-para-Menth-2-en-1-ol	0.01
25.741	Camphor	0.27
25.879	Unidentified	0.01
26.042	Nerol oxide	0.01
26.866	Lavandulol	0.80
27.285	cis-Linalool oxide (pyranoid)	0.02
27.450	Borneol	0.50
27.621	trans-Linalool oxide (pyranoid)	0.02
27.709	Undeca-1,3,5-triene	0.05
28.083	Terpinen-4-ol	5.74
28.460	Cryptone	0.14
28.824	Hexyl butyrate	0.53
29.059	alpha-Terpineol	1.60
30.117	Octyl acetate	0.01
31.029	Nerol	0.21
31.331	Bornyl formate	0.04
31.846	Hexyl 2-methylbutyrate	0.04
32.268	Cuminaldehyde	0.05

Chromatogram Lavender Greek - Edens Garden



Comments:

The analysis of this Lavender Greek batch sample meets the expected chemical profile for authentic essential oil of Lavandula angustifolia.

No contamination or adulteration was detected. The results provided in this GCMS quality analysis reflect the chemical composition of the oil and lot referenced above on the date of analysis.

©Copyright 2022 by Essential Oil University. All rights reserved. Any publishing, copying, use, dissemination, or distribution of this report, including online, without the express written permission of Essential Oil University is strictly prohibited.

R.Time	Name	Area%
32.373	Carvone	0.02
32.877	Linalyl acetate	28.63
33.065	Unidentified	0.02
34.295	Isopulegyl acetate	0.02
34.687	Phellandral	0.01
35.086	Lavandulyl acetate	4.04
35.586	para-Cymen-7-ol	0.01
36.271	Tridecane	0.02
38.133	Hexyl tiglate	0.04
39.249	alpha-Terpinyl acetate	0.02
40.025	Neryl acetate	0.47
41.153	alpha-Copaene	0.01
41.308	Geranyl acetate	0.86
41.671	beta-Bourbonene	0.03
41.832	Hexyl hexanoate	0.11
41.933	7-epi-Sesquithujene	0.08
42.888	Sesquithujene isomer	0.02
43.562	cis-alpha-Bergamotene	0.04
43.966	trans-beta-Caryophyllene	3.60
44.813	trans-alpha-Bergamotene	0.12
45.283	(Z)-beta-Farnesene	0.01
45.503	Unidentified	0.03
45.681	beta-Santalene	0.02
46.066	(E)-beta-Farnesene	3.33
46.198	alpha-Humulene	0.10
46.337	Sesquisabinene	0.03
46.605	Unidentified	0.01
47.787	Germacrene D	0.35
47.976	trans-beta-Bergamotene	0.05
48.673	Bicyclogermacrene	0.01
49.237	(E,E)-alpha-Farnesene	0.01
49.445	beta-Bisabolene	0.02
49.746	gamma-Cadinene	0.06
50.043	Unidentified	0.02
53.810	Caryophyllene oxide	0.12
57.255	tau-Cadinol	0.02
		100.00