

Sample Information

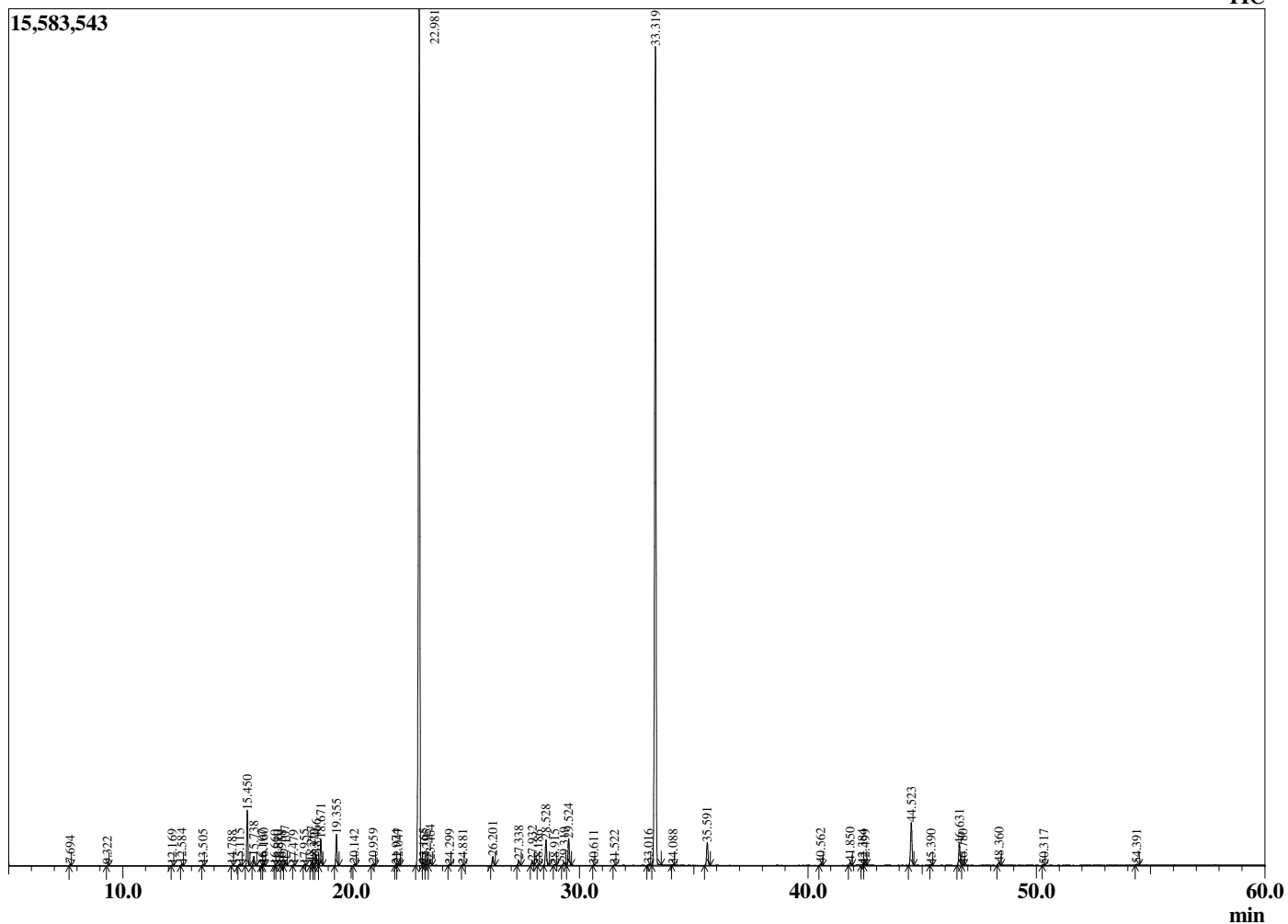
Analyzed by : Dr. Robert S. Pappas
 Analyzed : 5/18/2018 11:12:36 AM
 Sample Type : Essential Oil
 Sample Name : Lavender - Edens Garden
 Sample ID : AH03EE
 Injection Volume : 0.10
 Instrument ID : GC-3



Peak Report TIC

R.Time	Name	Area%
7.694	Hexyl methyl ether	0.04
9.322	n-Hexanol	0.02
12.169	alpha-Thujene	0.03
12.584	alpha-Pinene	0.06
13.505	Camphene	0.04
14.788	Sabinene	0.01
15.115	beta-Pinene + 1-Octen-3-ol	0.08
15.450	3-Octanone	2.18
15.738	Myrcene	0.39
16.107	Butyl butyrate	0.03
16.160	3-Octanol	0.09
16.660	Pseudolimonene	0.01
16.810	alpha-Phellandrene	0.02
16.958	delta-3-Carene	0.02
17.107	Hexyl acetate	0.19
17.479	alpha-Terpinene	0.02
17.955	para-Cymene	0.04
18.267	Limonene	0.16
18.372	beta-Phellandrene	0.06
18.466	1,8-Cineole	0.50
18.671	cis-beta-Ocimene	1.10
19.355	trans-beta-Ocimene	1.30
20.142	gamma-Terpinene	0.06
20.959	cis-Linalool oxide (furanoid)	0.09
21.974	Terpinolene	0.04
22.047	trans-Linalool oxide (furanoid)	0.09
22.981	Linalool	42.20
23.165	Hotrienol	0.11
23.295	Hexyl propionate	0.05
23.464	1-Octen-3-yl acetate	0.26
24.299	3-Octyl acetate	0.04
24.881	allo-Ocimene	0.03
26.201	Camphor	0.43
27.338	Lavandulol	0.24
27.932	Borneol	0.22
28.186	Undeca-1,3,5-triene	0.01
28.528	Terpinen-4-ol	1.24
28.915	Cryptone	0.03
29.319	Hexyl butyrate	0.16
29.524	alpha-Terpineol	1.26
30.611	Octyl acetate	0.01
31.522	Nerol	0.02
33.016	Unidentified	0.06
33.319	Linalyl acetate	41.79
34.088	Unidentified	0.02
35.591	Lavandulyl acetate	1.17
40.562	Neryl acetate	0.08
41.850	Geranyl acetate	0.14
42.384	Hexyl hexanoate	0.04
42.499	7-epi-Sesquithujene	0.03
44.523	beta-Caryophyllene	2.31
45.390	trans-alpha-Bergamotene	0.03
46.631	trans-beta-Farnesene	1.08
46.780	alpha-Humulene	0.04
48.360	Germacrene D	0.14
50.317	gamma-Cadinene	0.03
54.391	Caryophyllene oxide	0.05
		100.00

Chromatogram Lavender



Comments:

The analysis of this Lavender batch sample meets the expected chemical profile for authentic essential oil of *Lavandula angustifolia*. No contamination or adulteration was detected.