

Sample Information

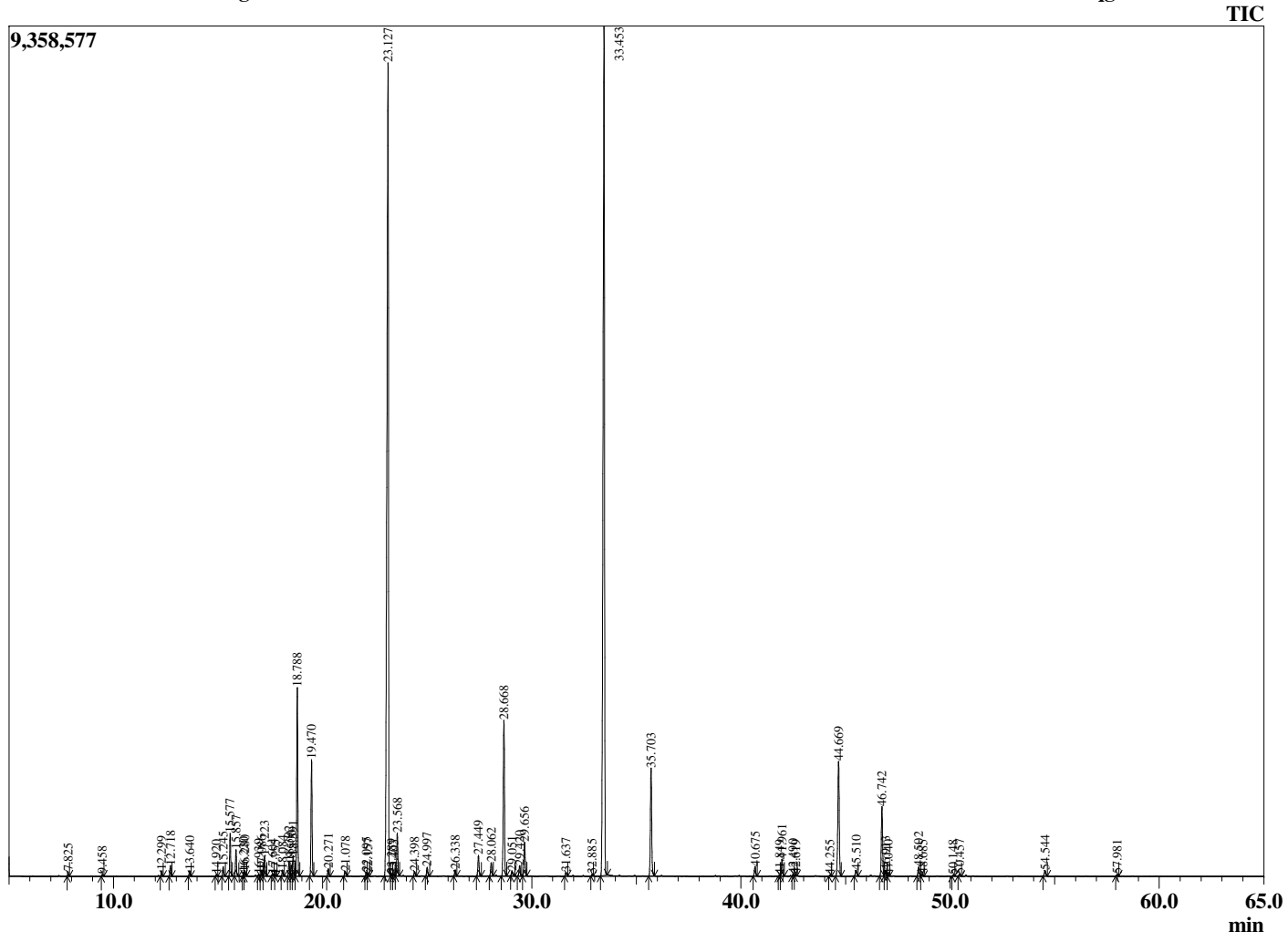
Analyzed by : Tanner Wortham
 Analyzed : 12/26/2016 2:49:41 PM
 Sample Type : Essential Oil
 Sample Name : Lavender - French
 Sample ID : LF-1955
 Injection Volume : 0.20
 Data File : C:\GCMSsolution\Data\EOU\Academic\Lavender - French LF-1955.qgd



Peak Report TIC

R.Time	Name	Area%
7.825	Hexyl methyl ether	0.08
9.458	Hexanol	0.04
12.299	alpha-Thujene	0.12
12.718	alpha-Pinene	0.25
13.640	Camphene	0.13
14.920	Sabinene	0.04
15.245	1-Octen-3-ol	0.24
15.577	3-Octanone	1.05
15.857	Myrcene	0.69
16.220	Butyl butyrate	0.10
16.280	3-Octanol	0.15
16.939	alpha-Phellandrene	0.04
17.086	delta-3-Carene	0.15
17.223	Hexyl acetate	0.51
17.604	alpha-Terpinene	0.06
17.755	ortho-Cymene	0.03
18.084	para-Cymene	0.16
18.392	Limonene	0.39
18.500	beta-Phellandrene	0.29
18.591	1,8-cineole	0.55
18.788	cis-beta-Ocimene	5.01
19.470	trans-beta-Ocimene	3.13
20.271	gamma-Terpinene	0.20
21.078	cis-Sabinene hydrate + cis-Linalool oxide (fu	0.16
22.095	Terpinolene	0.12
22.157	trans-Linalool oxide (furanoid)	0.08
23.127	Linalool	32.35
23.289	Hotrienol	0.07
23.403	Hexyl propionate	0.04
23.568	1-Octen-3-yl acetate	1.23
24.398	3-Octyl acetate	0.12
24.997	allo-Ocimene	0.25
26.338	Camphor	0.18
27.449	Lavandulol	0.64
28.062	Borneol	0.41
28.668	Terpinen-4-ol	4.91
29.051	Cryptone	0.15
29.420	Hexyl butyrate	0.34
29.656	alpha-Terpineol	1.05
31.637	Nerol	0.11
32.885	Cuminal	0.05
33.453	Linalyl acetate	32.10
35.703	Lavandulyl acetate	3.54
40.675	Neryl acetate	0.31
41.849	alpha-Copaene	0.04
41.961	Geranyl acetate	0.54
42.490	Hexyl hexanoate	0.04
42.619	7-epi-Sesquithujene	0.04
44.255	cis-alpha-Bergamotene	0.03
44.669	beta-Caryophyllene	4.24
45.510	trans-alpha-Bergamotene	0.21
46.742	cis-beta-Farnesene	2.29
46.913	alpha-Humulene	0.19
47.040	trans-beta-Farnesene	0.03
48.502	Germacrene D	0.31
48.685	Sesquiphellandrene isomer	0.05
50.148	beta-Bisabolene	0.03
50.457	gamma-Cadinene	0.08
54.544	Caryophyllene oxide	0.20
57.981	tau-Cadinol	0.05
		100.00

Chromatogram Lavender - French C:\GCMSsolution\Data\EOU\Academic\Lavender - French LF-1955.qgd



Comments:

The analysis of this Lavender batch sample meets the expected chemical profile for authentic essential oil of *Lavandula angustifolia*. No contamination or adulteration was detected.

Typical Ranges of Main Components:

©Copyright 2016 by Essential Oil University. All rights reserved. Any publishing, copying, use, dissemination, or distribution of this report, including online, without the express written permission of Essential Oil University is strictly prohibited.