

Sample Information

Analyzed by : Dr. Robert S. Pappas
 Analyzed : 6/24/2019 6:35:01 PM
 Sample Type : Essential Oil
 Sample Name : Lavender, France - Edens Garden
 Sample ID : AI26DF
 Injection Volume : 0.10
 Instrument ID : GC-4

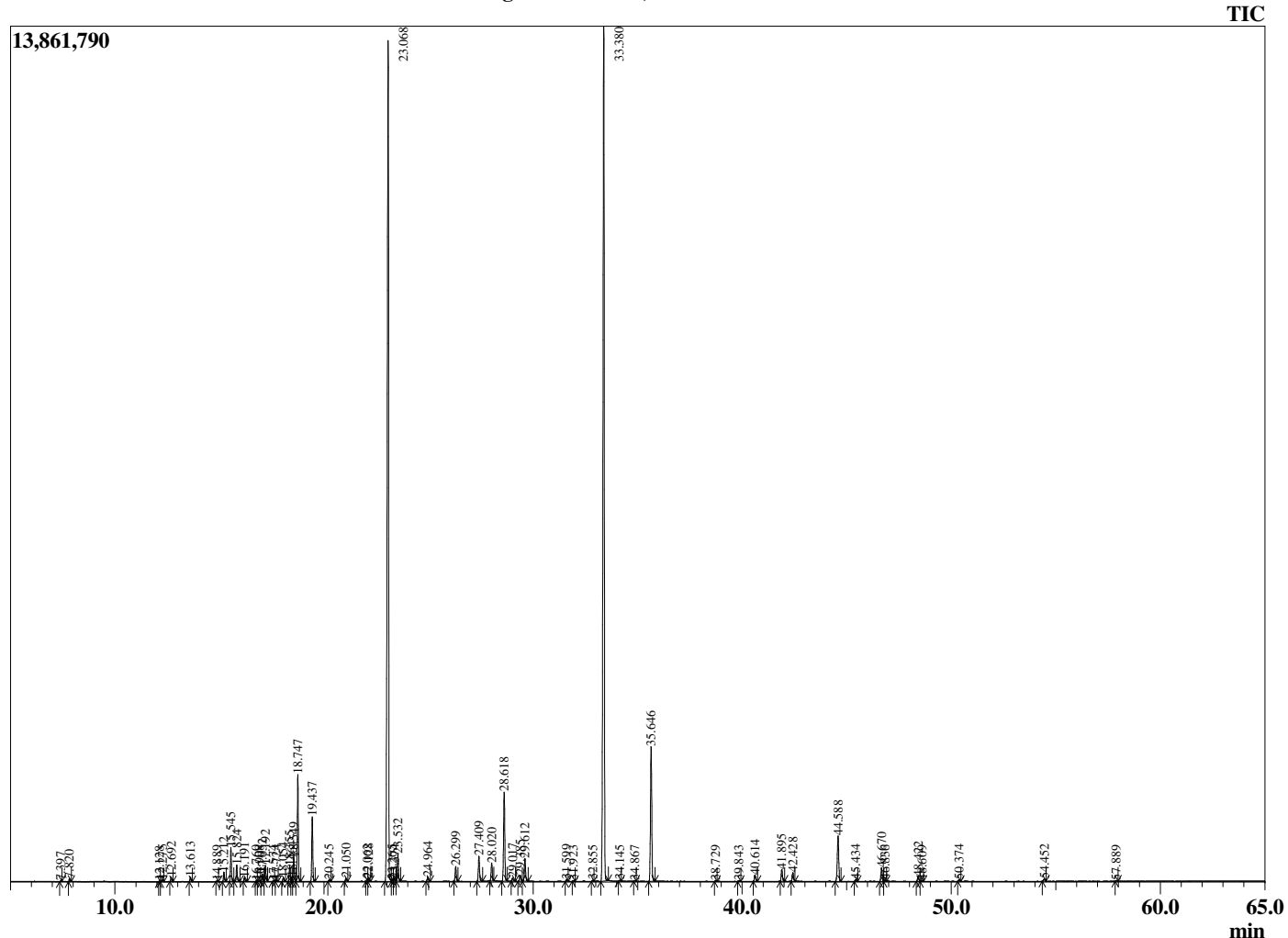


Peak Report TIC

R.Time	Name	Area%
7.397	Butyl acetate	0.02
7.820	Hexyl methyl ether	0.07
12.128	Tricyclene	0.01
12.275	alpha-Thujene	0.05
12.692	alpha-Pinene	0.13
13.613	Camphene	0.14
14.889	Sabinene	0.02
15.212	1-Octen-3-ol	0.30
15.545	3-Octanone	1.02
15.824	Myrcene	0.54
16.191	Butyl butyrate	0.12
16.760	Pseudolimonene	0.02
16.908	alpha-Phellandrene	0.03
17.052	delta-3-Carene	0.25
17.192	Hexyl acetate	0.51
17.574	alpha-Terpinene	0.02
17.724	ortho-Cymene	0.04
18.054	para-Cymene	0.13
18.355	Limonene	0.49
18.464	beta-Phellandrene	0.16
18.549	1,8-Cineole	0.79
18.747	cis-beta-Ocimene	3.47
19.437	trans-beta-Ocimene	2.11
20.245	gamma-Terpinene	0.05
21.050	cis-Linalool oxide (furanoid)	0.12
22.062	Terpinolene	0.08
22.128	trans-Linalool oxide (furanoid)	0.11
23.068	Linalool	36.61
23.265	Hotrienol	0.05
23.374	Hexyl propionate	0.09
23.532	1-Octen-3-yl acetate	0.97
24.964	allo-Ocimene	0.16
26.299	Camphor	0.56
27.409	Lavandulol	0.94
28.020	Borneol	0.67
28.618	Terpinen-4-ol	3.37
29.017	Cryptone	0.13
29.385	Hexyl butyrate	0.25
29.612	alpha-Terpineol	0.85
31.599	Nerol	0.05
31.923	Unidentified	0.02
32.855	Cuminal	0.03
33.380	Linalyl acetate	34.79
34.145	Unidentified	0.03
34.867	Unidentified	0.02
35.646	Lavandulyl acetate	5.38
38.729	Hexyl tiglate	0.02
39.843	alpha-Terpinyl acetate	0.02
40.614	Neryl acetate	0.25
41.895	Geranyl acetate	0.47
42.428	Hexyl hexanoate	0.36
44.588	beta-Caryophyllene	2.07
45.434	trans-alpha-Bergamotene	0.07
46.670	trans-beta-Farnesene	0.55
46.836	alpha-Humulene	0.04
48.422	Germacrene D	0.20
48.609	Unidentified	0.02
50.374	gamma-Cadinene	0.06
54.452	Caryophyllene oxide	0.10
57.889	alpha-Muurolol (=Torreyol)	0.02
		100.00

This report is valid for 1 year from the analyzed date.

Chromatogram Lavender, France - Edens Garden



Comments:

The analysis of this Lavender, France batch sample meets the expected chemical profile for authentic essential oil of *Lavandula angustifolia*. No contamination or adulteration was detected.