

Sample Information

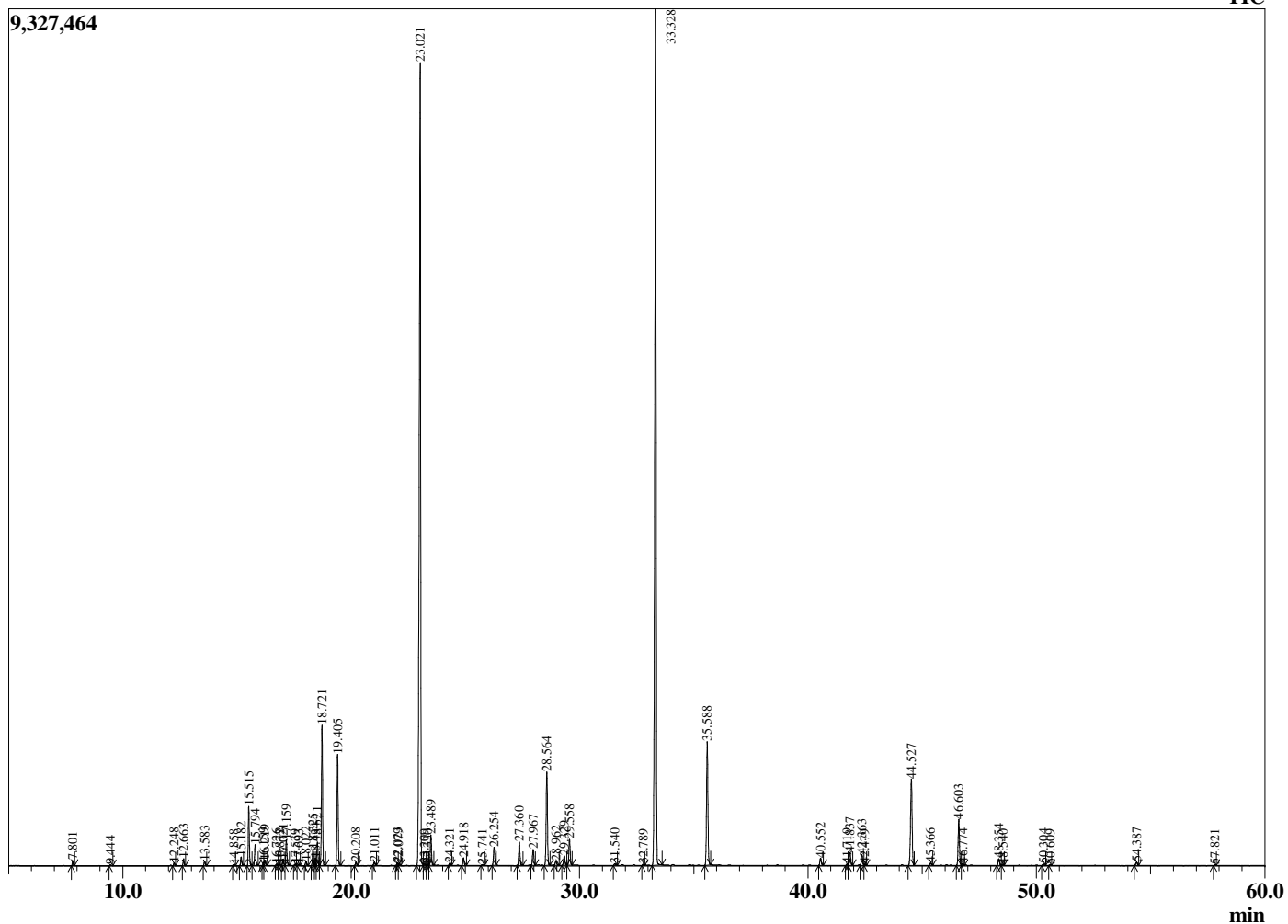
Analyzed by : Dr. Robert S. Pappas
 Analyzed : 9/5/2019 4:34:34 PM
 Sample Type : Essential Oil
 Sample Name : Lavender, Bulgaria - Edens Garden
 Sample ID : AI24FF
 Injection Volume : 0.10
 Instrument ID : GC-3



Peak Report TIC

R.Time	Name	Area%
7.801	Hexyl methyl ether	0.12
9.444	n-Hexanol	0.03
12.248	alpha-Thujene	0.08
12.663	alpha-Pinene	0.19
13.583	Camphene	0.14
14.858	Sabinene	0.03
15.182	beta-Pinene + 1-Octen-3-ol	0.27
15.515	3-Octanone	1.73
15.794	Myrcene	0.65
16.159	Butyl butyrate	0.08
16.219	3-Octanol	0.17
16.726	Pseudolimonene	0.04
16.872	alpha-Phellandrene	0.04
17.021	delta-3-Carene	0.20
17.159	Hexyl acetate	0.80
17.539	alpha-Terpinene	0.04
17.693	ortho-Cymene	0.04
18.022	para-Cymene	0.14
18.325	Limonene	0.53
18.434	beta-Phellandrene	0.23
18.521	1,8-Cineole	0.76
18.721	cis-beta-Ocimene	4.41
19.405	trans-beta-Ocimene	3.42
20.208	gamma-Terpinene	0.11
21.011	cis-Linalool oxide (furanoid)	0.12
22.023	Terpinolene	0.10
22.079	trans-Linalool oxide (furanoid)	0.07
23.021	Linalool	31.60
23.209	Hotrienol	0.06
23.330	Hexyl propionate	0.04
23.489	1-Octen-3-yl acetate	1.00
24.321	3-Octyl acetate	0.08
24.918	allo-Ocimene	0.27
25.741	neo-allo-Ocimene	0.03
26.254	Hexyl isobutyrate	0.64
27.360	Lavandulol	0.83
27.967	Borneol	0.57
28.564	Terpinen-4-ol	3.40
28.962	Cryptone	0.17
29.329	Hexyl butyrate	0.37
29.558	alpha-Terpineol	0.94
31.540	Nerol	0.07
32.789	Cuminal	0.05
33.328	Linalyl acetate	33.32
35.588	Lavandulyl acetate	4.59
40.552	Neryl acetate	0.28
41.719	alpha-Copaene	0.05
41.837	Geranyl acetate	0.49
42.363	Hexyl hexanoate	0.42
42.479	7-epi-Sesquithujene	0.04
44.527	beta-Caryophyllene	3.71
45.366	trans-alpha-Bergamotene	0.10
46.603	trans-beta-Farnesene	1.73
46.774	alpha-Humulene	0.09
48.354	Germacrene D	0.27
48.540	Unidentified	0.03
50.304	gamma-Cadinene	0.06
50.609	delta-Cadinene	0.03
54.387	Caryophyllene oxide	0.14
57.821	alpha-Muurolol (=Torreyol)	0.03
		100.00

Chromatogram Lavender, Bulgaria - Edens Garden



Comments:

The analysis of this Lavender, Bulgaria batch sample meets the expected chemical profile for authentic essential oil of *Lavandula angustifolia*. No contamination or adulteration was detected.