

Sample Information

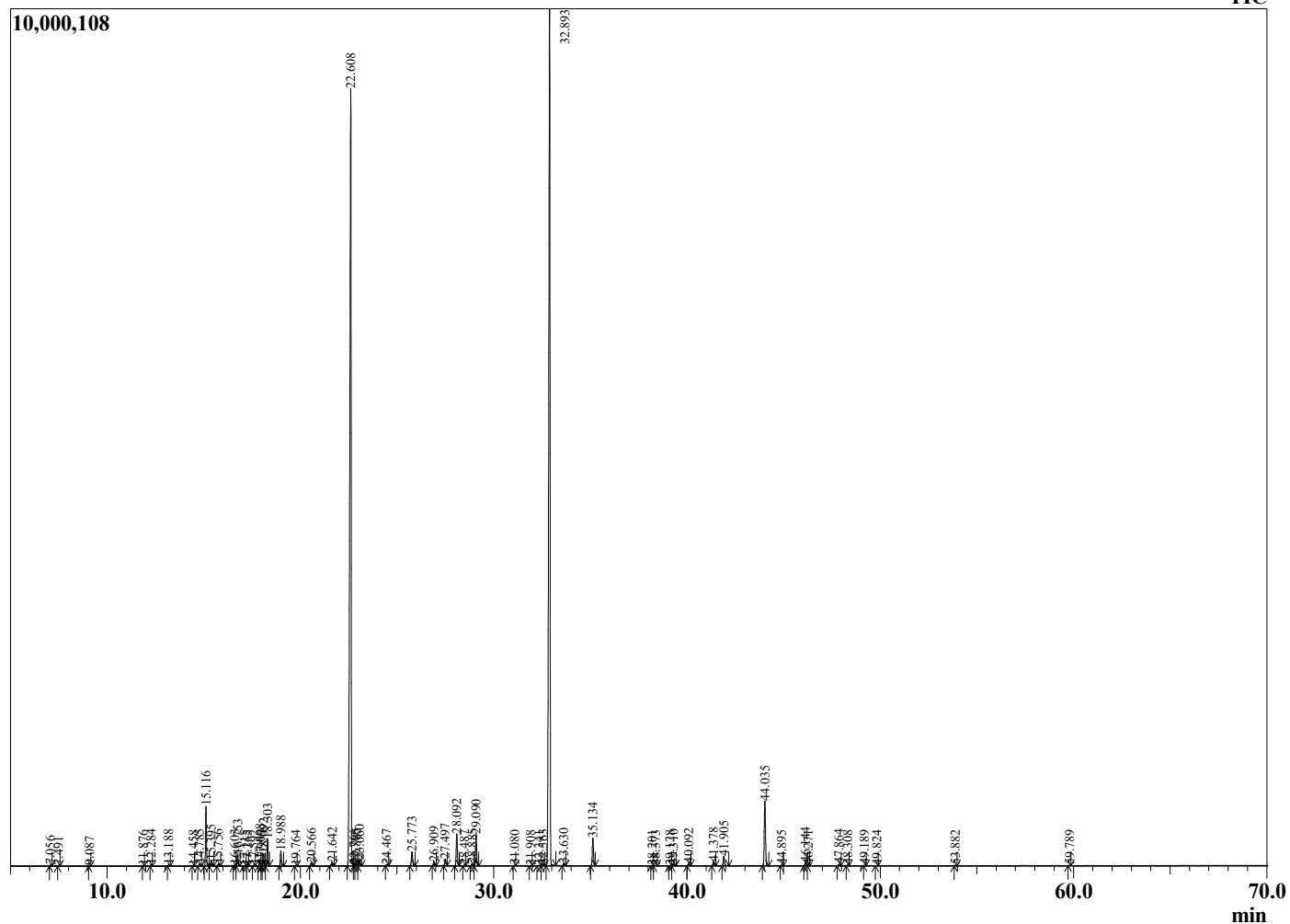
Analyzed by : Dr. Robert S. Pappas  
 Analyzed : 7/13/2022 6:40:54 PM  
 Sample Type : Essential Oil  
 Sample Name : Lavendar Oil, French Malliette - Eden's Garden  
 Sample ID : BB12GAF  
 Injection Volume : 0.10  
 Instrument ID : GC-3



Peak Report TIC

R.Time	Name	Area%
7.056	Butyl acetate	0.03
7.491	Hexyl methyl ether	0.02
9.087	n-Hexanol	0.01
11.876	alpha-Thujene	0.02
12.284	alpha-Pinene	0.05
13.188	Camphene	0.04
14.458	Sabinene	0.01
14.785	beta-Pinene + 1-Octen-3-ol	0.09
15.116	3-Octanone	2.03
15.395	Myrcene	0.22
15.756	Butyl butyrate	0.08
16.603	delta-3-Carene	0.04
16.753	Hexyl acetate	0.44
17.115	alpha-Terpinene	0.01
17.265	ortho-Cymene	0.01
17.592	para-Cymene	0.03
17.898	Limonene	0.26
17.999	beta-Phellandrene	0.02
18.092	1,8-Cineole	0.48
18.303	cis-beta-Ocimene	1.01
18.988	trans-beta-Ocimene	0.56
19.764	gamma-Terpinene	0.02
20.566	cis-Linalool oxide (furanoid)	0.13
21.642	trans-Linalool oxide (furanoid)	0.18
22.608	Linalool	40.88
22.766	Hotrienol	0.06
22.885	Hexyl propionate	0.12
23.060	1-Octen-3-yl acetate	0.26
24.467	allo-Ocimene	0.05
25.773	Camphor	0.68
26.909	Lavandulol	0.18
27.497	Borneol	0.29
28.092	Terpinen-4-ol	1.38
28.487	Cryptone	0.03
28.885	Hexyl butyrate	0.08
29.090	alpha-Terpineol	1.34
31.080	Nerol	0.02
31.908	Hexyl 2-methylbutyrate	0.01
32.341	Hexyl 3-methylbutyrate	0.03
32.563	Unidentified	0.04
32.893	Linalyl acetate	43.01
33.630	Unidentified	0.11
35.134	Lavandulyl acetate	1.24
38.201	Hexyl tiglate	0.02
38.373	Unidentified	0.02
39.128	Unidentified	0.02
39.310	alpha-Terpinyl acetate	0.06
40.092	Neryl acetate	0.11
41.378	Geranyl acetate	0.17
41.905	Hexyl hexanoate	0.47
44.035	beta-Caryophyllene	3.14
44.895	trans-alpha-Bergamotene	0.02
46.144	trans-beta-Farnesene	0.15
46.271	alpha-Humulene	0.03
47.864	Germacrene D	0.07
48.308	Unidentified	0.02
49.189	Lavandulyl isovalerate	0.02
49.824	gamma-Cadinene	0.02
53.882	Caryophyllene oxide	0.02
59.789	alpha-Bisabolol	0.02
		100.00

Lavendar Oil, French Malliette - Eden's Garden



Comments:

The analysis of this Lavendar Oil batch sample meets the expected chemical profile for authentic essential oil of *Lavandula angustifolia*. No contamination or adulteration was detected.

The results provided in this GCMS quality analysis reflect the chemical composition of the oil and lot referenced above on the date of analysis.