

Sample Information

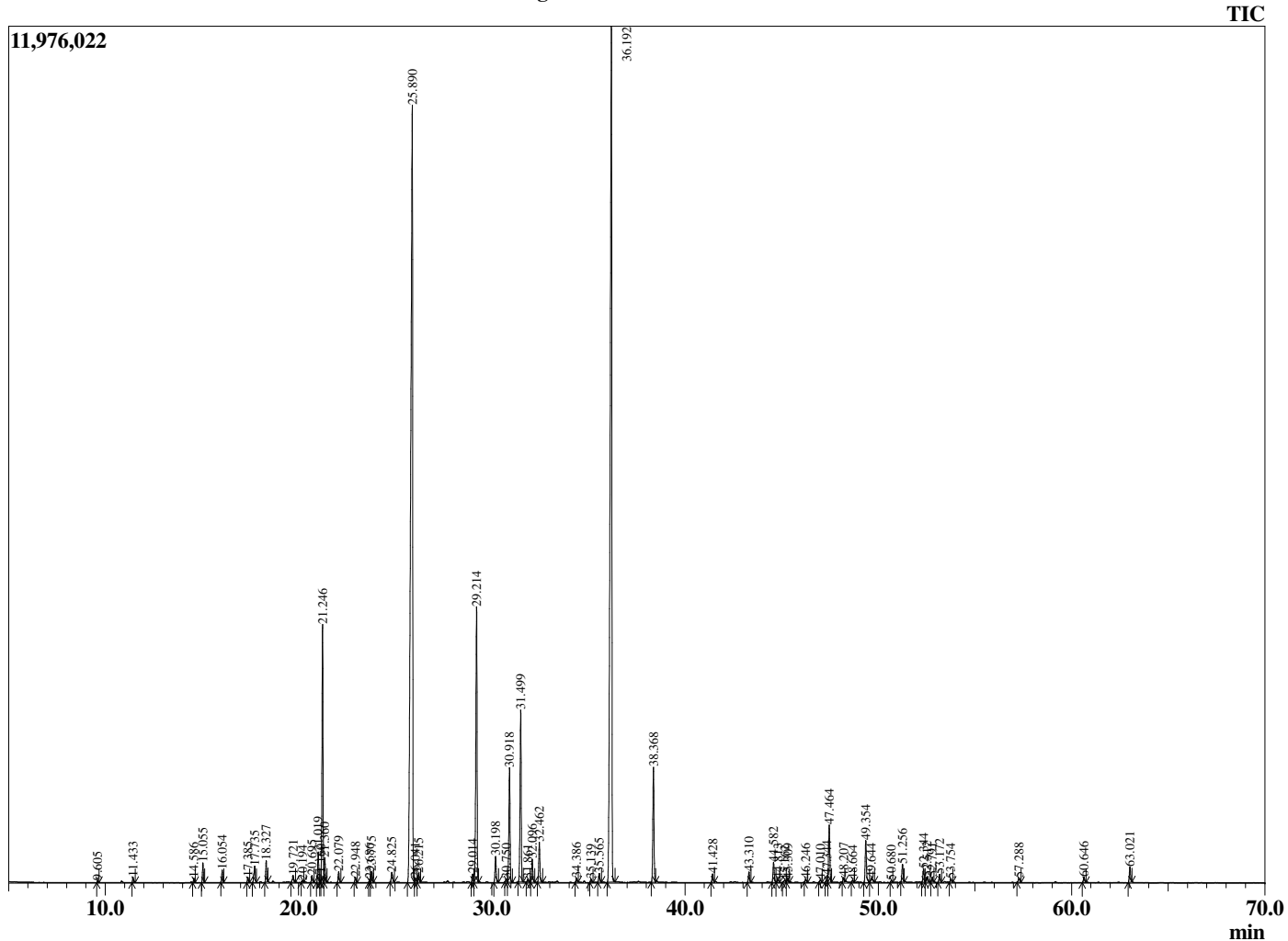
Analyzed by : Dr. Robert S. Pappas  
 Analyzed : 7/12/2020 7:32:08 PM  
 Sample Type : Essential Oil  
 Sample Name : Lavandin - Edens Garden  
 Sample ID : BA18FAA  
 Injection Volume : 0.10  
 Instrument ID : GC-2



Peak Report TIC

R.Time	Name	Area%
9.605	Hexyl methyl ether	0.03
11.433	Hexanol	0.11
14.586	alpha-Thujene	0.08
15.055	alpha-Pinene	0.38
16.054	Camphene	0.24
17.385	Sabinene	0.10
17.735	beta-Pinene	0.45
18.327	Myrcene	0.44
19.721	Hexyl acetate	0.19
20.194	alpha-Terpinene	0.04
20.695	para-Cymene	0.16
21.019	Limonene	0.68
21.160	beta-Phellandrene	0.02
21.246	1,8-cineole	5.64
21.360	cis-beta-Ocimene	0.52
22.079	trans-beta-Ocimene	0.24
22.948	gamma-Terpinene	0.12
23.686	1-Octanol	0.07
23.775	cis-Linalool oxide (furanoid)	0.27
24.825	Terpinolene	0.32
25.890	Linalool	32.73
26.041	Hexyl propionate	0.13
26.215	1-Octen-3-yl acetate	0.21
29.014	Hexyl isobutyrate	0.20
29.214	Camphor	7.15
30.198	Lavandulol	0.64
30.750	delta-Terpineol	0.07
30.918	Borneol	2.80
31.499	Terpinen-4-ol	4.20
31.861	para-Cymen-8-ol	0.08
32.096	Hexyl butyrate	0.55
32.462	alpha-Terpineol	0.97
34.386	Nerol	0.10
35.139	Hexyl 2-methylbutyrate	0.08
35.565	Hexyl 3-methylbutyrate	0.23
36.192	Linalyl acetate	30.43
38.368	Lavandulyl acetate	2.79
41.428	Hexyl tiglate	0.20
43.310	Neryl acetate	0.25
44.582	Geranyl acetate	0.51
44.813	Daucene	0.09
45.162	beta-Bourbonene	0.07
45.309	7-epi-Sesquithujene	0.10
46.246	Sesquithujene isomer	0.09
47.010	Unidentified	0.07
47.344	alpha-Santalene	0.16
47.464	beta-Caryophyllene	1.49
48.207	trans-alpha-Bergamotene	0.11
48.664	cis-beta-Farnesene	0.05
49.354	trans-beta-Farnesene	1.10
49.644	Unidentified	0.16
50.680	10-beta-H-Cadina-1(6),4-diene	0.04
51.256	Germacrene D	0.46
52.344	Lavandulyl isovalerate	0.34
52.512	(E,E)-alpha-Farnesene	0.17
52.791	beta-Bisabolene	0.11
53.172	gamma-Cadinene	0.21
53.754	beta-Sesquiphellandrene	0.09
57.288	Caryophyllene oxide	0.13
60.646	tau-Cadinol	0.14
63.021	alpha-Bisabolol	0.39
		100.00

Chromatogram Lavandin - Edens Garden



Comments:

The analysis of this Lavandin grosso batch sample meets the expected chemical profile for authentic essential oil of *Lavandula hybrida*. No contamination or adulteration was detected. The results provided in this GCMS quality analysis reflect the chemical composition of the oil and lot referenced above on the date of analysis.