

Sample Information

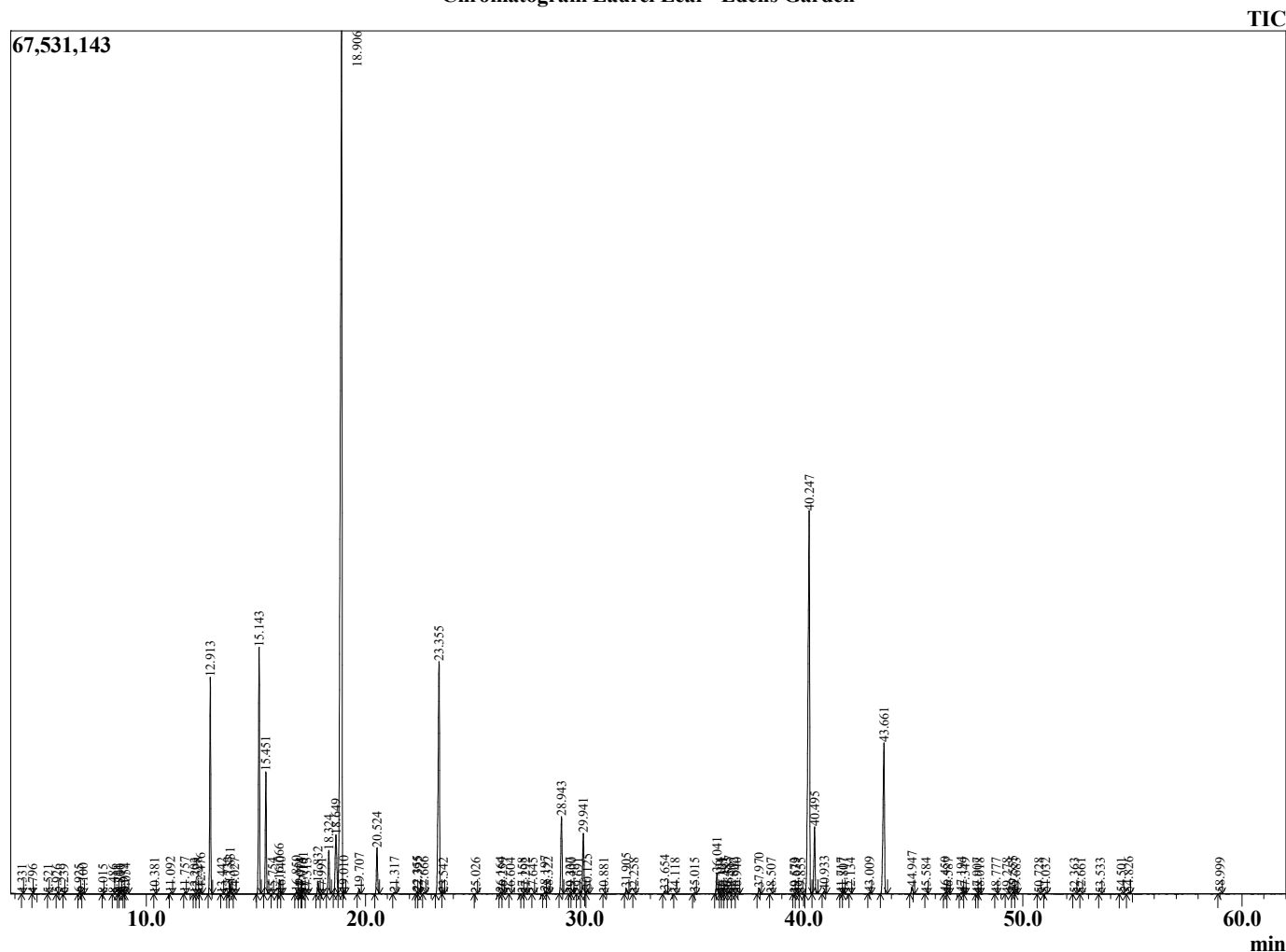
Analyzed by : Dr. Robert S. Pappas  
 Analyzed : 7/13/2022 6:11:52 PM  
 Sample Type : Essential Oil  
 Sample Name : Laurel Leaf - Edens Garden  
 Sample ID : EG Lot #BB11GAD  
 Injection Volume : 0.10  
 Instrument ID : GC-3



Peak Report TIC

R.Time	Name	Area%
4.331	2-Methylbutanal	0.01
4.796	2-Ethylfuran	0.00
5.521	Methylpyrrole	0.01
5.926	Unidentified	0.01
6.239	Unidentified	0.00
6.925	Isopropyl isobutyrate	0.02
7.100	Hexanal	0.02
8.015	Unidentified	0.00
8.486	Isopropyl butyrate	0.00
8.711	1-Methylbutyl acetate	0.00
8.800	Ethyl 2-methylbutyrate	0.02
8.977	Ethyl isovalerate	0.03
9.054	Hex-(3Z)-enol	0.03
10.381	Isopropyl 2-methylbutyrate	0.01
11.092	Heptan-2-ol	0.03
11.757	Isobutyl isobutyrate	0.03
12.203	Hashishene	0.01
12.328	Tricyclene	0.01
12.476	alpha-Thujene	0.13
12.913	alpha-Pinene	5.47
13.442	Thujadiene isomer	0.01
13.733	alpha-Fenchene	0.04
13.831	Camphene	0.26
14.027	Unidentified	0.01
15.143	Sabinene	6.76
15.451	beta-Pinene	3.27
15.754	6-Methyl hept-5-en-2-one	0.01
16.066	Myrcene	0.39
16.140	dehydro-1,8-Cineole	0.03
16.850	Isobutyl 2-methylbutyrate	0.05
17.014	Pseudolimonene	0.02
17.075	Unidentified	0.01
17.161	alpha-aPhellandrene	0.17
17.313	delta-3-Carene	0.02
17.832	alpha-Terpinene	0.32
17.991	meta-Cymene	0.01
18.324	para-Cymene	1.37
18.649	Limonene	2.49
18.906	1,8-Cineole	37.32
19.010	(Z)-beta-Ocimene	0.06
19.707	(E)-beta-Ocimene	0.14
20.524	gamma-Terpinene	1.35
21.317	trans-Sabinene hydrate	0.05
22.355	Terpinolene	0.05
22.395	trans-Linalool oxide (furanoid)	0.02
22.666	2-Nonanone	0.03
23.355	Linalool	8.55
23.542	Hotrienol	0.02
25.026	cis-para-Menth-2-en-1-ol	0.02
26.164	trans-Pinocarveol	0.04
26.259	trans-para-Menth-2-en-1-ol	0.01
26.604	Camphor	0.01
27.158	Unidentified	0.01
27.292	Sabina ketone	0.01
27.645	Pinocarvone	0.01
28.197	delta-Terpineol	0.08
28.322	Borneol	0.04
28.943	Terpinen-4-ol	2.53
29.337	para-Cymen-8-ol	0.01
29.400	trans-Isocarveol	0.01
29.691	para-Mentha-1,5-dien-7-ol	0.01
29.941	alpha-Terpineol	2.04

Chromatogram Laurel Leaf - Edens Garden



Comments:

The analysis of this Laurel Leaf batch sample meets the expected chemical profile for authentic essential oil of *Laurus nobilis*.

No contamination or adulteration was detected. The results provided in this GCMS quality analysis reflect the chemical composition of the oil and lot referenced above on the date of analysis.

©Copyright 2022 by Essential Oil University. All rights reserved. Any publishing, copying, use, dissemination, or distribution of this report, including online, without the express written permission of Essential Oil University is strictly prohibited.

R.Time	Name	Area%
30.125	Estragole	0.12
30.881	trans-Piperitol	0.01
31.905	Nerol	0.17
32.258	cis-para-Mentha-1(7),8-dien-2-ol	0.01
33.654	Linalyl acetate	0.10
34.118	Unidentified	0.01
35.015	Unidentified	0.02
36.041	Bornyl acetate	0.70
36.194	Isobornyl acetate	0.01
36.301	trans-Sabinyl acetate	0.01
36.483	Cymen-7-ol	0.01
36.587	2-Undecanone	0.09
36.802	Terpin-1-en-4-yl acetate	0.01
36.940	Carvacrol	0.01
37.970	delta-Terpinyl acetate	0.19
38.507	Unidentified	0.02
39.573	Unidentified	0.02
39.639	Unidentified	0.01
39.855	Unidentified	0.02
40.247	alpha-Terpinyl acetate	16.24
40.495	Eugenol	2.13
40.933	Neryl acetate	0.09
41.717	alpha-Ylangene	0.01
41.807	Isoledene	0.01
42.134	alpha-Copaene	0.01
43.009	beta-Elementene	0.05
43.661	Methyleugenol	5.75
44.947	trans-beta-Caryophyllene	0.26
45.584	Unidentified	0.01
46.450	(E)-Cinnamyl acetate	0.04
46.587	Unidentified	0.01
47.194	alpha-Humulene	0.05
47.349	Unidentified	0.01
47.907	Unidentified	0.00
48.018	Unidentified	0.01
48.777	Germacrene D	0.01
49.278	beta-Selinene	0.02
49.555	(E)-Methyl isoeugenol	0.06
49.683	Bicyclogermacrene	0.02
50.728	gamma-Cadinene	0.02
51.032	delta-Cadinene	0.02
52.363	(E)-alpha-Bisabolene	0.02
52.661	Elemicin	0.01
53.533	Unidentified	0.01
54.501	Spathulenol	0.03
54.826	Caryophyllene oxide	0.05
58.999	alpha-Eudesmol	0.03
		100.00