

Sample Information

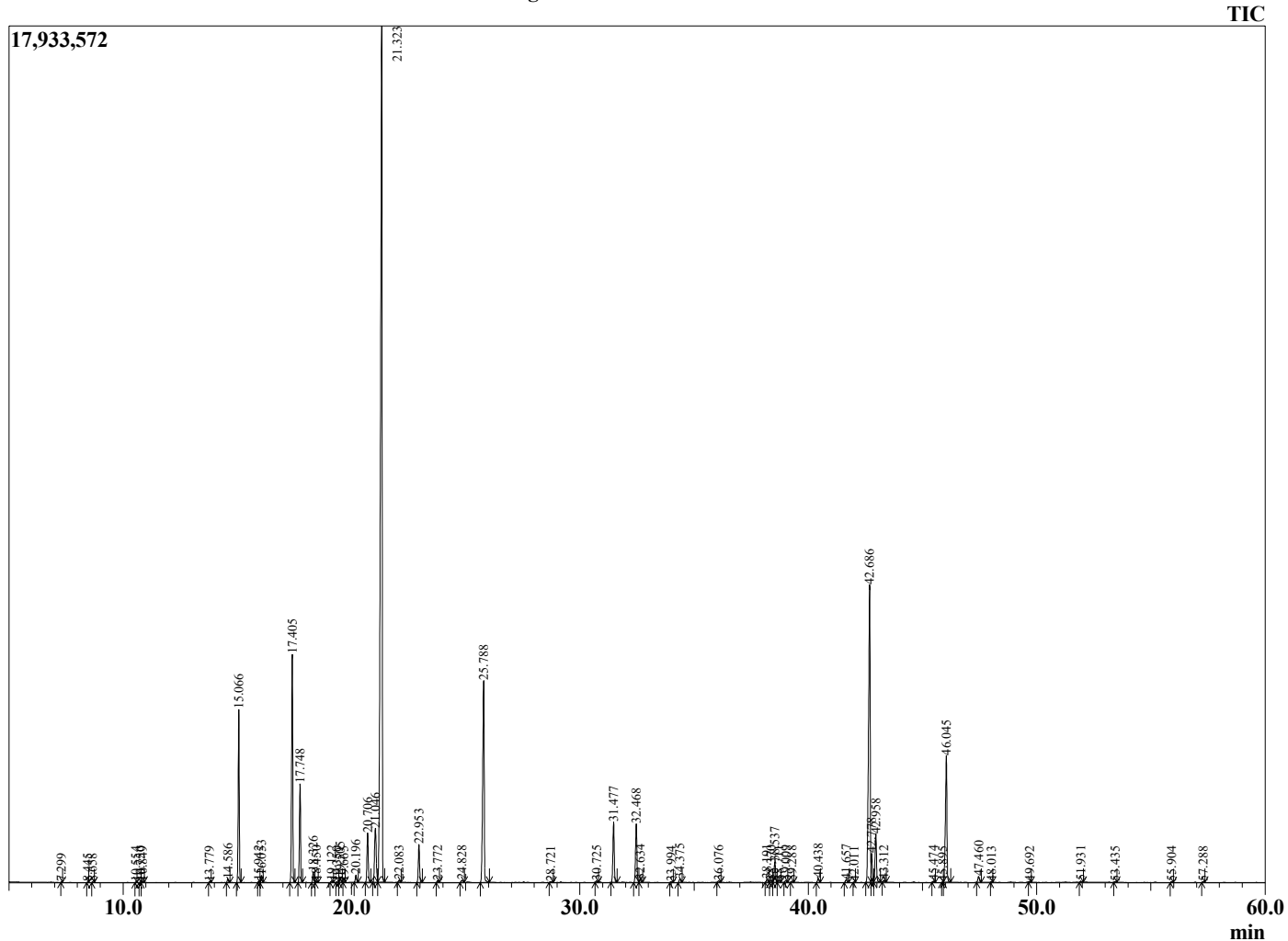
Analyzed by : Dr. Robert S. Pappas
 Analyzed : 7/11/2020 11:44:13 PM
 Sample Type : Essential Oil
 Sample Name : Laurel Leaf - Edens Garden
 Sample ID : BA18FZ
 Injection Volume : 0.10
 Instrument ID : GC-3



Peak Report TIC

R.Time	Name	Area%
7.299	Ethyl isobutyrate	0.01
8.445	Isopropyl isobutyrate	0.01
8.658	Hexanal	0.01
10.554	Ethyl 2-methylbutyrate	0.01
10.750	Ethyl isovalerate	0.02
10.849	Hex-3(Z)-enol	0.04
13.779	Isobutyl isobutyrate	0.02
14.586	alpha-Thujene	0.11
15.066	alpha-Pinene	5.05
15.942	alpha-Fenchene	0.04
16.053	Camphene	0.21
17.405	Sabinene	7.34
17.748	beta-Pinene	3.11
18.326	Myrcene	0.35
18.450	dehydro-1,8-Cineole	0.05
19.122	Isobutyl 2-methylbutyrate	0.05
19.350	Pseudolimonene	0.01
19.505	alpha-Phellandrene	0.17
19.665	delta-3-Carene	0.01
20.196	alpha-Terpinene	0.25
20.706	para-Cymene	1.79
21.046	Limonene	2.53
21.323	1,8-Cineole	40.30
22.083	trans-beta-Ocimene	0.08
22.953	gamma-Terpinene	1.30
23.772	trans-Sabinene hydrate	0.06
24.828	Terpinolene	0.10
25.788	Linalool	8.47
28.721	trans-Pinocarveol	0.04
30.725	delta-Terpineol	0.05
31.477	Terpinen-4-ol	2.22
32.468	alpha-Terpineol	2.28
32.634	Estragole	0.11
33.994	alpha-Fenchyl acetate	0.03
34.375	Nerol	0.13
36.076	Linalyl acetate	0.06
38.191	Terpinyl acetate isomer	0.11
38.370	Unidentified	0.06
38.537	Bornyl acetate	0.77
38.711	Isobornyl acetate	0.06
39.009	2-Undecanone	0.07
39.288	Unidentified	0.04
40.438	delta-Terpinyl acetate	0.15
41.657	beta-Terpinyl acetate	0.11
42.011	Unidentified	0.01
42.686	alpha-Terpinyl acetate	13.56
42.778	gamma-Terpinyl acetate	0.90
42.958	Eugenol	1.85
43.312	Neryl acetate	0.07
45.474	beta-Elemene	0.05
45.895	Unidentified	0.02
46.045	Methyleugenol	5.33
47.460	beta-Caryophyllene	0.25
48.013	Unidentified	0.01
49.692	alpha-Humulene	0.04
51.931	cis-Methyl isoeugenol	0.05
53.435	delta-Cadinene	0.03
55.904	Unidentified	0.03
57.288	Caryophyllene oxide	0.03
		100.00

Chromatogram Laurel Leaf - Edens Garden



Comments:

The analysis of this Laurel Leaf batch sample meets the expected chemical profile for authentic essential oil of *Laurus nobilis*. No contamination or adulteration was detected. The results provided in this GCMS quality analysis reflect the chemical composition of the oil and lot referenced above on the date of analysis.