

Sample Information

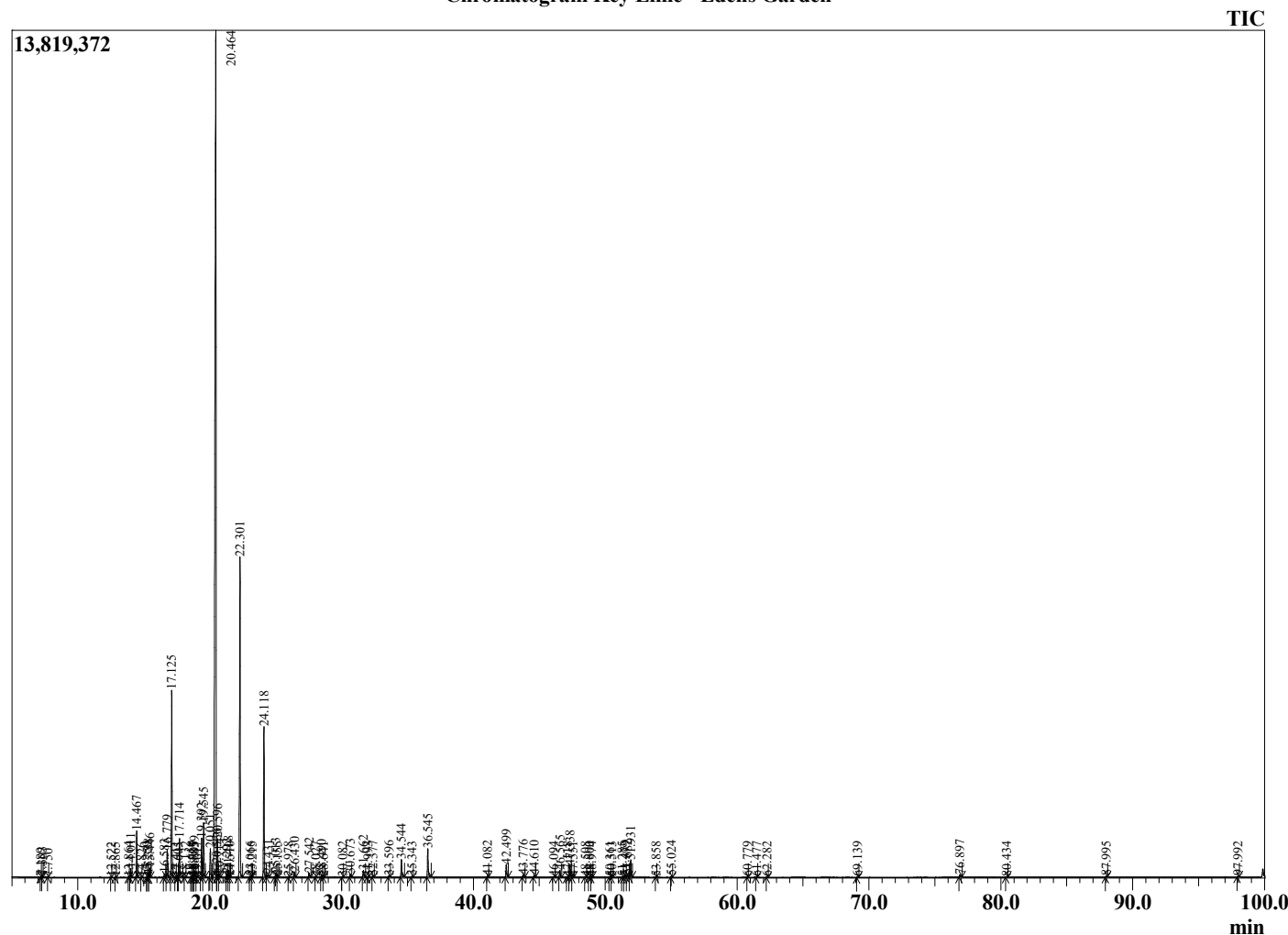
Analyzed by : Dr. Robert S. Pappas  
 Analyzed : 7/13/2022 6:32:30 PM  
 Sample Type : Essential Oil  
 Sample Name : Key Lime - Edens Garden  
 Sample ID : EG Lot #Bb13GAC  
 Injection Volume : 0.10  
 Instrument ID : GC-2



Peak Report TIC

R.Time	Name	Area%
7.189	Limediene isomer	0.01
7.303	Limediene	0.04
7.750	Limediene isomer	0.01
12.522	Nonane	0.01
12.865	Bornylene	0.01
13.864	Tricyclene	0.01
14.011	alpha-Thujene	0.29
14.467	alpha-Pinene	1.58
14.826	Unidentified	0.00
15.259	Unidentified	0.02
15.338	alpha-Fenchene	0.12
15.446	Camphene	0.33
16.583	Bois de Rose oxide	0.15
16.779	Sabinene	0.99
17.125	beta-Pinene	6.74
17.411	6-Methyl hept-5-en-2-one	0.01
17.605	para-Menthene isomer	0.01
17.714	Myrcene	1.42
18.132	Menthadiene isomer	0.02
18.610	Octanal	0.01
18.711	Pseudolimonene	0.05
18.805	Unidentified	0.02
18.859	alpha-Phellandrene	0.26
19.017	delta-3-Carene	0.03
19.392	1,4-Cineole	1.52
19.545	alpha-Terpinene	2.05
20.051	para-Cymene	1.26
20.464	Limonene	54.22
20.536	beta-Phellandrene	0.21
20.596	1,8-Cineole	1.35
20.714	(Z)-beta-Ocimene	0.13
21.292	2,2-Dimethyl-, 5-(1-methylpropenyl)-tetrahyd	0.11
21.418	(E)-beta-Ocimene	0.27
21.510	Unidentified	0.03
22.301	gamma-Terpinene	13.47
23.066	trans-Sabinene hydrate	0.05
23.215	Pinol	0.00
24.118	Terpinolene	6.19
24.431	para-Cymeneene	0.12
25.013	Linalool	0.20
25.155	cis-Sabinene hydrate	0.04
25.978	Menthatriene isomer	0.01
26.430	alpha-Fenchol	0.22
27.542	Terpin-3-en-1-ol	0.19
28.027	Epoxyterpinolene	0.01
28.490	cis-beta-Terpineol	0.08
28.641	Citronellal	0.02
30.082	Borneol	0.02
30.673	Terpinen-4-ol	0.12
31.662	alpha-Terpineol	0.30
31.993	Unidentified	0.02
32.377	Decanal	0.07
33.596	Nerol	0.07
34.544	Neral	0.81
35.343	Geraniol	0.04
36.545	Geranial	1.31
41.082	delta-Elemene	0.06
42.499	Neryl acetate	0.59
43.776	Geranyl acetate	0.13
44.610	beta-Elemene	0.09
46.094	cis-alpha-Bergamotene	0.04
46.565	trans-beta-Caryophyllene	0.31

Chromatogram Key Lime - Edens Garden



Comments:

The analysis of this Key Lime batch sample meets the expected chemical profile for authentic essential oil of Citrus aurantifolia.

No contamination or adulteration was detected. The results provided in this GCMS quality analysis reflect the chemical composition of the oil and lot referenced above on the date of analysis.

©Copyright 2022 by Essential Oil University. All rights reserved. Any publishing, copying, use, dissemination, or distribution of this report, including online, without the express written permission of Essential Oil University is strictly prohibited.

R.Time	Name	Area%
47.118	gamma-Elemene	0.02
47.338	trans-alpha-Bergamotene	0.54
47.551	Unidentified	0.03
48.508	(E)-beta-Farnesene	0.04
48.800	alpha-Humulene	0.03
48.974	epi-beta-Santalene	0.02
50.361	Germacrene D	0.04
50.513	trans-beta-Bergamotene	0.03
51.285	alpha-Selinene	0.01
51.479	(Z)-alpha-Bisabolene	0.07
51.682	(E,E)-alpha-Farnesene	0.12
51.931	beta-Bisabolene	0.79
53.858	(E)-alpha-Bisabolene	0.01
55.024	Germacrene B	0.06
60.779	Unidentified	0.01
61.477	Unidentified	0.02
62.282	alpha-Bisabolol	0.03
69.139	Hexadecanal	0.04
76.897	Citropten	0.14
80.434	Methoxsalen	0.03
87.995	Isopimpinellin	0.05
97.992	Oxypeucedanin	0.04
		100.00