

Sample Information

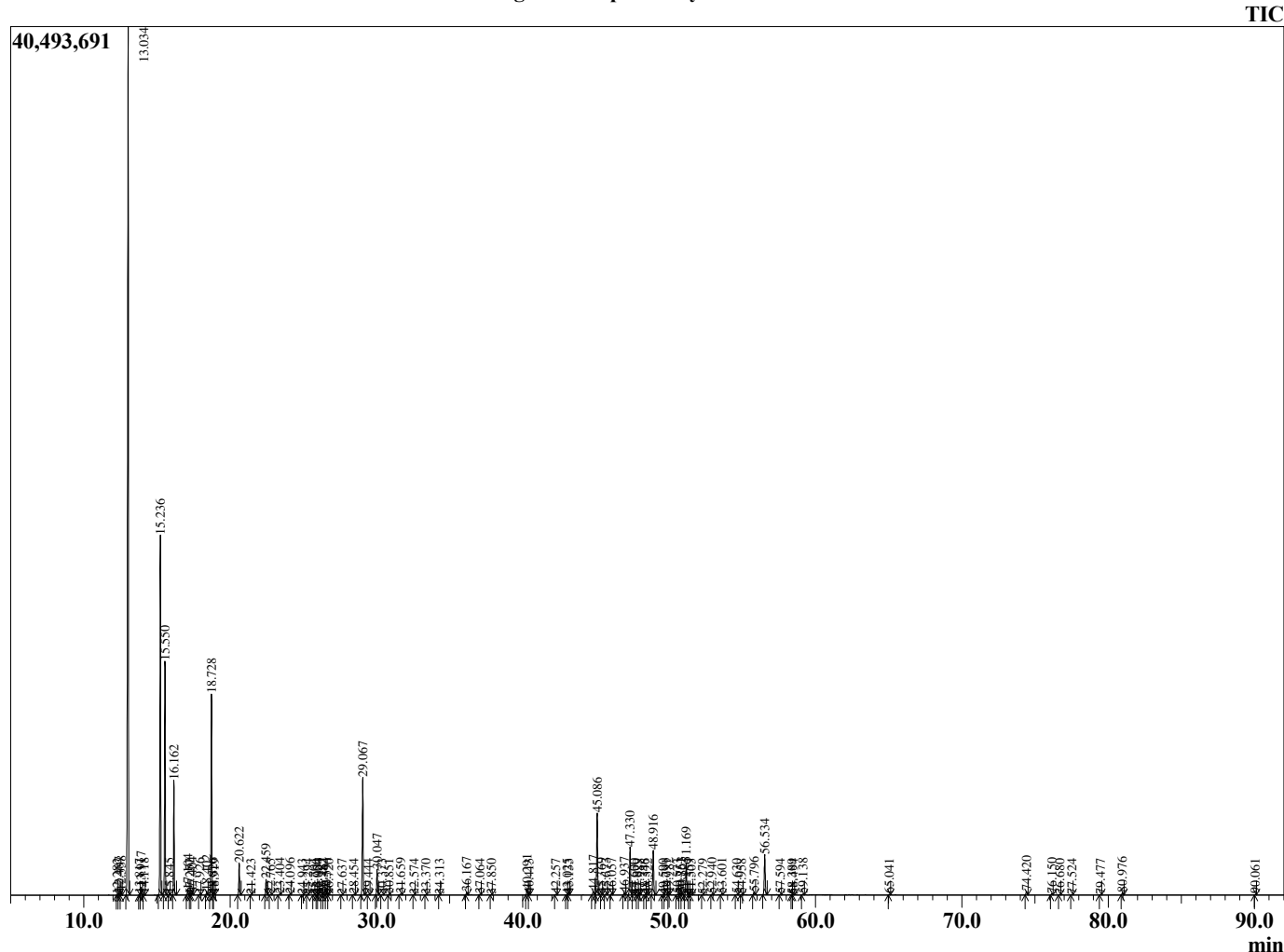
Analyzed by : Dr. Robert S. Pappas
 Analyzed : 11/12/2020 6:40:18 AM
 Sample Type : Essential Oil
 Sample Name : Juniper Berry Oil-Edens Garden
 Sample ID : BA29IZ
 Injection Volume : 0.10
 Instrument ID : GC-3



Peak Report TIC

R.Time	Name	Area%
12.282	Hashishene	0.01
12.407	Tricyclene	0.10
12.558	alpha-Thujene	0.14
13.034	alpha-Pinene	39.71
13.817	alpha-Fenchene	0.03
13.917	Camphene	0.29
14.118	Thuja-2,4(10)diene	0.04
15.236	Sabinene	13.90
15.550	beta-Pinene	8.79
15.845	Unidentified	0.03
16.162	Myrcene	4.39
17.104	Pseudolimonene	0.18
17.257	alpha-Phellandrene	0.01
17.404	delta-3-Carene	0.10
17.926	alpha-Terpinene	0.04
18.402	para-Cymene	0.16
18.728	Limonene	8.10
18.826	beta-Phellandrene	0.04
18.919	1,8-Cineole	0.03
20.622	gamma-Terpinene	1.30
21.423	trans-Sabinene hydrate	0.01
22.459	Terpinolene	0.65
22.765	Dehydro-para-cymene	0.03
23.404	alpha-Pinene oxide	0.06
24.096	Unidentified	0.04
24.943	trans-para-Mentha-2,8-dien-1-ol	0.01
25.294	alpha-Campholenal	0.02
25.704	cis-Limonene oxide	0.01
25.950	Unidentified	0.01
26.004	trans-Limonene oxide	0.02
26.282	trans-Pinocarveol	0.07
26.382	Epoxyterpinolene	0.03
26.591	Verbenol	0.08
26.720	Camphor	0.01
27.637	trans-Pinocamphone	0.01
28.454	Borneol	0.03
29.067	Terpinen-4-ol	5.43
29.444	para-Cymen-8-ol	0.03
30.047	alpha-Terpineol	1.17
30.373	Unidentified	0.02
30.851	Verbenone	0.03
31.659	trans-Carveol	0.05
32.574	cis-Carveol	0.01
33.370	Carvone	0.02
34.313	Unidentified	0.01
36.167	Bornyl acetate	0.12
37.064	Unidentified	0.03
37.850	Unidentified	0.01
40.291	alpha-Terpinyl acetate	0.25
40.413	gamma-Terpinyl acetate	0.03
42.257	alpha-Copaene	0.03
43.025	7-epi-Sesquithujene	0.02
43.133	beta-Elemene	0.03
44.817	alpha-Cedrene	0.24
45.086	trans-beta-Caryophyllene	4.16
45.369	beta-Cedrene	0.04
45.673	gamma-Elemene	0.04
46.057	cis-Thujopsene	0.05
46.937	Humulen-(v1)	0.11
47.330	alpha-Humulene	2.40
47.600	Alloaromadendrene	0.02
47.829	Unidentified	0.01

Chromatogram Juniper Berry Oil-Edens Garden



Comments:

The analysis of this Juniper Berry batch sample meets the expected chemical profile for authentic essential oil of *Juniperus communis*. No contamination or adulteration was detected. The results provided in this GCMS quality analysis reflect the chemical composition of the oil and lot referenced above on the date of analysis.

R.Time	Name	Area%
47.988	beta-Acoradiene	0.02
48.346	10-beta-H-Cadina-1(6),4-diene	0.02
48.522	trans-Cadina-1(6),4-diene	0.03
48.916	Germacrene D	2.25
49.590	trans-Muurolo-4(14),5-diene	0.01
49.791	Bicyclogermacrene	0.04
49.982	alpha-Muuroloene	0.03
50.573	Unidentified	0.04
50.751	alpha-Alaskene	0.06
50.863	gamma-Cadinene	0.07
51.169	delta-Cadinene	1.59
51.359	cis-Calamenene	0.01
51.503	Unidentified	0.01
52.279	Unidentified	0.01
52.940	alpha-Elemol	0.05
53.601	Germacrene B	0.06
54.630	Germacren D-4-ol	0.03
54.958	Caryophyllene oxide	0.04
55.796	Unidentified	0.13
56.534	Cedrol	2.09
57.594	1-epi-Cubenol	0.02
58.389	tau-Cadinol	0.01
58.494	epi-alpha-Cadinol	0.02
59.138	Unidentified	0.05
65.041	Cedryl acetate	0.02
74.420	Myrcene dimer I	0.19
76.150	Myrcene dimer II	0.06
76.680	Unidentified	0.02
77.524	Unidentified	0.01
79.477	Abietatriene	0.02
80.976	Abietadiene	0.11
90.061	4-epi-Abietal	0.02
		100.00