

Sample Information

Analyzed by : Dr. Robert S. Pappas  
 Analyzed : 4/6/2019 7:18:18 AM  
 Sample Type : Essential Oil  
 Sample Name : Indian Sandalwood - AI26CK  
 Sample ID : AI26CK  
 Injection Volume : 0.10  
 Instrument ID : GC-2

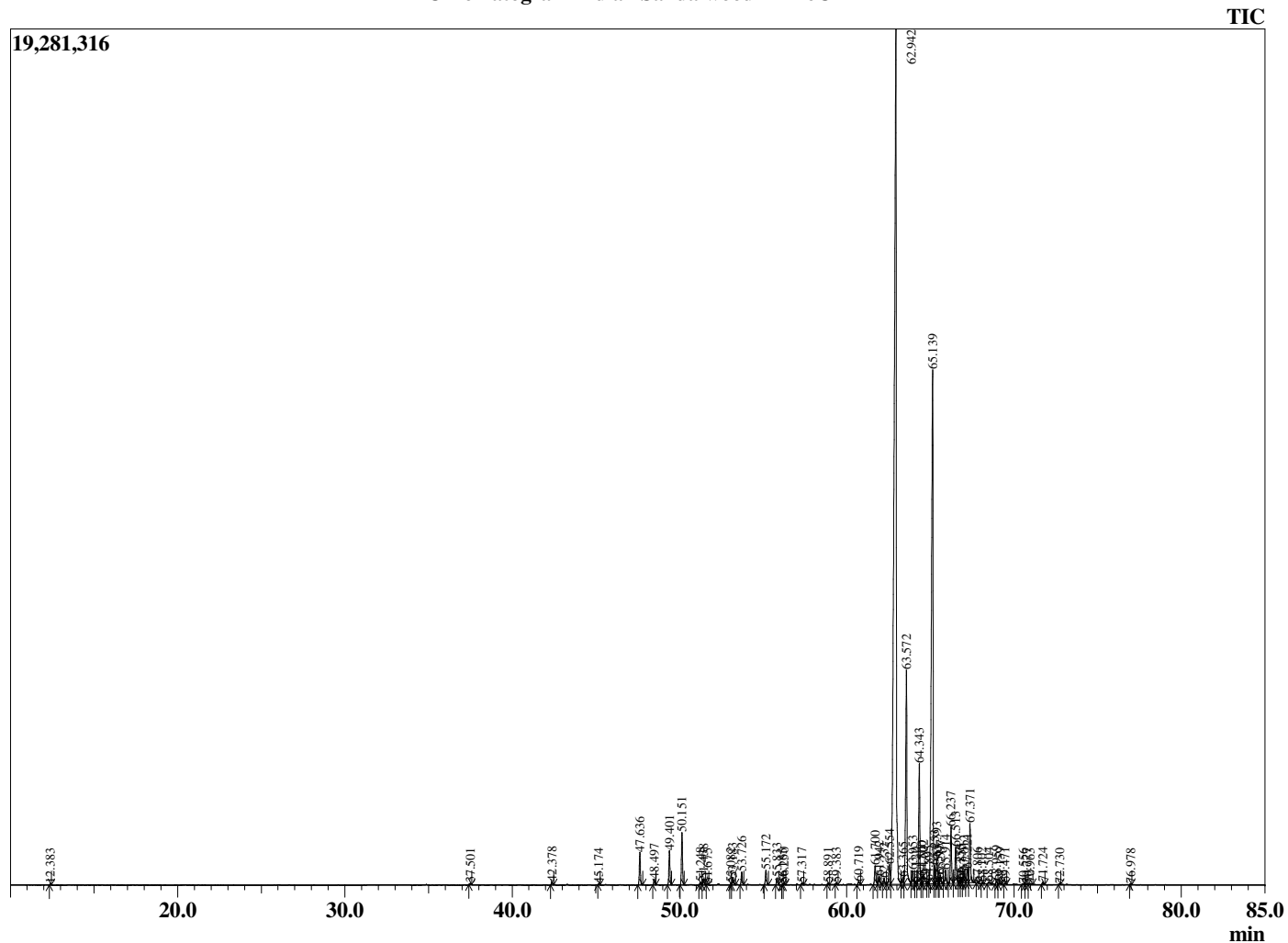


Peak Report TIC

R.Time	Name	Area%
12.383	Santene	0.03
37.501	Unidentified	0.04
42.378	Unidentified	0.10
45.174	Unidentified	0.02
47.636	alpha-Santalene	0.92
48.497	trans-alpha-Bergamotene	0.16
49.401	epi-beta-Santalene	0.96
50.151	beta-Santalene	1.47
51.248	gamma-Curcumene	0.07
51.438	Ar-Curcumene	0.16
51.675	Unidentified	0.02
53.082	beta-Bisabolene	0.05
53.183	beta-Curcumene	0.22
53.726	alpha-Teresantalic acid	0.37
55.172	alpha-Ekasantalic acid	0.46
55.833	alpha-Santalic acid	0.20
56.165	trans-Nerolidol	0.02
56.250	Unidentified	0.05
57.317	trans-Sesquibabinene hydrate	0.05
58.891	Unidentified	0.04
59.383	Unidentified	0.05
60.719	alpha-Acorenol	0.11
61.700	Khusilal	0.67
61.942	alpha-Santalal	0.32
62.232	Unidentified	0.17
62.554	beta-Elemene	0.75
62.942	(Z)-alpha-Santalol	49.10
63.365	Unidentified	0.26
63.572	(Z)-alpha-trans-Bergamotol	7.25
63.953	(E)-alpha-Santalol	0.50
64.120	Unidentified	0.03
64.343	epi-beta-Santalol	3.64
64.500	Unidentified	0.25
64.602	Bergamotol isomer	0.41
64.895	(2E,6E)-Farnesol	0.08
65.139	(Z)-beta-Santalol	22.15
65.253	Unidentified	0.55
65.393	(Z)-Nuciferol	0.84
65.515	Unidentified	0.08
65.597	epi-beta-Santalol	0.30
65.914	Unidentified	0.49
66.237	(E)-beta-Santalol	1.68
66.513	Unidentified	1.35
66.756	Unidentified	0.09
66.855	Santalol acetate isomer	0.12
67.012	(E)-Nuciferol	0.35
67.221	Unidentified	0.49
67.371	cis-Lanceol	1.86
67.806	Unidentified	0.02
68.102	Unidentified	0.04
68.504	Unidentified	0.10
68.959	Lanceol isomer	0.11
69.159	Unidentified	0.06
69.471	Unidentified	0.04
70.556	Unidentified	0.04
70.777	Unidentified	0.03
70.963	Unidentified	0.07
71.724	Unidentified	0.08
72.730	Unidentified	0.02
76.978	Unidentified	0.02
		100.00

This report is valid for 1 year from the analyzed date.

Chromatogram Indian Sandalwood - AI26CK



Comments:

The analysis of this Sandalwood, India batch sample meets the expected chemical profile for authentic essential oil of *Santalum album*. No contamination or adulteration was detected.