

Sample Information

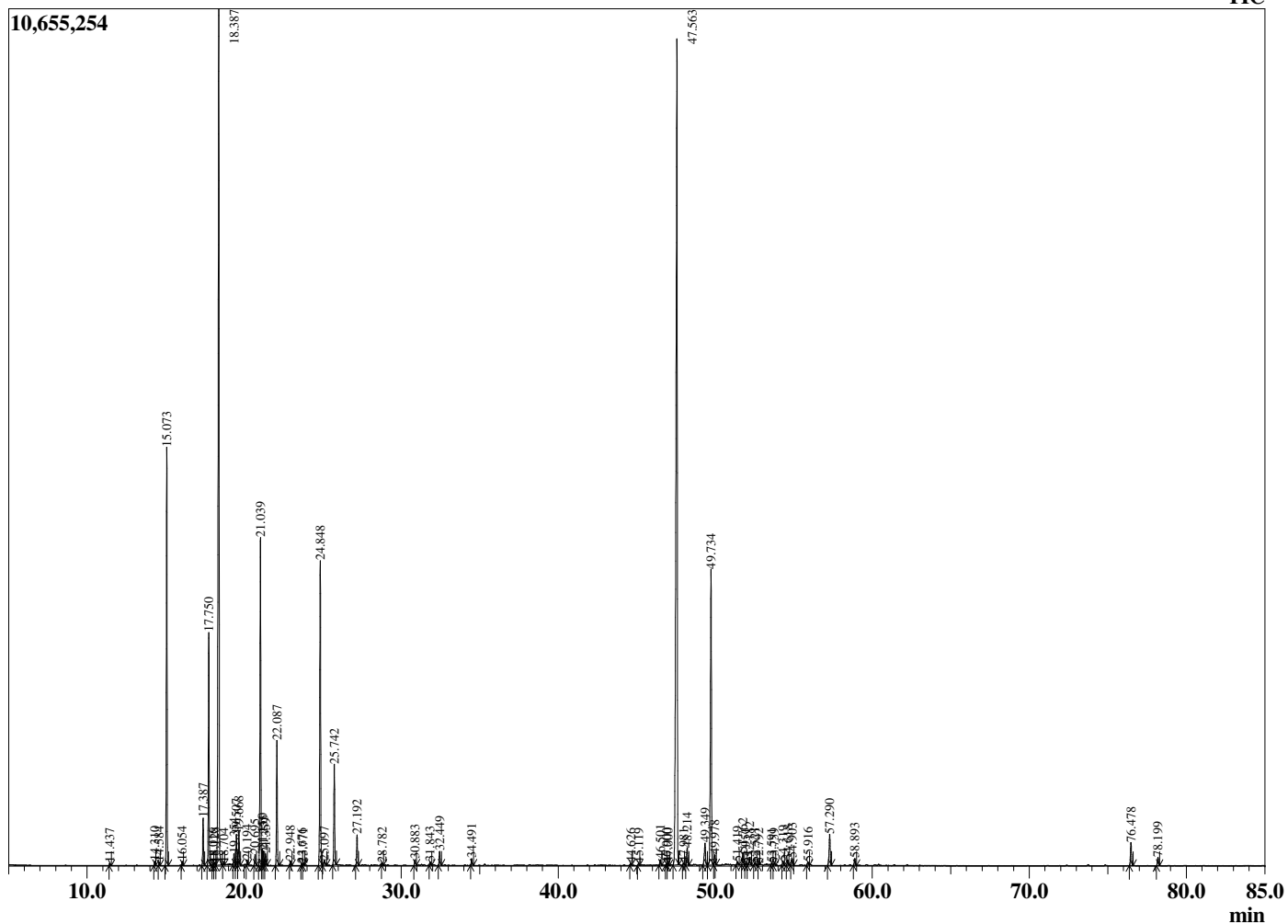
Analyzed by : Dr. Robert S. Pappas
 Analyzed : 7/12/2020 9:38:14 AM
 Sample Type : Essential Oil
 Sample Name : Hemp - Edens Garden
 Sample ID : BA18FW
 Injection Volume : 0.10
 Instrument ID : GC-2



Peak Report TIC

R.Time	Name	Area%
11.437	Hexanol	0.05
14.310	Hashishene	0.08
14.584	alpha-Thujene	0.07
15.073	alpha-Pinene	8.05
16.054	Camphene	0.08
17.387	Sabinene	0.95
17.750	beta-Pinene	4.68
18.016	Unidentified	0.04
18.128	3-para-Menthene	0.06
18.387	Myrcene	21.19
18.704	Mesitylene	0.03
19.354	Pseudolimonene	0.24
19.507	alpha-Phellandrene	0.63
19.668	delta-3-Carene	0.69
20.194	alpha-Terpinene	0.11
20.695	para-Cymene	0.22
21.039	Limonene	7.18
21.150	beta-Phellandrene	0.32
21.235	1,8-Cineole	0.29
21.359	cis-beta-Ocimene	0.24
22.087	trans-beta-Ocimene	2.65
22.948	gamma-Terpinene	0.10
23.676	1-Octanol	0.04
23.771	trans-Sabinene hydrate	0.05
24.848	Terpinolene	7.12
25.097	Fenchone	0.15
25.742	Linalool	2.25
27.192	alpha-Fenchol	0.70
28.782	Unidentified	0.06
30.883	Borneol	0.13
31.843	para-Cymen-8-ol	0.08
32.449	alpha-Terpineol	0.33
34.491	Citronellol	0.16
44.626	alpha-Copaene	0.05
45.119	Hexyl hexanoate	0.04
46.501	cis-beta-Caryophyllene	0.14
46.900	Unidentified	0.04
47.000	cis-alpha-Bergamotene	0.05
47.563	beta-Caryophyllene	27.91
47.981	gamma-Elemene	0.04
48.214	trans-alpha-Bergamotene	0.42
49.349	trans-beta-Farnesene	0.72
49.734	alpha-Humulene	8.03
49.978	Alloaromadendrene	0.25
51.419	Unidentified	0.10
51.762	beta-Selinene	0.29
51.951	gamma-Amorphene	0.04
52.182	alpha-Selinene	0.21
52.521	(E,E)-alpha-Farnesene	0.08
52.792	beta-Bisabolene	0.03
53.591	Selina-3,7(11)-diene	0.05
53.759	beta-Sesquiphellandrene	0.05
54.319	alpha-Maaline	0.11
54.618	Eremophilene isomer	0.14
54.903	Selina-3,7(11)-diene	0.18
55.916	Germacrene B	0.10
57.290	Caryophyllene oxide	0.90
58.893	Humulene epoxide II	0.18
76.478	Myrcene dimer I	0.62
78.199	Myrcene dimer II	0.22
		100.00

Chromatogram Hemp - Edens Garden



Comments:

The analysis of this Hemp batch sample meets the expected chemical profile for authentic essential oil of *Cannabis sativa*. No contamination or adulteration was detected. The results provided in this GCMS quality analysis reflect the chemical composition of the oil and lot referenced above on the date of analysis.