

Sample Information

Analyzed by : Dr. Robert S. Pappas  
 Analyzed : 5/31/2019 5:11:20 AM  
 Sample Type : Essential Oil  
 Sample Name : Hemp - Edens Garden  
 Sample ID : AI13EA  
 Injection Volume : 0.10  
 Instrument ID : GC-3

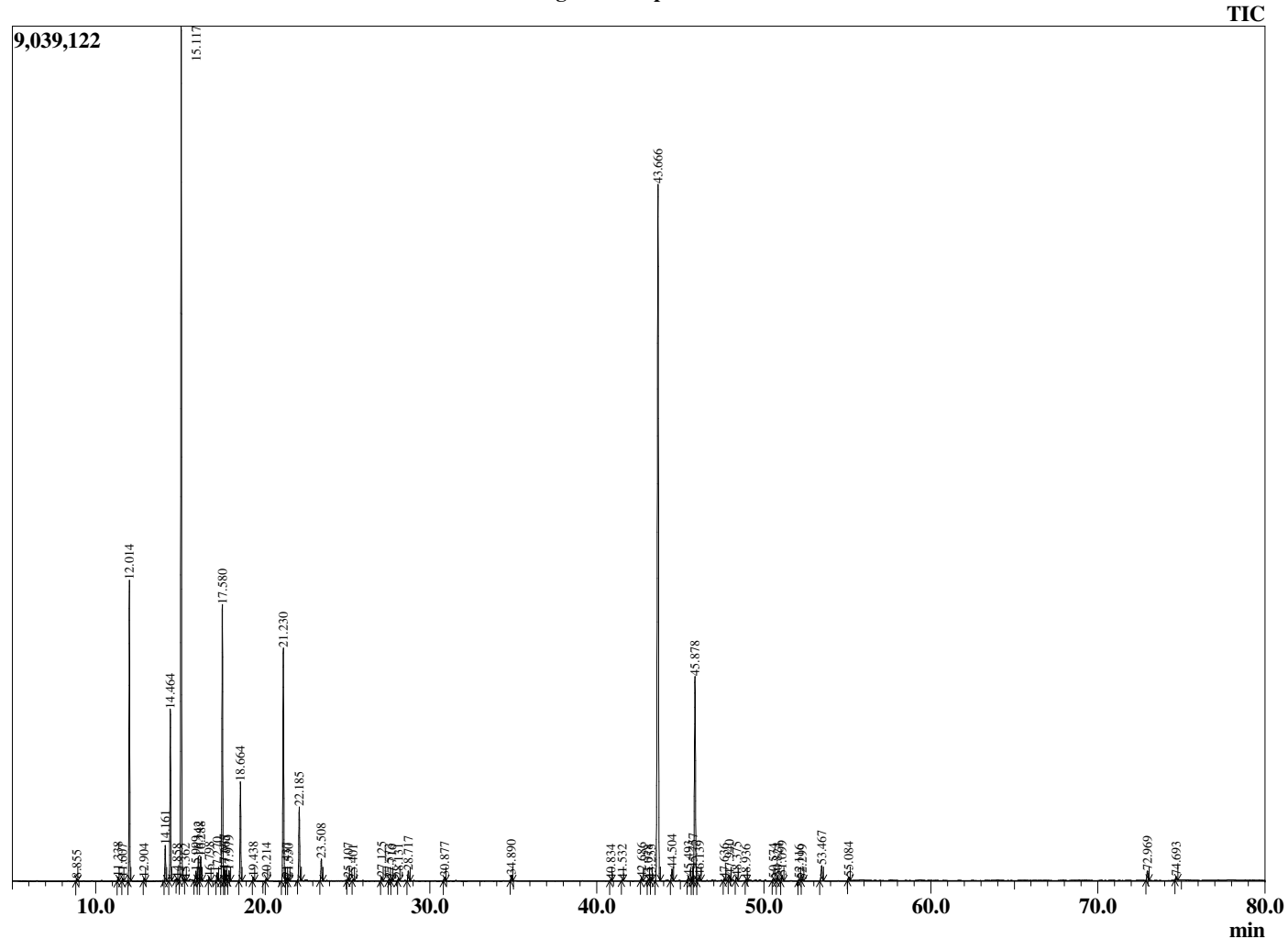


Peak Report TIC

R.Time	Name	Area%
8.855	n-Hexanol	0.05
11.338	Hashishene	0.10
11.607	alpha-Thujene	0.07
12.014	alpha-Pinene	7.35
12.904	Camphene	0.07
14.161	Sabinene	0.94
14.464	beta-Pinene	4.65
14.858	3-para-Menthene	0.03
15.117	Myrcene	23.27
15.362	Unidentified	0.04
15.999	Pseudolimonene	0.30
16.142	alpha-Phellandrene	0.67
16.288	delta-3-Carene	0.68
16.798	alpha-Terpinene	0.11
17.270	para-Cymene	0.23
17.580	Limonene	7.86
17.677	beta-Phellandrene	0.27
17.765	1,8-Cineole	0.30
17.979	cis-beta-Ocimene	0.29
18.664	trans-beta-Ocimene	2.87
19.438	gamma-Terpinene	0.11
20.214	Octanol	0.08
21.230	Terpinolene	6.99
21.437	Fenchone	0.10
21.530	para-Cymenene	0.08
22.185	Linalool	2.21
23.508	alpha-Fenchol	0.69
25.107	Unidentified	0.10
25.401	Camphor	0.03
27.125	Borneol	0.13
27.573	Unidentified	0.06
27.716	Terpinen-4-ol	0.03
28.131	para-Cymen-8-ol	0.07
28.717	alpha-Terpineol	0.34
30.877	Citronellol	0.13
34.890	(E)-Anethole	0.18
40.834	alpha-Copaene	0.04
41.532	Hexyl hexanoate	0.03
42.686	cis-beta-Caryophyllene	0.11
43.078	Unidentified	0.04
43.255	cis-alpha-Bergamotene	0.03
43.666	beta-Caryophyllene	27.20
44.504	trans-alpha-Bergamotene	0.41
45.493	Humulen-(v1)	0.17
45.757	trans-beta-Farnesene	0.37
45.878	alpha-Humulene	7.80
46.139	Alloaromadendrene	0.21
47.636	Unidentified	0.08
47.940	beta-Selinene	0.18
48.375	alpha-Selinene	0.14
48.936	(E,E)-alpha-Farnesene	0.03
50.574	alpha-Maalinene	0.08
50.824	Eremophilene isomer	0.12
51.099	Selina-3,7(11)-diene	0.18
52.116	Germacrene B	0.05
52.299	Unidentified	0.03
53.467	Caryophyllene oxide	0.60
55.084	Humulene epoxide II	0.11
72.969	Myrcene dimer I	0.36
74.693	Myrcene dimer II	0.13
		100.00

This report is valid for 1 year from the analyzed date.

Chromatogram Hemp - Edens Garden



Comments:

The analysis of this Hemp Oil batch sample meets the expected chemical profile for authentic essential oil of *Cannabis sativa*. No contamination or adulteration was detected.