

Sample Information

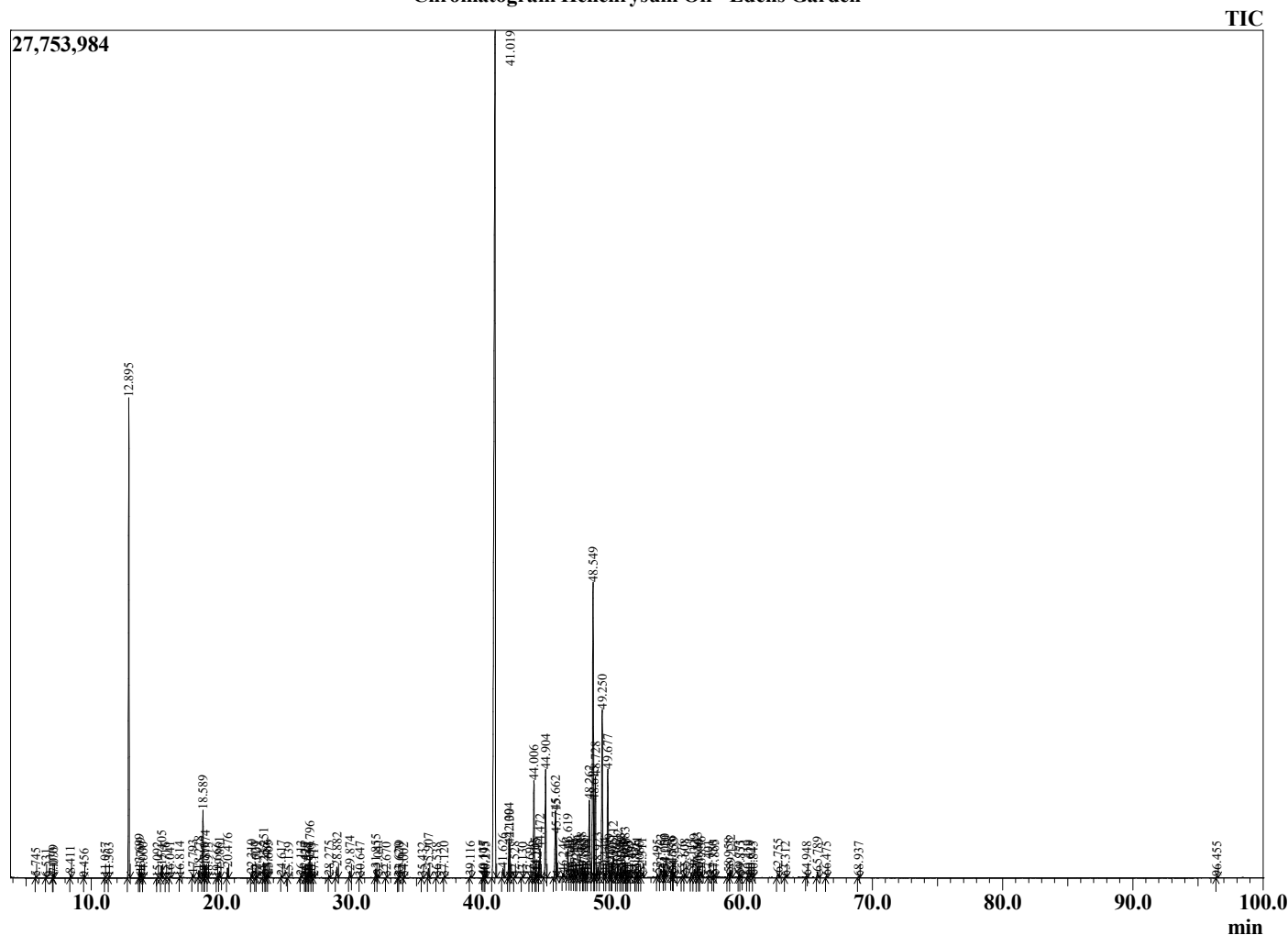
Analyzed by : Dr. Robert S. Pappas
 Analyzed : 7/13/2022 9:51:01 PM
 Sample Type : Essential Oil
 Sample Name : Helichrysum Oil - Edens Garden
 Sample ID : EG Lot #BB10GAB
 Injection Volume : 0.10
 Instrument ID : GC-3



Peak Report TIC

R.Time	Name	Area%
5.745	2-Methyl-3-pentanone	0.02
6.531	Unidentified	0.01
7.070	Octane	0.01
7.099	2-Methyl-2-heptene	0.06
8.411	4-Methyl-3-hexanone	0.06
9.456	2-Methyloctane	0.01
11.057	Nonane	0.01
11.363	Bornylene	0.01
12.895	alpha-Pinene	10.07
13.699	alpha-Fenchene	0.17
13.799	Camphene	0.10
14.000	Thuja-2,4(10)-diene	0.01
15.092	Sabinene	0.01
15.405	beta-Pinene	0.25
15.716	6-Methyl hept-5-en-2-one	0.01
16.041	Myrcene + Unidentified	0.04
16.814	Isobutyl 2-methylbutyrate	0.02
17.793	alpha-Terpinene	0.07
18.278	para-Cymene	0.16
18.589	Limonene	1.41
18.710	beta-Phellandrene	0.01
18.774	1,8-Cineole	0.26
18.973	cis-beta-Ocimene	0.01
19.666	trans-beta-Ocimene	0.01
19.861	Isobutyl angelate	0.14
20.476	gamma-Terpinene	0.23
22.310	Terpinolene	0.08
22.627	2-Nonanone	0.03
22.709	2,4-Dimethyl-heptane-3,5-dione (Italidione)	0.03
23.251	Linalool	0.37
23.355	2-Nonanol	0.01
23.486	2-Methylbutyl-2-methylbutyrate	0.08
23.605	Nonanal	0.05
24.617	Fenchyl alcohol	0.04
25.139	alpha-Campholenal	0.01
26.113	trans-Pinocarveol	0.04
26.427	trans-Verbenol	0.01
26.529	Isoamyl angelate	0.02
26.647	2,2,6-Trimethyl-3,5-heptanedione analogue	0.01
26.796	Isoamyl tiglate	0.53
26.919	para-vinyl-Anisole analogue	0.01
27.117	Camphene hydrate	0.02
28.275	Borneol	0.05
28.882	Italidione	0.36
29.874	alpha-Terpineol	0.18
30.647	Decanal	0.03
31.855	Nerol	0.22
32.041	Unidentified	0.08
32.670	Hexyl-2-methylbutyrate	0.02
33.620	Linalyl acetate	0.01
33.679	Unidentified	0.05
34.002	Unidentified	0.02
35.432	Unidentified	0.02
35.907	Hexyl angelate	0.24
36.538	2-Undecanone	0.02
37.120	Tridecane	0.02
39.116	Dihydrocarvyl acetate	0.04
40.117	alpha-Terpinyl acetate	0.05
40.175	Unidentified	0.01
40.295	Unidentified	0.02
41.019	Neryl acetate	37.78
41.626	Cyclosativene	0.33

Chromatogram Helichrysum Oil - Edens Garden



Comments:

The analysis of this Helichrysum Oil batch sample meets the expected chemical profile for authentic essential oil of Helichrysum italicum.

No contamination or adulteration was detected. The results provided in this GCMS quality analysis reflect the chemical composition of the oil and lot referenced above on the date of analysis.

©Copyright 2022 by Essential Oil University. All rights reserved. Any publishing, copying, use, dissemination, or distribution of this report, including online, without the express written permission of Essential Oil University is strictly prohibited.

R.Time	Name	Area%
42.094	alpha-Copaene	1.10
42.130	Isoitalicene	0.75
42.528	Unidentified	0.02
43.130	Sativene	0.02
43.696	Tetradecane	0.02
44.006	Italicene	2.81
44.105	Italicene analogue	0.10
44.245	Italicene analogue	0.12
44.472	cis-alpha-Bergamotene	0.81
44.904	trans-beta-Caryophyllene	3.15
45.662	4,6,9-Trimethyldec-8-en-3,5-dione (Italidione)	2.32
45.715	trans-alpha-Bergamotene	0.65
46.246	6,9-Guaiadiene	0.09
46.619	Neryl propionate	0.75
46.741	Unidentified	0.05
46.943	trans-beta-Farnesene	0.07
47.136	alpha-Humulene	0.19
47.248	Amorpha-4,11-diene	0.04
47.356	Alloaromadendrene	0.28
47.658	alpha-Acoradiene	0.28
47.805	Unidentified	0.10
47.887	beta-Acoradiene	0.23
48.044	4,5-di-epi-Aristolochene	0.12
48.262	Selina-4,11-diene + 5,7,10-Trimethylundec-9-	2.80
48.549	gamma-Curcumene	9.70
48.615	Unidentified	0.99
48.728	Ar-Curcumene	2.82
48.923	trans-beta-Bergamotene	0.33
49.250	beta-Selinene	5.29
49.444	trans-Murrola-4(14),5-diene	0.15
49.677	alpha-Selinene	3.36
49.799	alpha-Muurolene	0.21
50.005	Unidentified	0.06
50.112	Unidentified	0.71
50.362	beta-Bisabolene	0.13
50.462	beta-Curcumene	0.40
50.683	gamma-Cadinene	0.26
50.740	Unidentified	0.08
50.983	delta-Cadinene	0.47
51.060	(-)-alpha-Panasinsen	0.06
51.170	trans-Calamenene	0.02
51.265	Zonarene	0.06
51.492	trans-gamma-Bisabolene	0.05
51.826	trans-Cadina-1,4-diene	0.06
51.931	Unidentified	0.16
52.086	alpha-Cadinene	0.04
52.311	trans-alpha-Bisabolene	0.15
53.495	trans-Nerolidol	0.09
53.763	Italidione	0.33
54.050	Italidione	0.23
54.110	Italidione	0.14
54.576	Neryl isovalerate + Unidentified	0.20
54.665	Unidentified	0.06
54.759	Caryophyllene oxide	0.16
55.376	Unidentified	0.05
55.608	Guaiol	0.09
56.111	Unidentified	0.14
56.329	Copaborneol	0.23
56.563	Rosifoliol	0.30
56.640	Unidentified	0.05
56.836	Unidentified	0.17
57.401	Epicubenol	0.04
57.750	Epicubenol analogue	0.05

R.Time	Name	Area%
57.865	beta-Eudesmol	0.07
58.958	alpha-Eudesmol	0.17
59.122	Intermedeol	0.22
59.771	epi-beta-Bisabolol	0.09
59.855	beta-Bisabolol	0.04
60.419	Unidentified	0.05
60.629	alpha-Bisabolol	0.03
60.845	Unidentified	0.03
62.755	Geraniol hexanoate	0.15
63.312	Unidentified	0.03
64.948	Unidentified	0.03
65.789	Unidentified	0.18
66.475	Unidentified	0.04
68.937	Phytone	0.03
96.455	Unidentified	0.03
		100.00