

Sample Information

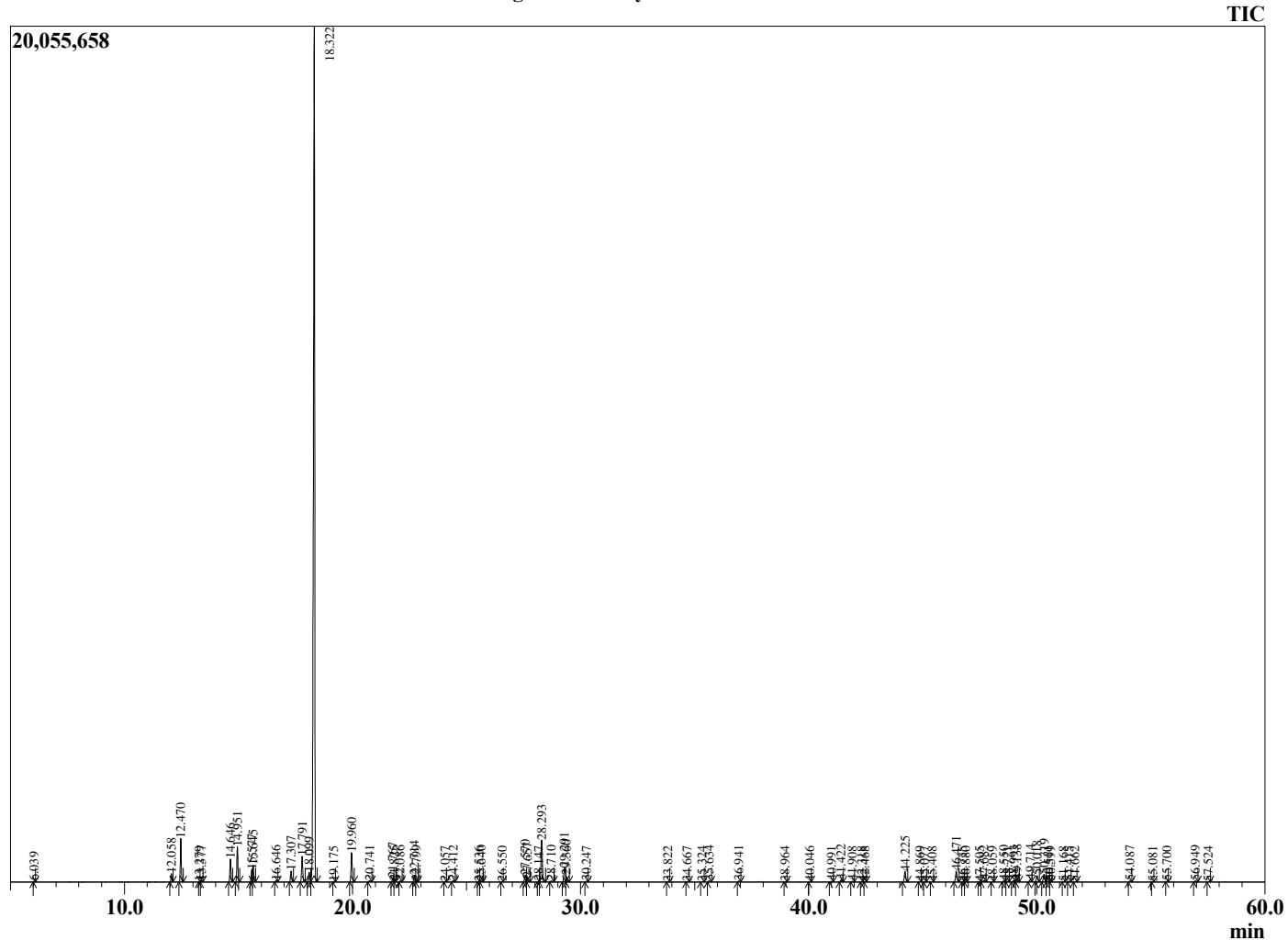
Analyzed by : Dr. Robert S. Pappas
 Analyzed : 11/20/2020 8:35:37 PM
 Sample Type : Essential Oil
 Sample Name : Helichrysum Oil-Edens Garden
 Sample ID : BA29IX
 Injection Volume : 0.10
 Instrument ID : GC-4



Peak Report TIC

R.Time	Name	Area%
6.039	Unidentified	0.04
12.058	alpha-Thujene	0.51
12.470	alpha-Pinene	2.76
13.279	alpha-Fenchene	0.01
13.377	Camphene	0.05
14.646	Sabinene	1.55
14.951	beta-Pinene	2.43
15.577	Myrcene	0.77
15.645	2,3-Dehydro-1,8-Cineole	1.17
16.646	alpha-Phellandrene	0.10
17.307	alpha-Terpinene	0.81
17.791	para-Cymene	1.98
18.099	Limonene	0.83
18.322	1,8-cineole	71.55
19.175	(E)-beta-Ocimene	0.02
19.960	gamma-Terpinene	2.20
20.741	trans-Sabinene hydrate	0.11
21.767	Terpinolene	0.33
21.825	trans-Linalool oxide (furanoid)	0.05
22.086	Dehydro-para-cymene	0.07
22.714	Linalool	0.50
22.799	cis-Sabinene hydrate	0.10
24.057	alpha-Fenchol	0.02
24.412	cis-p-menth-2-en-1-ol	0.11
25.536	trans-Pinocarveol	0.03
25.640	trans-p-menth-2-en-1-ol	0.08
26.550	Unidentified	0.01
27.570	delta-Terpineol	0.57
27.657	para-Mentha-1,5-dien-8-ol	0.34
28.147	Unidentified	0.03
28.293	Terpinen-4-ol	3.52
28.710	para-Cymen-8-ol	0.08
29.291	alpha-Terpineol	1.41
29.360	Unidentified	0.30
30.247	Unidentified	0.05
33.822	Unidentified	0.03
34.667	Unidentified	0.02
35.324	Lavandulyl acetate	0.05
35.634	Unidentified	0.10
36.941	Unidentified	0.08
38.964	Unidentified	0.03
40.046	Unidentified	0.03
40.991	Cyclosativene	0.07
41.422	alpha-Copaene	0.19
41.908	Unidentified	0.06
42.318	beta-Elemene	0.02
42.468	Sativene	0.01
44.225	trans-beta-Caryophyllene	0.98
44.869	beta-Copaene	0.02
45.077	trans-alpha-Bergamotene	0.01
45.408	Aromadendrene	0.03
46.471	alpha-Humulene	1.03
46.735	Unidentified	0.00
46.880	cis-Cadina-1(6),4-diene	0.02
47.505	10-beta-H-Cadina-1(6),4-diene	0.04
47.682	trans-Cadina-1(6),4-diene	0.15
48.059	alpha-Curcumene	0.03
48.550	beta-Selinene	0.08
48.721	Unidentified	0.05
48.993	alpha-Selinene	0.14
49.138	alpha-Muurolene	0.23
49.714	beta-Bisabolene	0.20

Chromatogram Helichrysum Oil-Edens Garden



Comments:

The analysis of this Helichrysum batch sample meets the expected chemical profile for authentic essential oil of *Helichrysum gymnocephalum*. No contamination or adulteration was detected. The results provided in this GCMS quality analysis reflect the chemical composition of the oil and lot referenced above on the date of analysis.

R.Time	Name	Area%
50.018	gamma-Cadinene	0.59
50.319	delta-Cadinene	0.73
50.511	trans-calamenene	0.09
50.599	Zonarene	0.04
51.168	trans-Cadina-1,4-diene	0.02
51.415	alpha-Muurolene	0.06
51.662	trans-alpha-Bisabolene	0.04
54.087	Caryophyllene oxide	0.08
55.081	Unidentified	0.02
55.700	Humulene epoxide II	0.03
56.949	Unidentified	0.10
57.524	tau-Cadinol	0.03
		100.00