

Sample Information

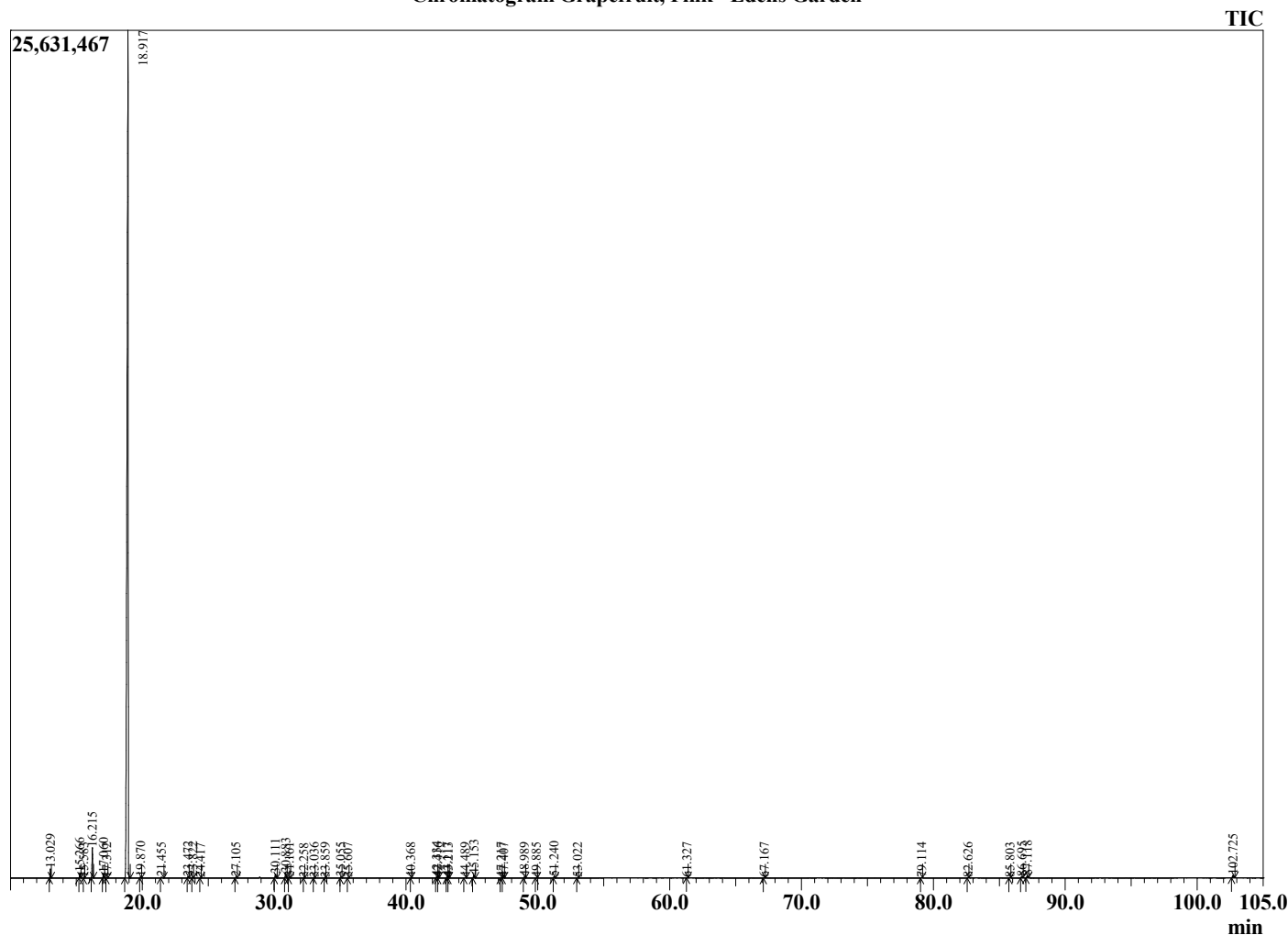
Analyzed by : Dr. Robert S. Pappas  
 Analyzed : 7/27/2022 9:58:05 AM  
 Sample Type : Essential Oil  
 Sample Name : Grapefruit, Pink - Edens Garden  
 Sample ID : EG Lot #BB19JR  
 Injection Volume : 0.10  
 Instrument ID : GC-3



Peak Report TIC

R.Time	Name	Area%
13.029	alpha-Pinene	0.49
15.266	Sabinene	0.31
15.583	beta-Pinene	0.03
16.215	Myrcene	1.77
17.060	Octanal	0.28
17.312	alpha-Phellandrene	0.03
18.917	Limonene	94.55
19.870	trans-beta-Ocimene	0.08
21.455	Octanol	0.07
23.472	Linalool	0.09
23.822	Nonanal	0.07
24.417	Unidentified	0.01
27.105	Citronellal	0.06
30.111	alpha-Terpineol	0.28
30.883	Decanal	0.33
31.161	Octyl acetate	0.06
32.258	Citronellol	0.01
33.036	Neral	0.03
33.859	Geraniol	0.01
35.055	Geranial	0.07
35.607	Perillaldehyde	0.01
40.368	alpha-Terpinyl acetate	0.01
42.334	alpha-Copaene	0.09
42.416	Geranyl acetate	0.03
43.117	beta-Cubebene	0.07
43.213	beta-Elemene	0.03
44.489	Dodecanal	0.04
45.153	beta-Caryophyllene	0.23
47.217	trans-beta-Farnesene	0.02
47.407	alpha-Humulene	0.03
48.989	Germacrene D	0.06
49.885	Bicyclogermacrene	0.03
51.240	delta-Cadinene	0.09
53.022	Elemol	0.03
61.327	Unidentified	0.01
67.167	Nootkatone	0.04
79.114	Sphondin	0.02
82.626	Osthole	0.03
85.803	7-Methoxy-8-(2-formyl-2-methylpropyl)coum	0.02
86.695	7-Methoxy-8-(2-oxo-3-methylbutyl)coumarin	0.09
87.118	Unidentified furanocoumarin	0.15
102.725	Aurapten	0.23
		100.00

Chromatogram Grapefruit, Pink - Edens Garden



Comments:

The analysis of this Grapefruit, Pink batch sample meets the expected chemical profile for authentic essential oil of Citrus paradisi.

No contamination or adulteration was detected. The results provided in this GCMS quality analysis reflect the chemical composition of the oil and lot referenced above on the date of analysis.