

Sample Information

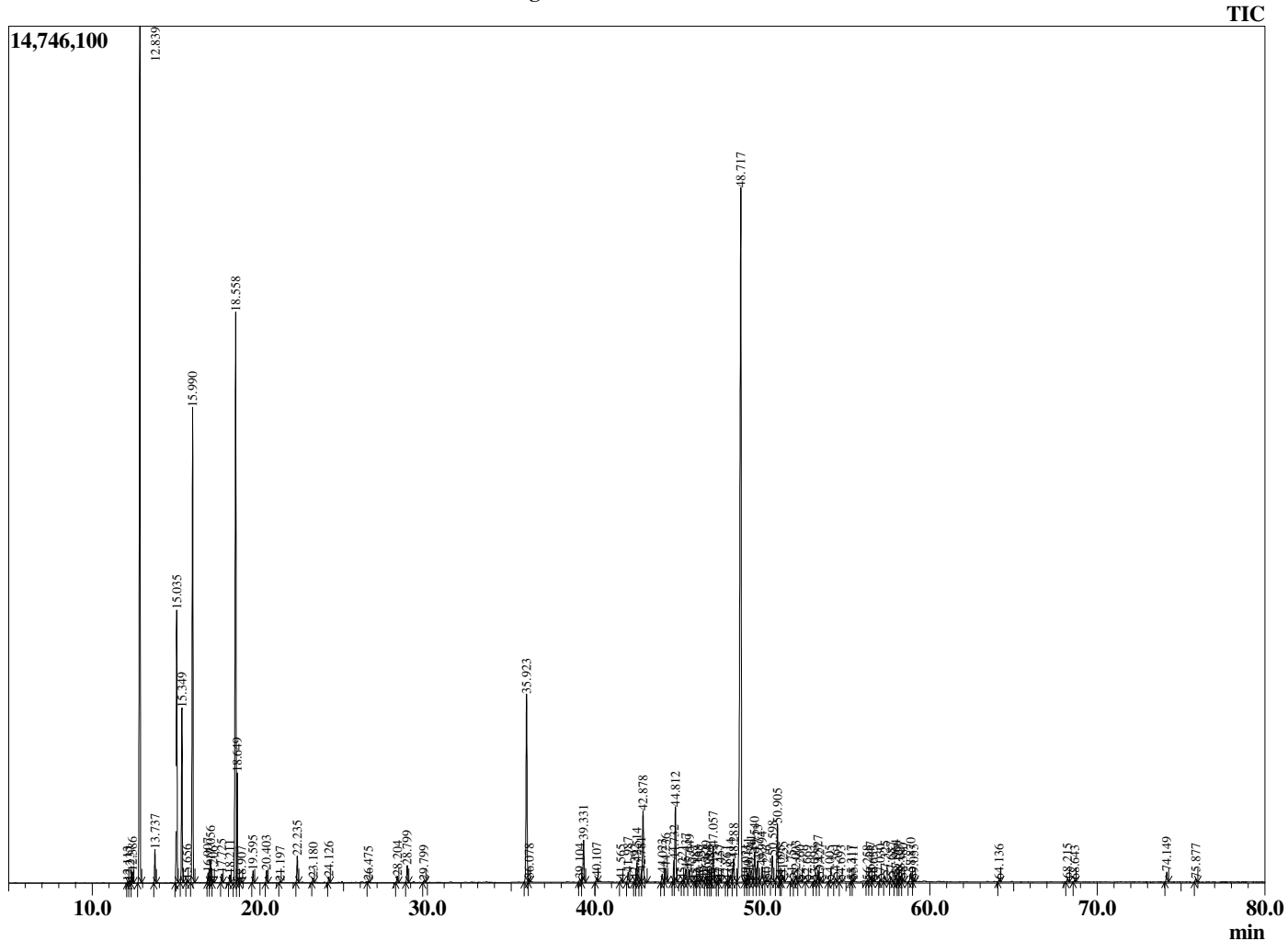
Analyzed by : Dr. Robert S. Pappas  
 Analyzed : 3/6/2021 8:19:09 PM  
 Sample Type : Essential Oil  
 Sample Name : Goldenrod - Eden's Garden  
 Sample ID : BB22AN  
 Injection Volume : 0.10  
 Instrument ID : GC-3



Peak Report TIC

R.Time	Name	Area%
12.113	Hashishene	0.03
12.237	Tricyclene	0.02
12.386	alpha-Thujene	0.19
12.839	alpha-Pinene	17.25
13.737	Camphene	0.61
15.035	Sabinene	5.27
15.349	beta-Pinene	3.29
15.656	Unidentified	0.05
15.990	Myrcene	9.56
16.907	Pseudolimonene	0.19
17.056	alpha-Phellandrene	0.43
17.206	delta-3-Carene	0.02
17.725	alpha-Terpinene	0.16
18.211	para-Cymene	0.16
18.558	Limonene	13.52
18.649	beta-Phellandrene	1.92
18.907	(Z)-beta-Ocimene	0.02
19.595	(E)-beta-Ocimene	0.25
20.403	gamma-Terpinene	0.25
21.197	trans-Sabinene hydrate	0.02
22.235	Terpinolene	0.55
23.180	Linalool	0.09
24.126	Unidentified	0.12
26.475	Camphor	0.03
28.204	Borneol	0.15
28.799	Terpinen-4-ol	0.39
29.799	alpha-Terpineol	0.05
35.923	Bornyl acetate	4.64
36.078	Isobornyl acetate	0.08
39.104	Elemene isomer	0.08
39.331	delta-Elemene	1.06
40.107	alpha-Cubebene	0.11
41.565	alpha-Ylangene	0.08
41.987	alpha-Copaene	0.25
42.392	Elemene isomer	0.06
42.514	beta-Bourbonene	0.49
42.781	beta-Cubebene	0.22
42.878	beta-Elemene	1.91
44.023	alpha-Gurjunene	0.20
44.236	Unidentified	0.36
44.732	beta-Ylangene	0.42
44.812	trans-beta-Caryophyllene	2.02
45.221	Unidentified	0.04
45.437	beta-Copaene	0.41
45.649	trans-alpha-Bergamotene	0.34
45.987	Aromadendrene	0.03
46.168	6,9-Guanidiene	0.04
46.357	Unidentified	0.08
46.629	cis-Murrola-3,5-diene	0.18
46.768	trans-Murrola-3,5-diene	0.08
46.885	(E)-beta-Farnesene	0.03
47.057	alpha-Humulene	0.94
47.323	cis-Murrola-4(14),5-diene	0.04
47.457	cis-Cadina-1(6),4-diene	0.08
47.861	10-beta-H-Cadina1(6),4-diene	0.03
48.114	Unidentified	0.25
48.288	trans-Cadina-1(6),4-diene	0.75
48.717	Germacrene D	22.09
49.021	delta-Selinene	0.06
49.151	beta-Selinene	0.23
49.341	trans-Muuro1a-4(14),5-diene	0.42
49.540	Bicyclogermacrene	0.84

Chromatogram Goldenrod - Eden's Garden



Comments:

The analysis of this Goldenrod batch sample meets the expected chemical profile for authentic essential oil of *Solidago canadensis*. No contamination or adulteration was detected. The results provided in this GCMS quality analysis reflect the chemical composition of the oil and lot referenced above on the date of analysis.

R.Time	Name	Area%
49.723	alpha-Muurolene	0.61
49.994	Unidentified	0.49
50.276	beta-Bisabolene	0.04
50.598	gamma-Cadinene	0.67
50.905	delta-Cadinene	1.49
51.095	trans-Calamenene	0.03
51.235	beta-Sesquiphellandrene	0.17
51.753	trans-Cadina-1,4-diene	0.08
52.003	alpha-Cadinene	0.17
52.260	alpha-Calacorene	0.05
52.669	alpha-Elemol	0.04
53.093	Unidentified	0.02
53.327	Germacrene B	0.31
53.427	(E)-Nerolidol	0.11
54.005	Unidentified	0.04
54.361	Spathulenol	0.10
54.693	Caryophyllene oxide	0.04
55.317	Unidentified	0.03
55.411	Viridiflorol	0.04
56.258	Unidentified	0.03
56.447	Unidentified	0.13
56.633	Unidentified	0.03
57.030	Humulane-1,6-dien-3-ol	0.05
57.325	Unidentified	0.14
57.687	Unidentified	0.13
57.964	Unidentified	0.18
58.127	tau-Cadinol	0.09
58.227	epi-alpha-Muurolol	0.17
58.380	delta-Cadinol	0.08
58.870	alpha-Cadinol	0.31
59.055	Unidentified	0.05
64.136	Unidentified	0.06
68.215	Unidentified	0.09
68.643	Neophytadiene	0.04
74.149	Myrcene dimer I	0.27
75.877	Myrcene dimer II	0.09
		100.00