

Sample Information

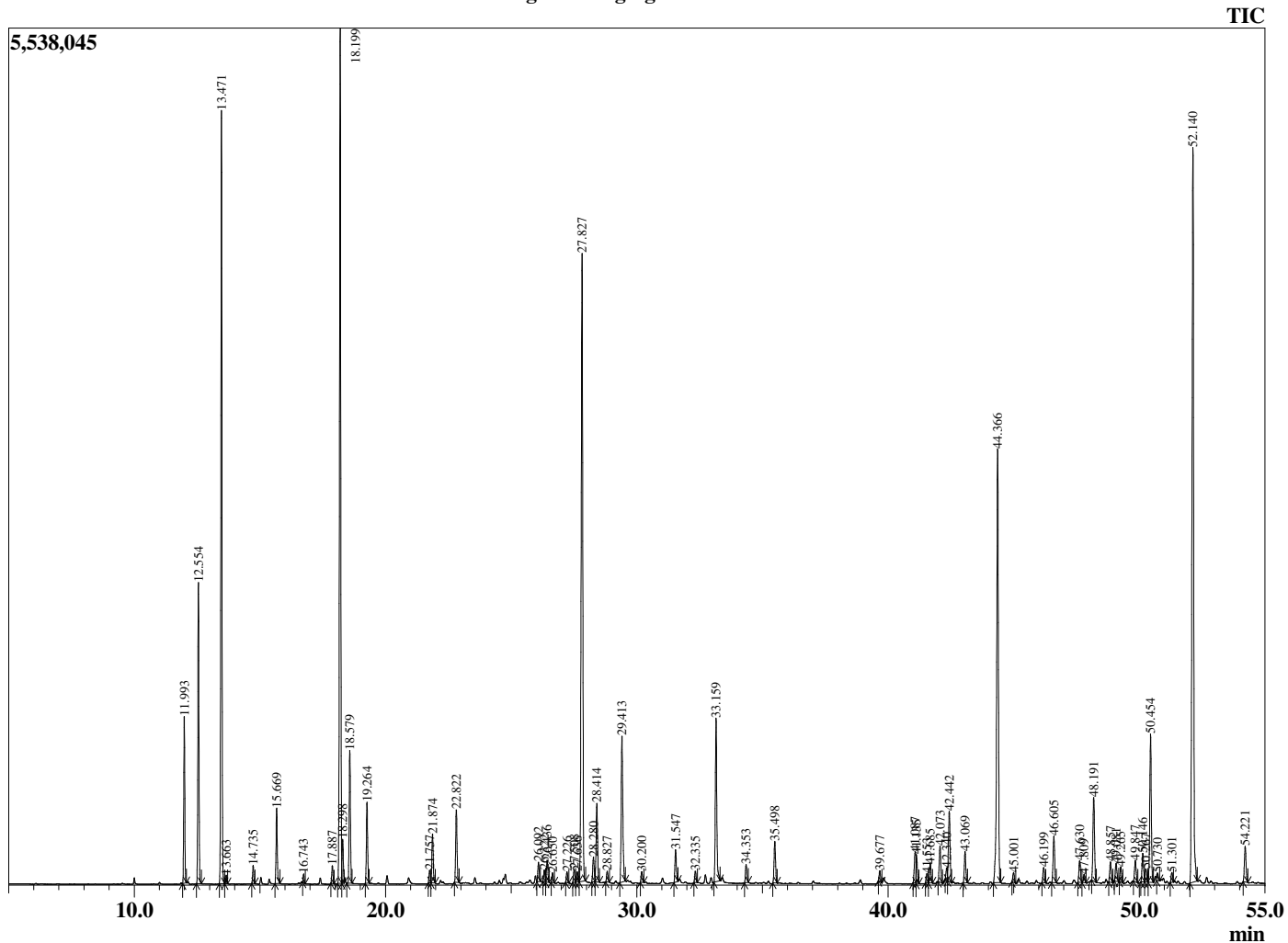
Analyzed by : Dr. Robert S. Pappas
 Analyzed : 7/11/2020 8:54:42 AM
 Sample Type : Essential Oil
 Sample Name : Gingergrass - Edens Garden
 Sample ID : BA18FV
 Injection Volume : 0.10
 Instrument ID : GC-4



Peak Report TIC

R.Time	Name	Area%
11.993	Tricyclene	2.16
12.554	alpha-Pinene	4.05
13.471	Camphene	10.70
13.663	Thuja-2,4(10)diene	0.11
14.735	Sabinene	0.25
15.669	Myrcene	1.14
16.743	alpha-Phellandrene	0.11
17.887	para-Cymene	0.26
18.199	Limonene	13.48
18.298	beta-Phellandrene	0.64
18.579	cis-beta-Ocimene	2.04
19.264	trans-beta-Ocimene	1.22
21.757	Camphenilone	0.19
21.874	Terpinolene	0.83
22.822	Linalool	1.20
26.092	Camphor	0.30
26.322	trans-Verbenol	0.18
26.436	Citronellal	0.37
26.650	trans-beta-Terpineol	0.16
27.226	Isoborneol	0.17
27.508	Unidentified	0.22
27.636	Unidentified	0.17
27.827	Borneol	12.12
28.280	Unidentified	0.44
28.414	Terpinen-4-ol	1.41
28.827	para-Cymen-8-ol	0.19
29.413	alpha-Terpineol	2.81
30.200	Decanal	0.20
31.547	Citronellol	0.57
32.335	Neral	0.19
33.159	Geraniol	2.98
34.353	Geranial	0.32
35.498	Bornyl acetate	0.76
39.677	alpha-Cubebene	0.19
41.087	Isoledene	0.59
41.135	Cyclosativene	0.43
41.553	alpha-Copaene	0.15
41.685	Geranyl acetate	0.34
42.073	beta-Bourbonene	0.67
42.340	beta-Cubebene	0.19
42.442	beta-Elemene	1.35
43.069	Methyleugenol	0.56
44.366	beta-Caryophyllene	9.02
45.001	beta-Copaene	0.18
46.199	trans-Murrola-3,5-diene	0.28
46.605	alpha-Humulene	0.89
47.630	10-beta-H-Cadina-1(6),4-diene	0.41
47.809	trans-Cadina-1(6),4-diene	0.16
48.191	Germacrene D	1.64
48.857	trans-Muurolo-4(14),5-diene	0.39
49.081	Unidentified	0.38
49.265	alpha-Muuroloene	0.28
49.847	beta-Bisabolene	0.41
50.146	gamma-Cadinene	0.55
50.267	Unidentified	0.25
50.454	delta-Cadinene	2.83
50.730	Zonarene	0.12
51.301	trans-Cadine-1,4-diene	0.17
52.140	Elemicin	14.92
54.221	Caryophyllene oxide	0.70
		100.00

Chromatogram Gingergrass - Edens Garden



Comments:

The analysis of this Gingergrass batch sample meets the expected chemical profile for authentic essential oil of *Cymbopogon martinii* var. *softa*. No contamination or adulteration was detected. The results provided in this GCMS quality analysis reflect the chemical composition of the oil and lot referenced above on the date of analysis.