

Sample Information

Analyzed by : Dr. Robert S. Pappas
 Analyzed : 9/27/2018 1:38:56 AM
 Sample Type : Essential Oil
 Sample Name : Ginger - Edens Garden
 Sample ID : AH17IH
 Injection Volume : 0.10
 Instrument ID : GC-3

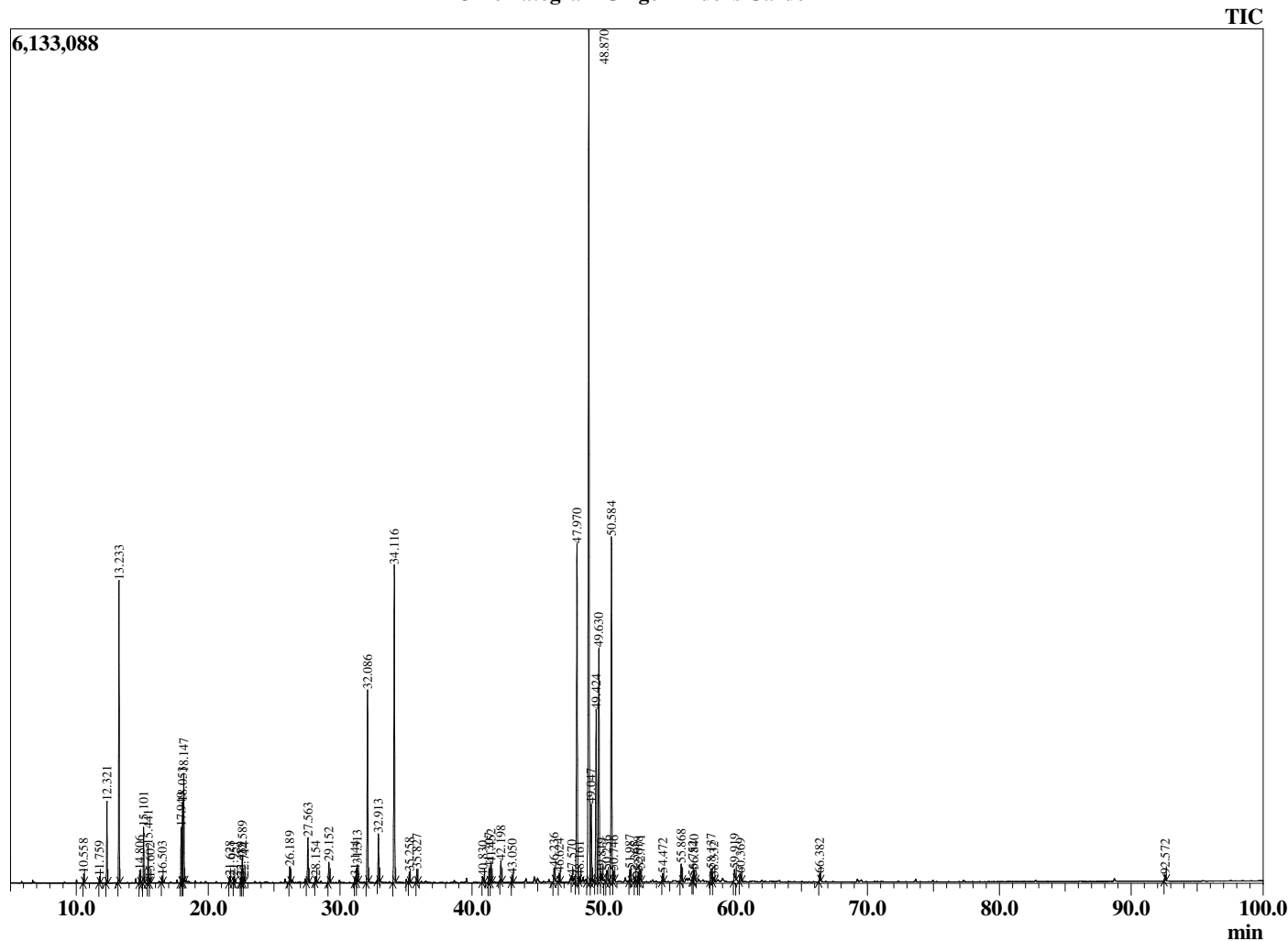


Peak Report TIC

R.Time	Name	Area%
10.558	2-Heptanol	0.15
11.759	Tricyclene	0.11
12.321	alpha-Pinene	1.53
13.233	Camphene	5.78
14.806	beta-Pinene	0.24
15.101	6-Methyl hept-5-en-2-one	1.07
15.441	Myrcene	0.77
15.602	Sulcatol	0.10
16.503	alpha-Phellandrene	0.13
17.949	Limonene	1.16
18.053	beta-Phellandrene	1.84
18.147	1,8-Cineole	2.32
21.628	Terpinolene	0.13
21.951	2-Nonanone	0.13
22.489	Unidentified	0.12
22.589	Linalool	0.60
22.714	Nonan-2-ol	0.12
26.189	Citronellal	0.38
27.563	Borneol	1.12
28.154	Terpinen-4-ol	0.16
29.152	alpha-Terpineol	0.52
31.144	Nerol	0.13
31.313	Citronellol	0.41
32.086	Neral	4.78
32.913	Geraniol	1.14
34.116	Geranial	8.29
35.258	Bornyl acetate	0.25
35.827	2-Undecanone	0.33
40.830	Isoledene	0.20
41.307	alpha-Copaene	0.37
41.452	Geranyl acetate	0.49
42.198	beta-Elemene	0.54
43.050	Sesquithujene isomer	0.20
46.236	trans-beta-Farnesene	0.39
46.624	Alloaromadendrene	0.23
47.570	trans-Cadina-1(6),4-diene	0.09
47.970	Ar-Curcumene	9.61
48.161	Unidentified	0.15
48.870	alpha-Zingiberene	26.05
49.047	trans-Muurolo-4(14),5-diene	2.24
49.424	(E,E)-alpha-Farnesene	4.71
49.630	beta-Bisabolene	6.57
49.819	gamma-Cadinene	0.17
50.236	delta-Cadinene	0.44
50.584	beta-Sesquiphellandrene	9.72
50.746	trans-gamma-Bisabolene	0.28
51.987	Elemol	0.34
52.365	Unidentified	0.11
52.618	Germacrene B	0.25
52.771	trans-Nerolidol	0.32
54.472	Unidentified	0.21
55.868	Zingiberenol	0.47
56.752	Unidentified	0.11
56.840	Unidentified	0.34
58.137	alpha-Eudesmol	0.45
58.332	Unidentified	0.13
59.919	11-alpha-H-Himachal-4-en-1-beta-ol	0.38
60.369	Unidentified	0.24
66.382	Unidentified	0.21
92.572	Gingerol	0.16
		100.00

This report is not valid after 1 year of the report date.

Chromatogram Ginger - Edens Garden



Comments:

The analysis of this Ginger batch sample meets the expected chemical profile for authentic essential oil of *Zingiber officinale*. No contamination or adulteration was detected.