

Sample Information

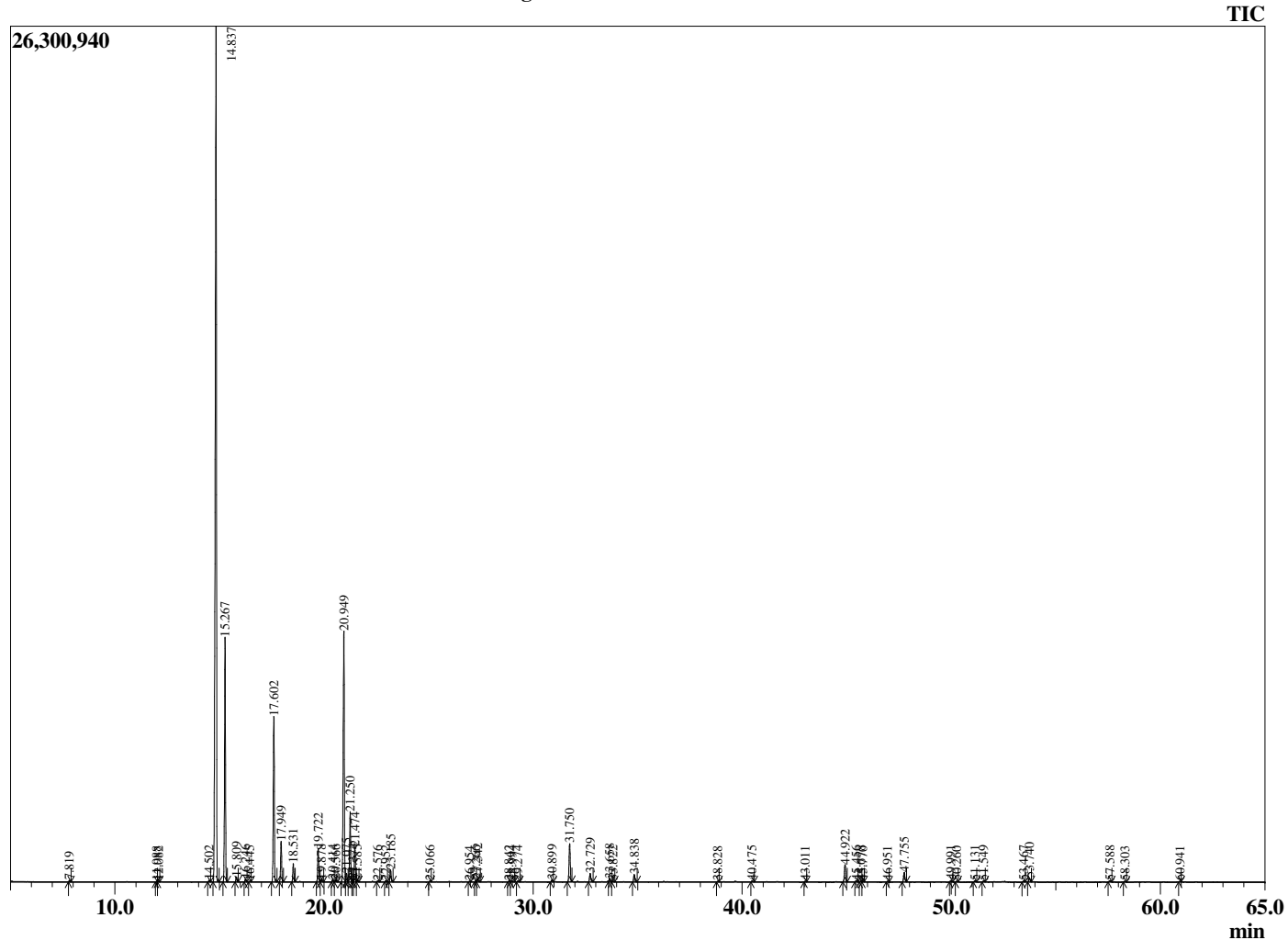
Analyzed by : Dr. Robert S. Pappas  
 Analyzed : 4/7/2018 5:29:08 AM  
 Sample Type : Essential Oil  
 Sample Name : Frankincense - Edens Garden  
 Sample ID : AH30CE  
 Injection Volume : 0.10  
 Instrument ID : GC-2



Peak Report TIC

R.Time	Name	Area%
7.819	Toluene	0.05
11.988	Unidentified	0.03
12.082	2-Methylbutyl acetate	0.03
14.502	Hashishene	0.06
14.837	alpha-Thujene	49.87
15.267	alpha-Pinene	10.74
15.809	Thujadiene isomer	0.22
16.246	Camphene	0.12
16.445	Thuja-2,4(10)diene	0.04
17.602	Sabinene	7.81
17.949	beta-Pinene	1.89
18.531	Myrcene	0.85
19.722	alpha-Phellandrene	1.63
19.878	delta-3-Carene	0.12
20.414	alpha-Terpinene	0.11
20.566	ortho-Cymene	0.10
20.949	para-Cymene	13.28
21.075	Thujol isomer	0.43
21.250	Limonene	3.46
21.374	beta-Phellandrene	0.14
21.474	1,8-Cineole	1.69
21.585	cis-beta-Ocimene	0.08
22.576	Thujol isomer	0.07
22.952	Unidentified	0.06
23.185	gamma-Terpinene	0.61
25.066	Terpinolene	0.04
26.954	Unidentified	0.03
27.266	Unidentified	0.07
27.342	alpha-Thujone	0.19
28.842	trans-Sabinol	0.05
28.994	trans-Pinocarveol	0.07
29.274	trans-Verbenol	0.05
30.899	Unidentified	0.11
31.750	Terpinen-4-ol	2.09
32.729	alpha-Terpineol	0.52
33.658	Octyl acetate	0.19
33.822	Thujol isomer	0.04
34.838	Decyl methyl ether	0.42
38.828	Bornyl acetate	0.03
40.475	Unidentified	0.05
43.011	alpha-Cubebene	0.03
44.922	alpha-Copaene	1.04
45.456	beta-Bourbonene	0.06
45.678	beta-Cubebene	0.06
45.770	beta-Elemene	0.04
46.951	Unidentified	0.03
47.755	beta-Caryophyllene	0.55
49.991	alpha-Humulene	0.10
50.260	Alloaromadendrene	0.04
51.131	trans-Cadina-1(6),4-diene	0.06
51.549	Germacrene D	0.07
53.467	gamma-Cadinene	0.07
53.740	delta-Cadinene	0.24
57.588	Caryophyllene oxide	0.08
58.303	Viridiflorol	0.04
60.941	alpha-Muurolol (=Torreyol)	0.03
		100.00

Chromatogram Frankincense - Edens Garden



Comments:

The analysis of this Frankincense batch sample meets the expected chemical profile for authentic essential oil of *Boswellia frereana*. No contamination or adulteration was detected.