

Sample Information

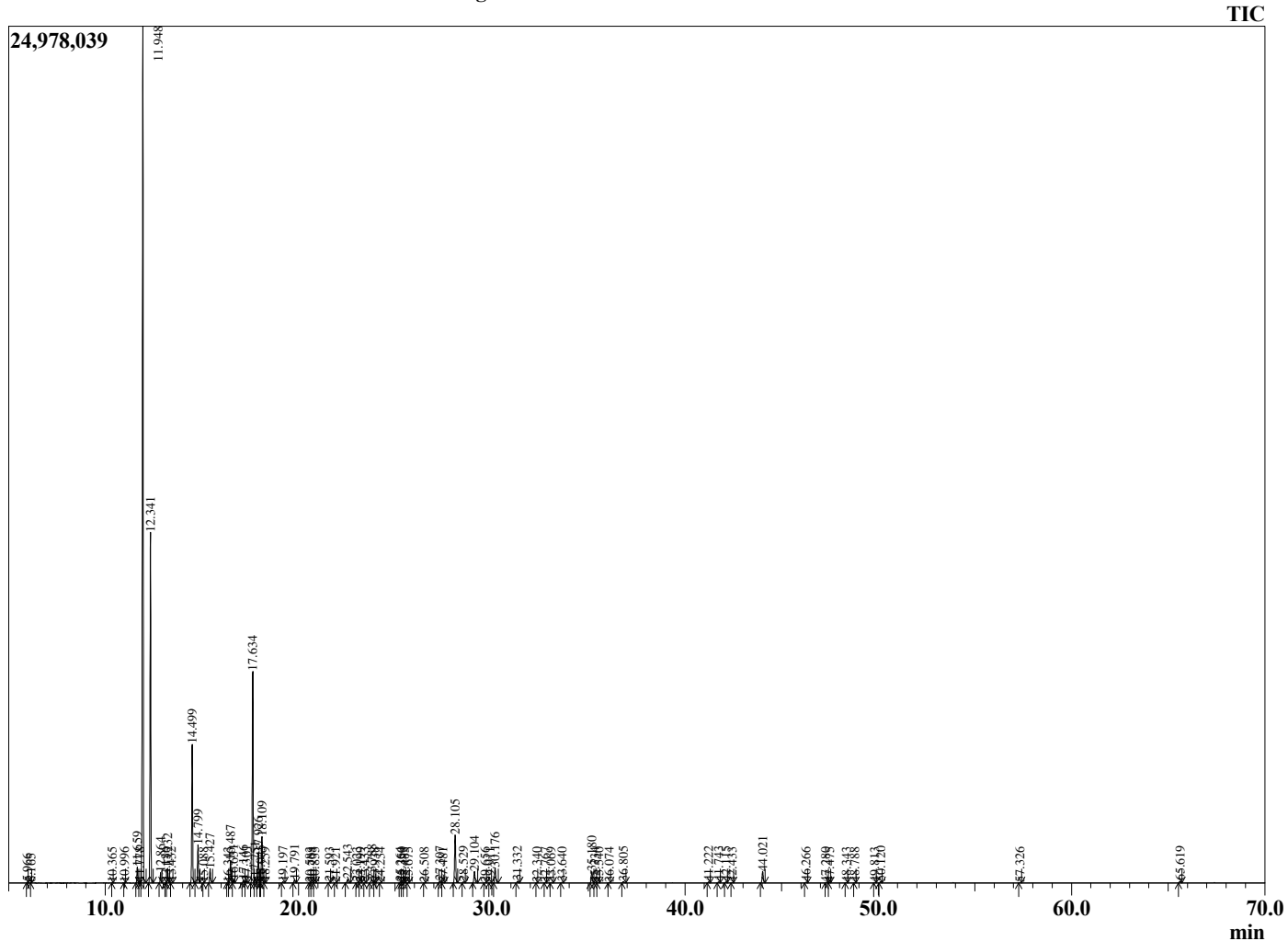
Analyzed by : Dr. Robert S. Pappas
 Analyzed : 3/7/2021 12:40:05 AM
 Sample Type : Essential Oil
 Sample Name : Frankincense Frereana - Edens Garden
 Sample ID : BB22AL
 Injection Volume : 0.10
 Instrument ID : GC-4



Peak Report TIC

R.Time	Name	Area%
5.966	Toluene	0.02
6.165	Unidentified	0.00
10.365	Unidentified	0.00
10.996	Unidentified	0.01
11.659	Hashishene	0.74
11.778	Tricyclene	0.03
11.948	alpha-Thujene	44.01
12.341	alpha-Pinene	16.80
12.864	Thujadiene isomer	0.48
13.136	alpha-Fenchene	0.02
13.232	Camphene	0.71
13.432	Thuja-2,4(10)diene	0.03
14.499	Sabinene	7.12
14.799	beta-Pinene	1.97
15.088	Unidentified	0.01
15.427	Myrcene	0.77
16.343	Pseudolimonene	0.02
16.487	alpha-Phellandrene	1.21
16.631	delta-3-Carene	0.14
17.146	alpha-Terpinene	0.14
17.301	meta-Cymene	0.12
17.634	para-Cymene	12.00
17.751	Unidentified	0.34
17.926	Limonene	1.76
18.045	beta-Phellandrene	0.08
18.109	1,8-Cineole	2.62
18.259	ortho-Cymene	0.03
19.197	Unidentified	0.07
19.791	gamma-Terpinene	0.18
20.583	trans-Sabinene hydrate	0.01
20.708	Unidentified	0.02
20.833	Unidentified	0.03
21.593	Terpinolene	0.03
21.921	para-Cymenene	0.02
22.543	Linalool	0.25
23.023	alpha-Thujone	0.03
23.199	Unidentified	0.02
23.433	Unidentified	0.04
23.788	beta-Thujone	0.27
23.938	Myrcenol	0.03
24.234	Unidentified	0.02
25.264	trans-Sabinol	0.03
25.350	trans-Pinocarveol	0.03
25.485	Unidentified	0.02
25.675	trans-Verbenol	0.03
26.508	Unidentified	0.01
27.307	Unidentified	0.12
27.481	para-Mentha-1,5-dien-8-ol	0.03
28.105	Terpinen-4-ol	3.12
28.529	para-Cymen-8-ol	0.06
29.104	alpha-Terpineol	0.76
29.656	alpha-Phellandrene epoxide	0.02
29.911	Verbenone	0.02
30.176	Octyl acetate	1.00
31.332	1-Methoxy Decane	0.10
32.340	Cuminaldehyde	0.01
32.767	Unidentified	0.02
33.069	Unidentified	0.02
33.640	Unidentified	0.04
35.180	Bornyl acetate	0.78
35.334	Isobornyl acetate	0.03
35.540	Thymol	0.01

Chromatogram Frankincense Frereana - Edens Garden



Comments:

The analysis of this Frankincense - Frereana batch sample meets the expected chemical profile for authentic essential oil of *Boswellia frereana*. No contamination or adulteration was detected. The results provided in this GCMS quality analysis reflect the chemical composition of the oil and lot referenced above on the date of analysis.

R.Time	Name	Area%
36.074	Carvacrol	0.02
36.805	Unidentified	0.10
41.222	alpha-Copaene	0.07
41.743	beta-Bourbonene	0.07
42.115	beta-Elemene	0.05
42.433	Unidentified	0.02
44.021	trans-beta-Caryophyllene	0.83
46.266	alpha-Humulene	0.05
47.280	Unidentified	0.01
47.475	trans-Cadina-1(6),4-diene	0.01
48.343	beta-Selinene	0.02
48.788	alpha-Selinene	0.02
49.813	gamma-Cadinene	0.03
50.120	delta-Cadinene	0.08
57.326	tau-Cadinol	0.03
65.619	Unidentified	0.11
		100.00