

Sample Information

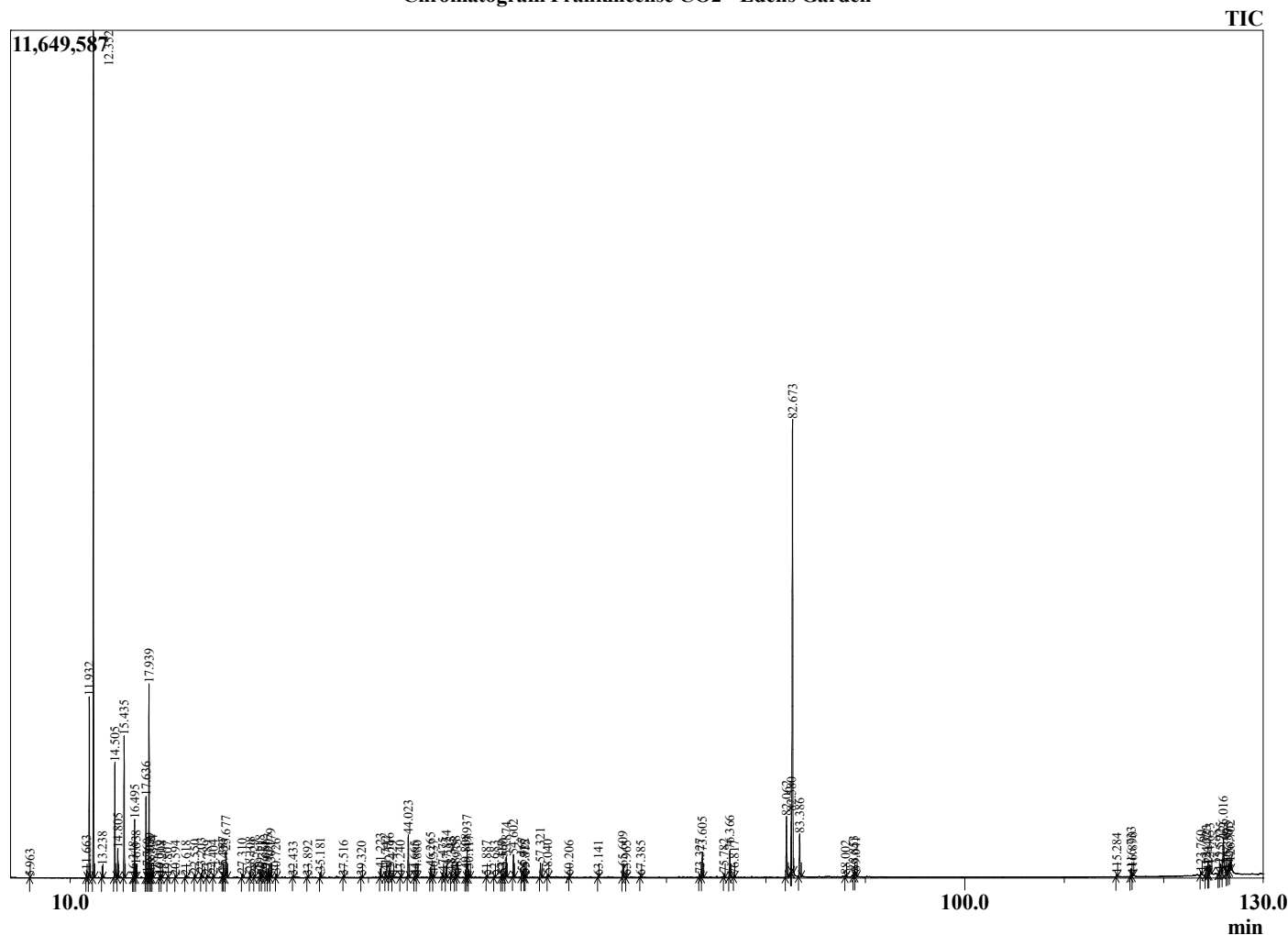
Analyzed by : Dr. Robert S. Pappas
 Analyzed : 7/20/2022 12:24:32 AM
 Sample Type : Essential Oil
 Sample Name : Frankincense CO2 - Edens Garden
 Sample ID : EG Lot #BB15GX
 Injection Volume : 0.10
 Instrument ID : GC-4



Peak Report TIC

R.Time	Name	Area%
5.963	Toluene	0.01
11.663	Hashishene	0.21
11.932	alpha-Thujene	4.79
12.352	alpha-Pinene	23.47
13.238	Camphene	0.31
14.505	Sabinene	3.37
14.805	beta-Pinene	0.85
15.435	Myrcene	4.13
16.348	Pseudolimonene	0.04
16.495	alpha-Phellandrene	1.76
16.638	delta-3-Carene	0.39
17.636	para-Cymene	2.50
17.760	Unidentified	0.13
17.939	Limonene	6.01
18.039	beta-Phellandrene	0.29
18.118	1,8-Cineole	0.18
18.334	(Z)-beta-Ocimene	0.26
19.019	(E)-beta-Ocimene	0.07
19.208	Unidentified	0.06
19.807	gamma-Terpinene	0.05
20.594	1-Octanol	0.07
21.618	Unidentified	0.07
22.550	Linalool	0.11
23.203	Unidentified	0.16
23.789	Unidentified + beta-Thujone	0.12
24.404	alpha-Campholenal	0.10
25.357	trans-Pinocarveol	0.21
25.430	Unidentified	0.10
25.677	trans-Verbenol	0.94
27.310	Unidentified	0.13
28.108	Terpinen-4-ol	0.20
28.529	para-Cymen-8-ol	0.08
29.118	alpha-Terpineol	0.32
29.321	Estrgole	0.09
29.651	alpha-Phellandrene epoxide	0.06
29.903	Verbenone	0.33
30.179	Octyl acetate	0.52
30.726	trans-Carveol	0.12
32.433	Carvone	0.04
33.892	Unidentified	0.06
35.181	Bornyl acetate	0.20
37.516	Unidentified	0.05
39.320	Unidentified	0.07
41.223	alpha-Copaene	0.35
41.742	beta-Bourbonene	0.23
42.116	beta-Elemene	0.35
42.429	Unidentified	0.07
43.240	alpha-Gurjenene	0.06
44.023	trans-beta-Caryophyllene	1.72
44.665	beta-Copaene	0.05
44.880	trans-alpha-Bergamotene	0.07
46.265	alpha-Humulene	0.40
46.537	Alloaromadendrene	0.11
47.475	trans-Cadina-1(6),4-diene	0.17
47.854	Germacrene D	0.48
48.345	beta-Selinene	0.20
48.758	alpha-Selinene	0.31
48.935	alpha-Murolene	0.09
49.808	gamma-Cadinene	0.30
49.937	Cubebol	1.13
50.117	delta-Cadinene	0.35
51.887	alpha-Elemol	0.04

Chromatogram Frankincense CO2 - Edens Garden



Comments:

The analysis of this Frankincense CO2 batch sample meets the expected chemical profile for authentic essential oil of *Boswellia carterii*.

No contamination or adulteration was detected. The results provided in this GCMS quality analysis reflect the chemical composition of the oil and lot referenced above on the date of analysis.

©Copyright 2022 by Essential Oil University. All rights reserved. Any publishing, copying, use, dissemination, or distribution of this report, including online, without the express written permission of Essential Oil University is strictly prohibited.

R.Time	Name	Area%
52.683	Unidentified	0.07
53.419	Unidentified	0.09
53.560	Spathulenol	0.14
53.874	Caryophyllene oxide	0.88
54.602	Viridiflorol	0.94
55.467	Ledol	0.29
55.722	Unidentified	0.12
55.815	Unidentified	0.07
57.321	tau-Cadinol	0.60
58.040	alpha-Eudesmol	0.15
60.206	Unidentified	0.05
63.141	alpha-Bisabolol oxide A	0.06
65.609	Phellandrene dimer	0.45
65.965	Unidentified	0.07
67.385	Unidentified	0.06
73.327	Myrcene dimer I	0.14
73.605	Neocembrene A	1.10
75.782	Unidentified	0.16
76.366	Verticilla-4(20),7,11-triene	1.11
76.817	Unidentified	0.08
82.062	Cembrenol	2.63
82.580	Incensole	2.02
82.673	Serratol	20.38
83.386	Incensyl acetate	1.91
88.002	Unidentified	0.07
88.853	Unidentified	0.25
89.041	Unidentified	0.23
115.284	Unidentified	0.09
116.733	Unidentified	0.40
116.890	Unidentified	0.09
123.760	Lanosterol	0.16
124.323	Unidentified	0.62
124.477	Unidentified	0.29
124.653	beta-Amyrin	0.60
125.592	Unidentified	0.13
125.725	Unidentified	0.74
126.016	alpha-Amyrin	2.39
126.389	Unidentified	0.08
126.565	Unidentified	0.34
126.702	Unidentified	0.50
		100.00