

Sample Information

Analyzed by : Dr. Robert S. Pappas  
 Analyzed : 9/26/2018 11:41:35 PM  
 Sample Type : Essential Oil  
 Sample Name : Frankincense - serrata - Edens Garden  
 Sample ID : AH17IB  
 Injection Volume : 0.10  
 Instrument ID : GC-3

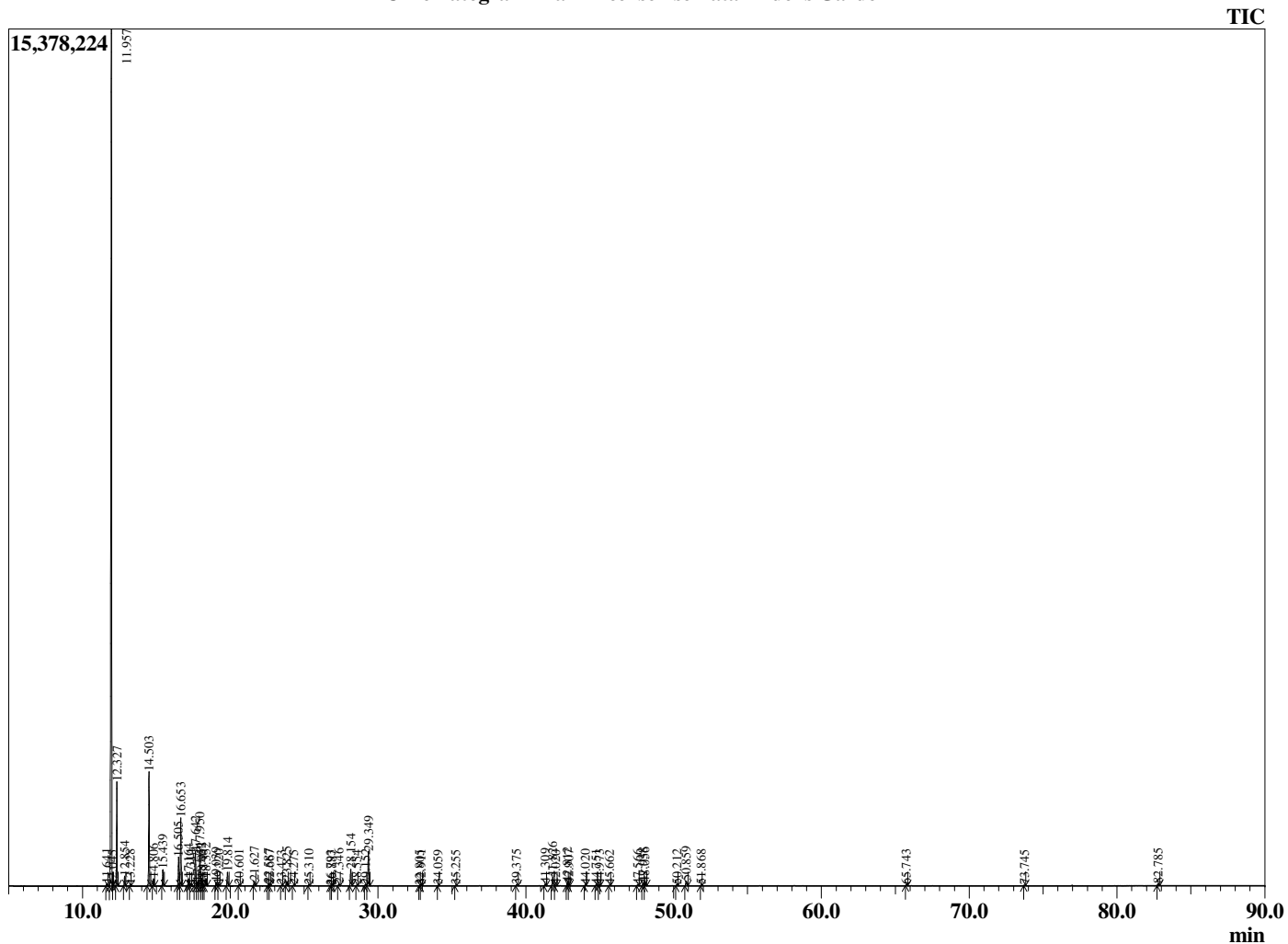


Peak Report TIC

R.Time	Name	Area%
11.641	Hashishene	0.11
11.957	alpha-Thujene	62.88
12.045	Unidentified	0.02
12.327	alpha-Pinene	5.71
12.854	Thujadiene isomer	0.56
13.228	Camphene	0.08
14.503	Sabinene	6.87
14.806	beta-Pinene	0.43
15.439	Myrcene	0.98
16.505	alpha-Phellandrene	1.83
16.653	delta-3-Carene	4.26
17.164	alpha-Terpinene	0.46
17.314	ortho-Cymene	0.09
17.642	para-Cymene	2.24
17.776	Thujol isomer	0.28
17.950	Limonene	2.48
18.052	beta-Phellandrene	0.49
18.146	1,8-Cineole	0.04
18.352	cis-beta-Ocimene	0.48
19.039	trans-beta-Ocimene	0.24
19.220	Thujol isomer	0.09
19.814	gamma-Terpinene	0.94
20.601	trans-Sabinene hydrate	0.10
21.627	Terpinolene	0.32
22.587	Linalool	0.13
22.667	cis-Sabinene hydrate	0.07
23.473	Unidentified	0.05
23.825	beta-Thujone	0.37
24.275	cis-para-Menth-2-en-1-ol	0.05
25.310	trans-Sabinol	0.06
26.793	Unidentified	0.03
26.887	alpha-Phellandren-8-ol	0.04
27.346	Unidentified	0.13
28.154	Terpinen-4-ol	1.23
28.554	para-Cymen-8-ol	0.04
29.152	alpha-Terpineol	0.10
29.349	Estragole	2.59
32.805	Unidentified	0.03
32.911	Geraniol	0.10
34.059	Unidentified	0.03
35.255	Bornyl acetate	0.04
39.375	Unidentified	0.09
41.309	alpha-Copaene	0.14
41.826	beta-Bourbonene	0.70
42.020	alpha-Bourbonene	0.06
42.812	Methyleugenol	0.26
42.907	Unidentified	0.11
44.020	beta-Ylangene	0.05
44.751	beta-Copaene	0.08
44.973	trans-alpha-Bergamotene	0.07
45.662	Unidentified	0.05
47.566	trans-Cadina-1(6),4-diene	0.07
47.938	Germacrene D	0.25
48.056	gamma-Himachalene	0.28
50.212	delta-Cadinene	0.06
50.859	Unidentified	0.39
51.868	Elemicin	0.05
65.743	Phellandrene dimer	0.06
73.745	Neocembrene A	0.04
82.785	Serratol	0.17
		100.00

This report is not valid after 1 year of the report date.

Chromatogram Frankincense - serrata - Edens Garden



Comments:

The analysis of this Frankincense - serrata batch sample meets the expected chemical profile for authentic essential oil of *Boswellia serrata*. No contamination or adulteration was detected.