

Sample Information

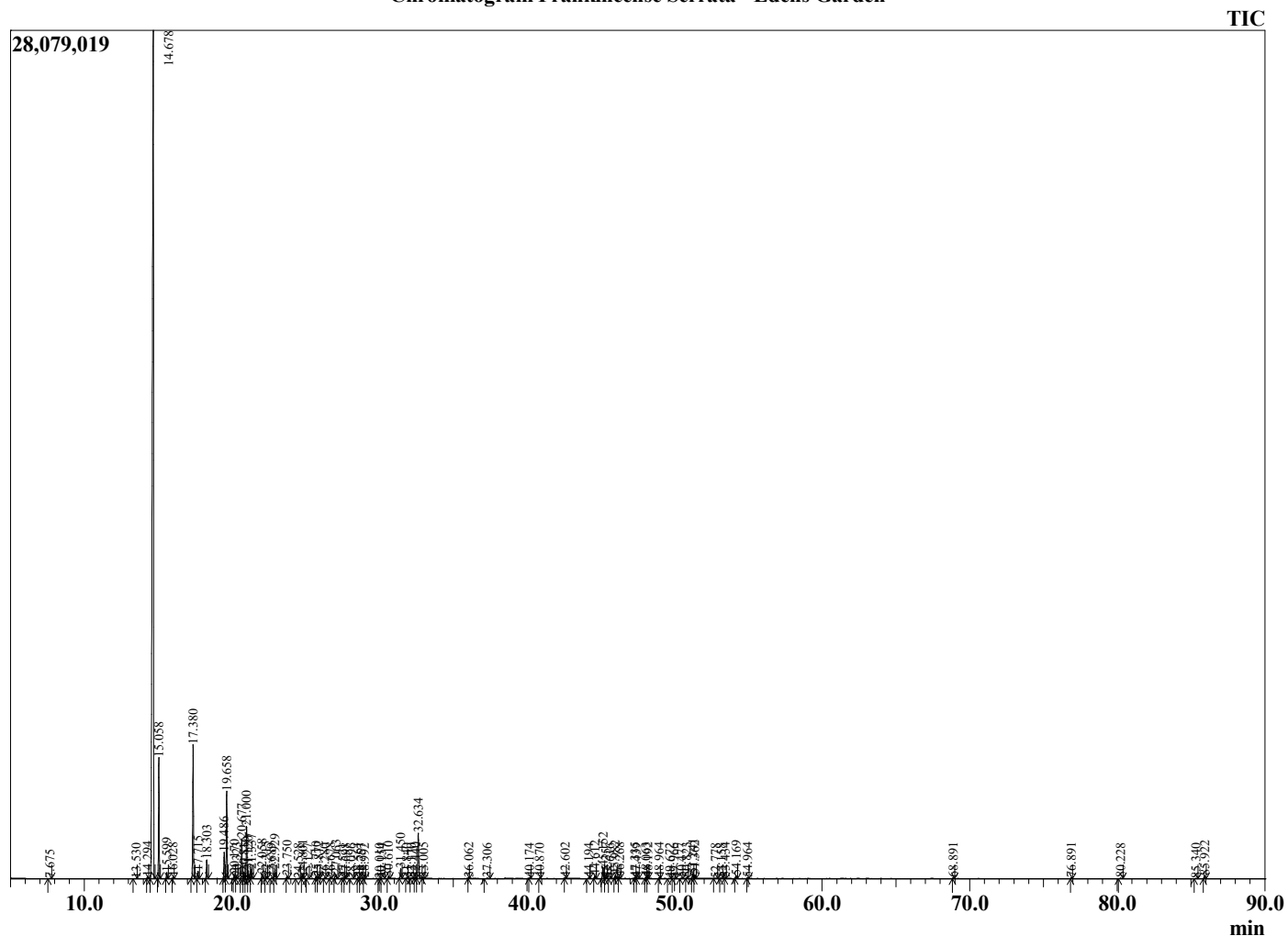
Analyzed by : Dr. Robert S. Pappas
 Analyzed : 7/27/2022 8:24:52 PM
 Sample Type : Essential Oil
 Sample Name : Frankincense Serrata - Edens Garden
 Sample ID : EG Lot # BB18JO
 Injection Volume : 0.10
 Instrument ID : GC-2



Peak Report TIC

R.Time	Name	Area%
7.675	Toluene	0.01
13.530	Unidentified	0.01
14.294	Hashishene	0.09
14.678	alpha-Thujene	67.94
15.058	alpha-Pinene	5.03
15.599	Thuja-2,4(10)diene	0.26
16.028	Camphene	0.06
17.380	Sabinene	6.18
17.715	beta-Pinene	0.32
18.303	Myrcene	0.85
19.486	alpha-Phellandrene	1.28
19.658	3-Carene	4.10
20.170	alpha-Terpinene	0.19
20.323	ortho-Cymene	0.07
20.677	para-Cymene	1.93
20.816	Thujol isomer	0.32
21.000	Limonene	2.52
21.120	beta-Phellandrene	0.39
21.337	(Z)-beta-Ocimene	0.46
22.058	(E)-beta-Ocimene	0.21
22.315	Thujol	0.10
22.689	Unidentified	0.02
22.929	gamma-Terpinene	0.46
23.750	trans-Sabinene hydrate	0.12
24.528	Isoterpinolene	0.02
24.801	Terpinolene	0.20
25.127	para-Cymenene	0.02
25.710	Linalool	0.09
25.872	cis-Sabinene hydrate	0.10
26.280	alpha-Thujone	0.03
26.678	Unidentified	0.06
27.063	beta-Thujone	0.29
27.521	cis-p-Menth-2-en-1-ol	0.01
27.698	allo-Ocimene	0.02
28.096	Unidentified	0.02
28.561	cis-Sabinol	0.06
28.757	trans-p-Menth-2-en-1-ol	0.03
28.992	trans-Verbenol	0.03
30.010	Unidentified	0.02
30.154	p-Mentha-1,5-dien-8-ol	0.02
30.610	trans-Sabinol	0.12
31.450	Terpinen-4-ol	0.52
31.840	para-Cymen-8-ol	0.03
32.170	Unidentified	0.02
32.440	alpha-Terpineol	0.06
32.634	Estragole	2.55
33.005	Unidentified	0.04
36.062	Linalyl acetate	0.04
37.306	Unidentified	0.03
40.174	Unidentified	0.03
40.870	Unidentified	0.03
42.602	alpha-Terpinyl acetate	0.03
44.194	alpha-Ylangene	0.03
44.612	alpha-Copaene	0.15
45.152	beta-Bourbonene	0.65
45.357	alpha-Bourbonene	0.05
45.616	Unidentified	0.02
45.982	Methyleugenol	0.18
46.268	Longifolene	0.08
47.335	beta-Ylangene	0.06
47.439	trans-beta-Caryophyllene	0.03
48.063	beta-Copaene	0.07

Chromatogram Frankincense Serrata - Edens Garden



Comments:

The analysis of this Frankincense serrata batch sample meets the expected chemical profile for authentic essential oil of Boswellia serrata.

No contamination or adulteration was detected. The results provided in this GCMS quality analysis reflect the chemical composition of the oil and lot referenced above on the date of analysis.

R.Time	Name	Area%
48.192	trans-alpha-Bergamotene	0.06
48.964	Unidentified	0.04
49.672	alpha-Humulene	0.01
49.966	Alloaromadendrene	0.02
50.477	cis-Muurola-4(14),5-diene	0.03
50.823	trans-Cadina-1(6),4-diene	0.04
51.241	Germacrene D	0.24
51.362	gamma-Himachalene	0.19
52.778	beta-Bisabolene	0.02
53.158	gamma-Cadinene	0.02
53.434	delta-Cadinene	0.03
54.169	Unidentified	0.16
54.964	Elemicin	0.04
68.891	alpha-Phellandrene dimer	0.05
76.891	Neocembrene A	0.04
80.228	Verticellol	0.03
85.340	Unidentified	0.02
85.922	Serratol	0.19
		100.00