

Sample Information

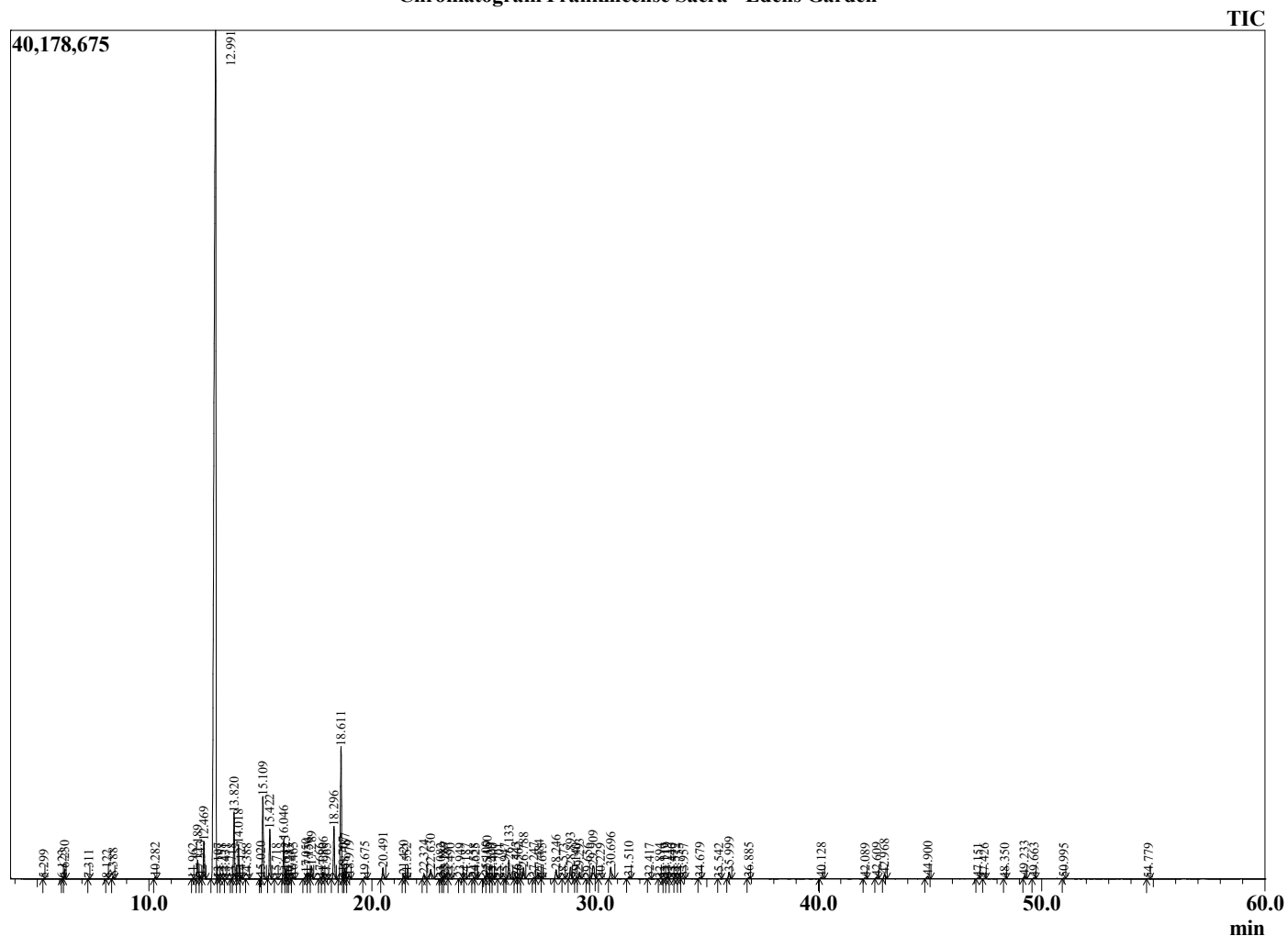
Analyzed by : Dr. Robert S. Pappas
 Analyzed : 7/27/2022 6:41:26 AM
 Sample Type : Essential Oil
 Sample Name : Frankincense sacra - Edens Garden
 Sample ID : EG Lot # BB18JN
 Injection Volume : 0.10
 Instrument ID : GC-3



Peak Report TIC

R.Time	Name	Area%
5.299	Unidentified	0.01
6.123	2,3-dihydro-Toluene	0.01
6.230	Toluene	0.27
7.311	6,6-Dimethylhepta-2,4-diene	0.02
8.122	Unidentified	0.02
8.388	1,2,4,4-Tetramethylcyclopentene	0.08
10.282	Unidentified	0.07
11.962	Unidentified	0.02
12.189	Hashishene	0.72
12.313	Tricyclene	0.12
12.469	alpha-Thujene	1.61
12.991	alpha-Pinene	64.73
13.107	Unidentified	0.01
13.258	Unidentified	0.02
13.431	Thujadiene isomer	0.01
13.718	alpha-Fenchene	0.02
13.820	Camphene	2.72
14.018	Thuja-2,4(10)-diene	1.38
14.127	Unidentified	0.08
14.388	Unidentified	0.02
15.020	Cymene analogue	0.07
15.109	Sabinene	3.45
15.422	beta-Pinene	2.10
15.718	6-Methyl hept-5-en-2-one	0.04
16.046	Myrcene	1.65
16.125	Menthatriene analogue	0.30
16.217	6-Methyl hept-5-en-2-ol	0.02
16.285	Unidentified	0.01
16.465	Unidentified	0.07
17.050	para-Mentha-1(7),8-diene + Menthatriene an	0.30
17.156	alpha-Phellandrene + 2-methyl anisole	0.38
17.289	delta-3-Carene	0.56
17.666	1,4-Cineole	0.03
17.806	alpha-Terpinene	0.30
17.965	ortho-Cymene	0.02
18.296	para-Cymene	2.40
18.611	Limonene	6.15
18.707	beta-Phellandrene	0.27
18.787	1,8-Cineole	0.44
18.979	cis-beta-Ocimene	0.20
19.675	trans-beta-Ocimene	0.10
20.491	gamma-Terpinene	0.52
21.420	Pinol	0.16
21.552	Unidentified	0.02
22.324	Terpinolene	0.21
22.630	para-Cymenene	0.54
23.082	Unidentified	0.01
23.189	Perillene	0.04
23.267	Linalool	0.14
23.490	Phellandral	0.02
23.949	Unidentified	0.04
24.187	1,3,8-para-Menthatriene	0.02
24.558	beta-Thujone	0.05
24.625	alpha-Fenchol	0.04
25.100	6-Methyl-5-hepten-2-yl tiglate	0.10
25.150	alpha-Campholenal	0.42
25.329	Phellandral analogue	0.03
25.400	Unidentified	0.01
25.701	2-Vinyl anisole	0.01
25.947	Nopinone	0.01
26.133	trans-Pinocarveol	0.98
26.443	trans-Verbenol	0.09

Chromatogram Frankincense Sacra - Edens Garden



Comments:

The analysis of this Frankincense sacra batch sample meets the expected chemical profile for authentic essential oil of Boswellia sacra.

No contamination or adulteration was detected. The results provided in this GCMS quality analysis reflect the chemical composition of the oil and lot referenced above on the date of analysis.

©Copyright 2022 by Essential Oil University. All rights reserved. Any publishing, copying, use, dissemination, or distribution of this report, including online, without the express written permission of Essential Oil University is strictly prohibited.

R.Time	Name	Area%
26.562	Camphor	0.05
26.788	alpha-Phellandrene-8-ol	0.56
27.247	Sabina ketone	0.04
27.484	trans-Pinocamphone	0.23
27.615	Pinocarvone	0.01
28.246	para-Mentha-1,5-dien-8-ol	0.49
28.573	cis-Pinocamphone	0.02
28.893	Terpinen-4-ol	0.60
29.140	4'-methyl-Acetophenone	0.02
29.293	para-Cymen-8-ol	0.27
29.656	Myrtenol analogue	0.01
29.909	Myrtenol	1.03
30.229	gamma-Terpineol	0.02
30.696	Verbenone	0.61
31.510	trans-Carveol	0.09
32.417	cis-Carveol	0.03
32.894	Myrtenyl acetate analogue	0.02
33.119	Cuminal	0.02
33.219	Carvone	0.07
33.440	Unidentified	0.03
33.572	Carvotanacetone	0.04
33.753	Myrtenyl acetate analogue	0.02
33.957	Unidentified	0.04
34.679	3,5-Dimethoxytoluene	0.06
35.542	Phellandral	0.01
35.999	Bornyl acetate	0.35
36.885	Carvacrol	0.05
40.128	alpha-Terpinyl acetate	0.09
42.089	alpha-Copaene	0.04
42.609	beta-Bourbonene	0.09
42.968	beta-Elemene	0.24
44.900	beta-Caryophyllene	0.15
47.151	alpha-Humulene	0.04
47.426	Alloaromadendrene	0.02
48.350	gamma-Murolene	0.02
49.233	beta-Selinene	0.15
49.663	alpha-Selinene	0.06
50.995	delta-Cadinene	0.03
54.779	Caryophyllene oxide	0.02
		100.00