

Sample Information

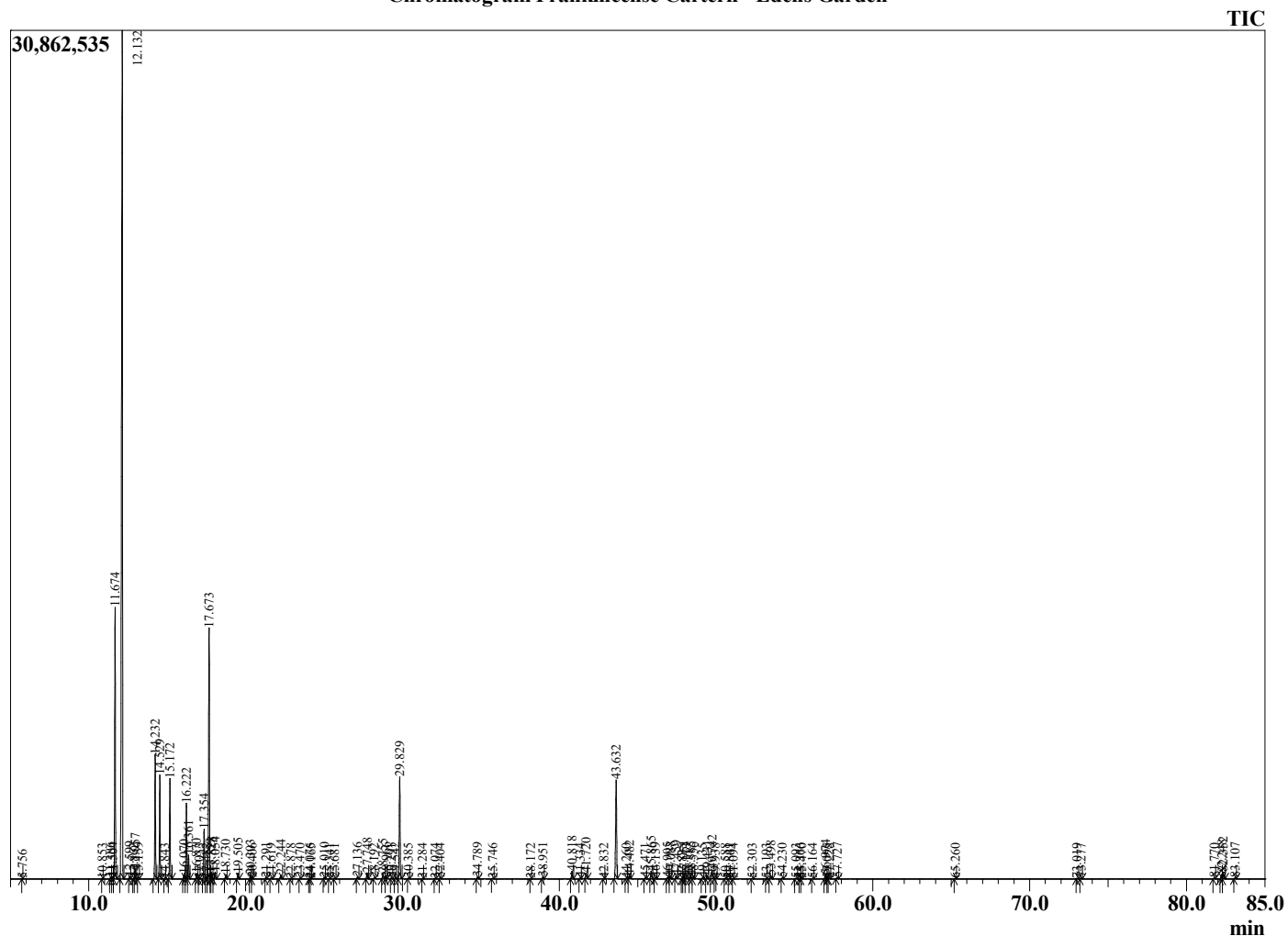
Analyzed by : Dr. Robert S. Pappas  
 Analyzed : 7/27/2022 1:24:54 AM  
 Sample Type : Essential Oil  
 Sample Name : Frankincense Carterii - Edens Garden  
 Sample ID : EG Lot # BB17JM  
 Injection Volume : 0.10  
 Instrument ID : GC-2



Peak Report TIC

R.Time	Name	Area%
5.756	Toluene	0.02
10.853	Unidentified	0.01
11.386	Hashishene	0.05
11.504	Tricyclene	0.06
11.674	alpha-Thujene	9.72
12.132	alpha-Pinene	43.73
12.599	Thujadiene isomer	0.08
12.862	alpha-Fenchene	0.03
12.957	Camphene	0.37
13.159	Thuja-2,4(10)-diene	0.06
14.232	Sabinene	4.60
14.529	beta-Pinene	3.81
14.843	Camphene isomer	0.02
15.172	Myrcene	3.77
16.070	Pseudolimonene	0.18
16.222	alpha-Phellandrene	2.94
16.361	delta-3-Carene	0.90
16.870	alpha-Terpinene	0.19
17.033	ortho-Cymene	0.01
17.354	para-Cymene	1.98
17.482	Unidentified	0.03
17.673	Limonene	10.59
17.759	beta-Phellandrene	0.16
17.828	1,8-Cineole	0.26
18.054	cis-beta-Ocimene	0.27
18.730	trans-beta-Ocimene	0.17
19.505	gamma-Terpinene	0.24
20.303	Octanol	0.15
20.406	Pinol	0.04
21.291	Terpinolene	0.04
21.619	para-Cymenene	0.04
22.244	Linalool	0.19
22.878	Unidentified	0.02
23.470	alpha-Thujone	0.03
24.076	alpha-Campholenal	0.02
24.165	Unidentified	0.02
25.010	trans-Pinocarveol	0.05
25.341	trans-Verbenol	0.02
25.681	cis-para-Mentha-1,5-dien-8-ol	0.04
27.136	trans-para-Mentha-1,5-dien-8-ol	0.08
27.748	Terpinen-4-ol	0.27
28.192	para-Cymen-8-ol	0.03
28.755	alpha-Terpineol	0.26
28.966	Estragole	0.05
29.291	alpha-Phellandrene epoxide	0.04
29.542	Verbenone	0.04
29.829	Octyl acetate	4.63
30.385	trans-Carveol	0.03
31.284	cis-Carveol	0.01
32.074	Carvone	0.02
32.404	Carvotanacetone	0.04
34.789	Bornyl acetate	0.08
35.746	Carvacrol	0.02
38.172	delta-Elementene	0.01
38.951	alpha-Cubebene	0.09
40.818	alpha-Copaene	0.38
41.334	beta-Bourbonene	0.04
41.720	beta-Elementene	0.28
42.832	beta-Maaliene	0.02
43.632	beta-Caryophyllene	5.06
44.260	beta-Copaene	0.02
44.482	trans-alpha-Bergamotene	0.16

Chromatogram Frankincense Carterii - Edens Garden



Comments:

The analysis of this Frankincense carterii batch sample meets the expected chemical profile for authentic essential oil of Boswellia carterii.

No contamination or adulteration was detected. The results provided in this GCMS quality analysis reflect the chemical composition of the oil and lot referenced above on the date of analysis.

©Copyright 2022 by Essential Oil University. All rights reserved. Any publishing, copying, use, dissemination, or distribution of this report, including online, without the express written permission of Essential Oil University is strictly prohibited.

R.Time	Name	Area%
45.471	Cadina-3,5-diene	0.03
45.865	alpha-Humulene	0.39
46.139	Alloaromadendrene	0.06
46.905	Cadina-1(6),4-diene	0.07
47.088	gamma-Murolene	0.14
47.459	Germacrene D	0.14
47.835	delta-Selinene	0.03
47.951	beta-Selinene	0.15
48.113	trans-Muurolo-4(14),5-diene	0.06
48.385	alpha-Selinene	0.14
48.556	alpha-Murolene	0.08
49.135	beta-Bisabolene	0.05
49.431	gamma-Cadinene	0.16
49.742	delta-Cadinene	0.44
49.938	trans-Calamenene	0.03
50.588	Cadina-1,4-diene	0.02
50.841	alpha-Cadinene	0.02
51.094	alpha-Calacorene	0.02
52.303	Unidentified	0.02
53.193	Spathulenol	0.01
53.498	Caryophyllene oxide	0.15
54.230	Viridiflorol	0.04
55.093	Copaborneol	0.04
55.366	10-epi-gamma-Eudesmol	0.03
55.470	1-10-di-epi-Cubenol	0.02
56.164	Epicubenol	0.03
56.974	epi-alpha-Cadinol	0.20
57.095	epi-alpha-Muurolol	0.02
57.228	alpha-Muurolol	0.03
57.727	Cadin-4-en-10-ol	0.06
65.260	Phellandrene Dimer	0.03
73.019	Myrcene Dimer I	0.03
73.277	Neocembrene	0.05
81.770	Cembrenol	0.04
82.248	Incensole	0.24
82.352	Serratol	0.35
83.107	Incensole acetate	0.06
		100.00