

Sample Information

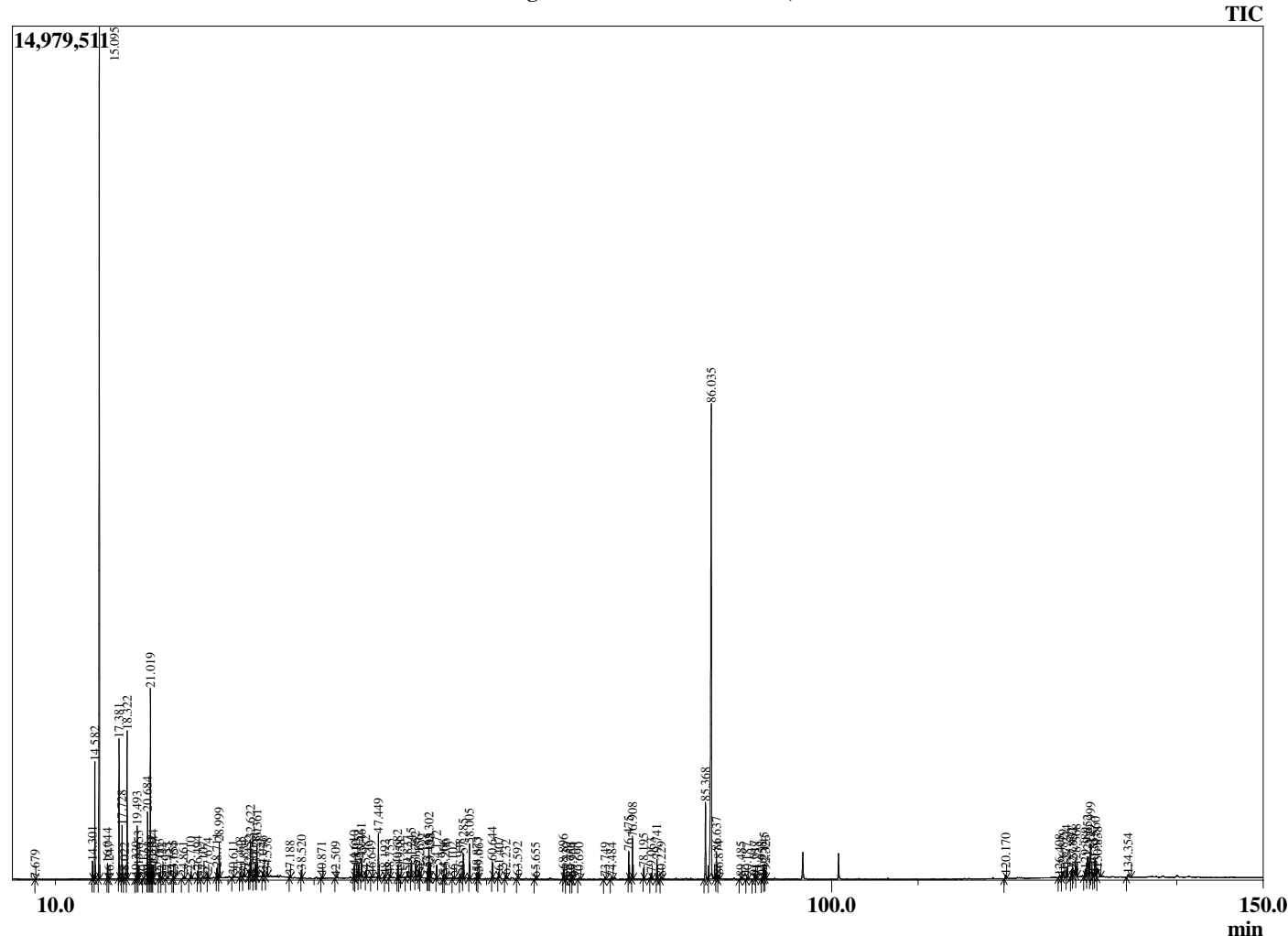
Analyzed by : Dr. Robert S. Pappas  
 Analyzed : 7/15/2020 5:54:51 PM  
 Sample Type : Essential Oil  
 Sample Name : Frankincense - carterii, CO2  
 Sample ID : BA08GAD  
 Injection Volume : 0.10  
 Instrument ID : GC-2



Peak Report TIC

R.Time	Name	Area%
7.679	Toluene	0.01
14.301	Hashishene	0.39
14.582	alpha-Thujene	2.70
15.095	alpha-Pinene	23.88
16.044	Camphene	0.34
16.247	Thuja-2,4(10)diene	0.03
17.381	Sabinene	3.30
17.728	beta-Pinene	1.29
18.022	Unidentified	0.05
18.322	Myrcene	3.55
19.339	Pseudolimonene	0.06
19.493	alpha-Phellandrene	1.32
19.653	3-Carene	0.30
20.177	alpha-Terpinene	0.02
20.684	para-Cymene	1.71
20.823	Thujol isomer	0.04
21.019	Limonene	5.05
21.132	beta-Phellandrene	0.21
21.219	1,8-Cineole	0.14
21.344	(Z)-beta-Ocimene	0.34
22.063	(E)-beta-Ocimene	0.13
22.322	Unidentified	0.04
22.933	gamma-Terpinene	0.05
23.655	1-Octanol	0.09
23.754	trans-Sabinene hydrate	0.05
24.861	Unidentified	0.09
25.710	Linalool	0.23
26.494	Thujol	0.17
27.107	Myrcenol	0.12
27.674	alpha-Campholenal	0.14
28.711	trans-Pinocarveol	0.31
28.999	trans-Verbenol	0.97
30.611	Unidentified	0.07
31.448	Terpinen-4-ol	0.16
31.834	para-Cymen-8-ol	0.07
32.452	alpha-Terpineol	0.28
32.622	Estragole	1.03
33.005	alpha-Phellandrene epoxide	0.07
33.280	Verbenone	0.30
33.361	Octyl acetate	0.89
34.046	trans-Carveol	0.16
34.538	1-Methoxydecane	0.10
37.188	3,5-Dimethoxytoluene	0.08
38.520	Bornyl acetate	0.21
40.871	Unidentified	0.06
42.509	Citriodiol	0.05
44.610	alpha-Copaene	0.36
44.812	Unidentified	0.11
45.152	beta-Bourbonene	0.35
45.461	beta-Elemene	0.49
45.982	Methyleugenol	0.17
46.649	alpha-Gurjunene	0.07
47.449	trans-beta-Caryophyllene	1.33
48.192	trans-alpha-Bergamotene	0.08
48.753	6,9-Guaiadiene	0.12
49.682	alpha-Humulene	0.37
49.958	Alloaromadendrene	0.14
50.827	trans-Cadina-1(6),4-diene	0.24
51.245	Germacrene D	0.40
51.752	beta-Selinene	0.30
52.156	alpha-Selinene	0.21
52.267	alpha-Muurolene	0.12

Chromatogram Frankincense - carterii, CO2



Comments:

The analysis of this Frankincense - carterii, CO2 batch sample meets the expected chemical profile for authentic CO2 extract of *Boswellia carterii*. No contamination or adulteration was detected.

The results provided in this GCMS quality analysis reflect the chemical composition of the oil and lot referenced above on the date of analysis.

R.Time	Name	Area%
53.165	gamma-Cadinene	0.26
53.302	Cubedol	0.97
53.438	delta-Cadinene	0.26
54.172	Unidentified	0.38
54.966	Elemicin	0.13
55.206	Elemol	0.15
56.102	Unidentified	0.08
56.938	Spathulenol	0.15
57.285	Caryophyllene oxide	0.78
58.005	Viridiflorol	1.12
58.873	Humulene epoxide II	0.22
59.067	10-epi-gamma-Eudesmol	0.20
60.644	alpha-Muurolol	0.47
61.407	alpha-Eudesmol	0.18
62.232	Unidentified	0.19
63.592	Unidentified	0.08
65.655	Unidentified	0.07
68.896	alpha-Phellandrene dimer	0.28
69.230	Unidentified	0.06
69.756	Unidentified	0.07
69.964	Hexadecanal	0.08
70.690	Unidentified	0.04
73.749	Unidentified	0.07
74.484	Unidentified	0.08
76.475	Myrcene dimer I	0.88
76.908	beta-Elementene dimer	1.35
78.195	Myrcene dimer II	0.31
79.063	delta-Elementene dimer	0.23
79.741	Verticilla-4(20),7,11-triene	0.64
80.229	Verticellol	0.12
85.368	Incensole	2.82
86.035	Serratol	22.63
86.637	Unidentified	0.93
86.874	Unidentified	0.14
89.485	Unidentified	0.10
90.187	Unidentified	0.08
91.017	Unidentified	0.18
91.258	Unidentified	0.11
91.958	Unidentified	0.13
92.145	Unidentified	0.32
92.323	Unidentified	0.23
120.170	Unidentified	0.16
126.408	Unidentified	0.13
126.829	Lanosta-8,24-dien-3-one	0.29
127.244	Unidentified	0.36
127.832	Lanosterol	0.41
127.991	Olean-12-en-3-one	0.34
128.368	beta-Amyrin	0.36
129.389	Unidentified	0.39
129.652	Urs-12-en-3-one	0.98
129.999	alpha-Amyrin	1.65
130.355	Unidentified	0.11
130.560	alpha-Amyrenyl acetate	0.74
130.838	Unidentified	0.78
134.354	Unidentified	0.21
		100.00