

Sample Information

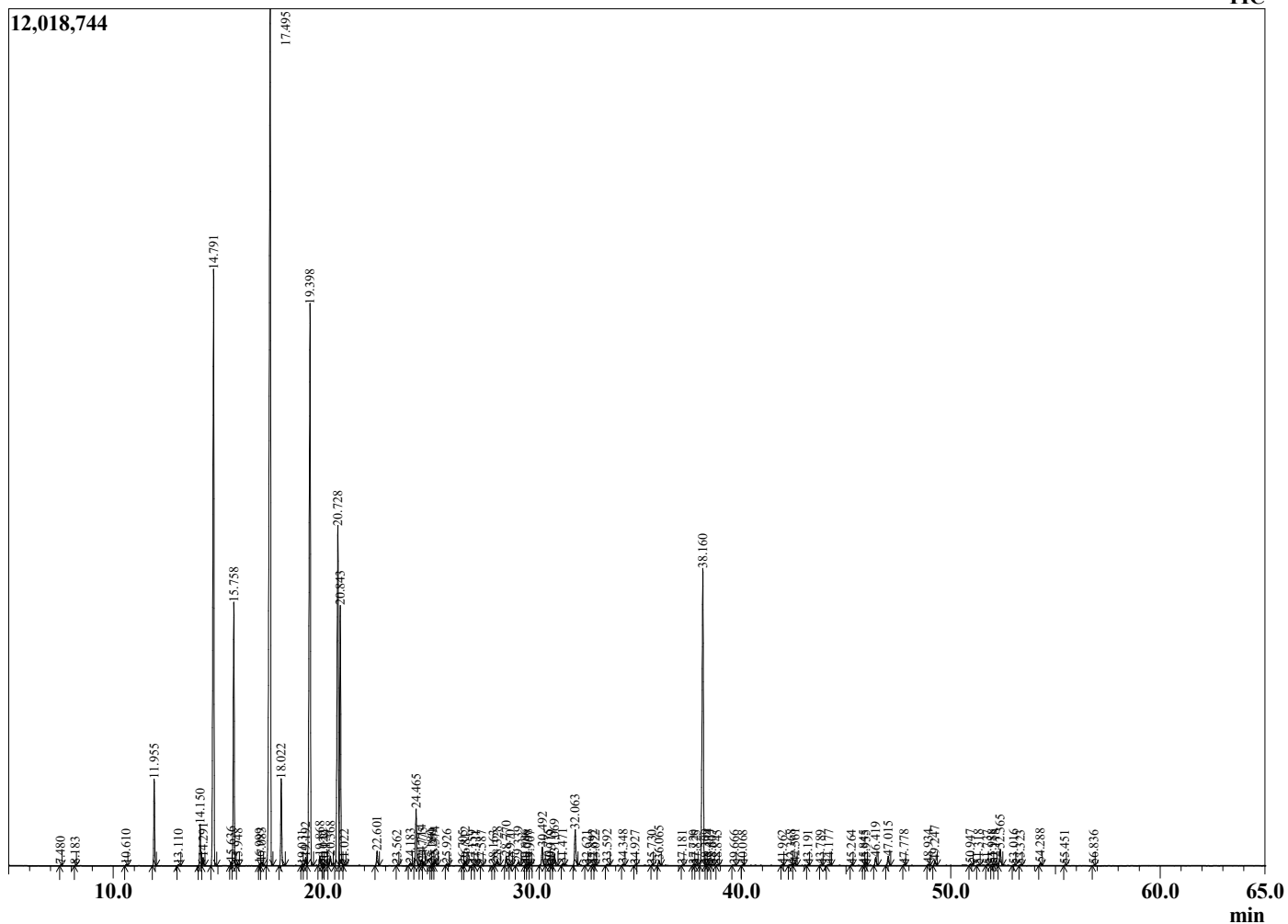
Analyzed by : Dr. Robert S. Pappas
 Analyzed : 3/6/2021 10:11:06 AM
 Sample Type : Essential Oil
 Sample Name : Fir Balsam - Edens Garden
 Sample ID : BB22AK
 Injection Volume : 0.10
 Instrument ID : GC-3



Peak Report TIC

R.Time	Name	Area%
7.480	Toluene	0.01
8.183	Hexyl methyl ether	0.01
10.610	Hex-3(Z)-enol	0.02
11.955	Santene	1.60
13.110	Unidentified	0.03
14.150	Tricyclene	0.85
14.291	alpha-Thujene	0.18
14.791	alpha-Pinene	14.33
15.636	alpha-Fenchene	0.08
15.758	Camphene	5.73
15.948	Thuja-2,4(10)diene	0.04
16.999	Unidentified	0.04
17.083	Sabinene	0.09
17.495	beta-Pinene	26.75
18.022	Myrcene	1.87
19.031	Pseudolimonene	0.02
19.192	alpha-Phellandrene	0.23
19.398	delta-3-Carene	16.02
19.868	alpha-Terpinene	0.21
20.022	ortho-Cymene	0.01
20.139	Unidentified	0.02
20.368	para-Cymene	0.25
20.728	Limonene	10.03
20.843	beta-Phellandrene	5.87
21.022	Unidentified	0.02
22.601	gamma-Terpinene	0.35
23.562	Pinol	0.01
24.183	Isoterpinolene	0.06
24.465	Terpinolene	1.38
24.714	Fenchone	0.15
24.775	para-Cymenene	0.07
25.180	Unidentified	0.01
25.269	alpha-Campholenal isomer	0.05
25.374	Linalool	0.11
25.926	alpha-Thujone	0.04
26.705	beta-Thujone	0.01
26.812	alpha-Fenchol	0.11
27.159	cis-para-Menth-2-en-1-ol	0.01
27.311	alpha-Campholenal	0.02
27.587	Unidentified	0.01
28.163	Nopinone	0.01
28.328	trans-Pinocarveol	0.13
28.770	Camphor	0.25
28.970	para-Mentha-1,5-dien-8-ol	0.02
29.339	trans-beta-Terpineol	0.11
29.686	Pinocamphone	0.02
29.798	Unidentified	0.03
29.907	Isoborneol	0.01
30.492	Borneol	0.51
30.775	Isopinocampnone	0.04
30.919	Unidentified	0.01
31.069	Terpinen-4-ol	0.31
31.471	Cryptone	0.05
32.063	alpha-Terpineol	1.02
32.621	Unidentified	0.02
32.892	Verbenone	0.02
33.022	Unidentified	0.02
33.592	alpha-Fenchyl acetate	0.04
34.348	Thymol methyl ether	0.04
34.927	Unidentified	0.01
35.730	3-Methylbutyl hexanoate	0.01
36.065	Piperitone	0.14

Chromatogram Fir Balsam - Edens Garden



Comments:

The analysis of this Fir Balsam batch sample meets the expected chemical profile for authentic essential oil of *Abies balsamea*. No contamination or adulteration was detected. The results provided in this GCMS quality analysis reflect the chemical composition of the oil and lot referenced above on the date of analysis.

R.Time	Name	Area%
37.181	Unidentified	0.01
37.720	Phellandral	0.02
37.825	Unidentified	0.02
38.160	Bornyl acetate	8.62
38.309	Isobornyl acetate	0.03
38.434	Thymol	0.04
38.607	2-Undecanone	0.02
38.845	Unidentified	0.01
39.666	Unidentified	0.02
40.068	Unidentified	0.01
41.962	Unidentified	0.02
42.368	Hexyl hexanoate	0.05
42.561	alpha-Longipinene	0.08
43.191	Unidentified	0.01
43.789	alpha-Ylangene	0.01
44.177	Unidentified	0.04
45.264	Sativene	0.02
45.845	Unidentified	0.01
45.955	Unidentified	0.01
46.419	Junipene	0.24
47.015	beta-Caryophyllene	0.27
47.778	trans-alpha-Bergamotene	0.03
48.934	trans-beta-Farnesene	0.03
49.247	alpha-Humulene	0.13
50.947	Unidentified	0.04
51.318	beta-Selinene	0.02
51.737	alpha-Selinene	0.01
51.988	Unidentified	0.03
52.118	Unidentified	0.03
52.365	beta-Bisabolene	0.45
53.016	delta-Cadinene	0.02
53.323	Unidentified	0.02
54.288	trans-alpha-Bisabolene	0.07
55.451	trans-Nerolidol	0.01
56.836	Caryophyllene oxide	0.01
		100.00